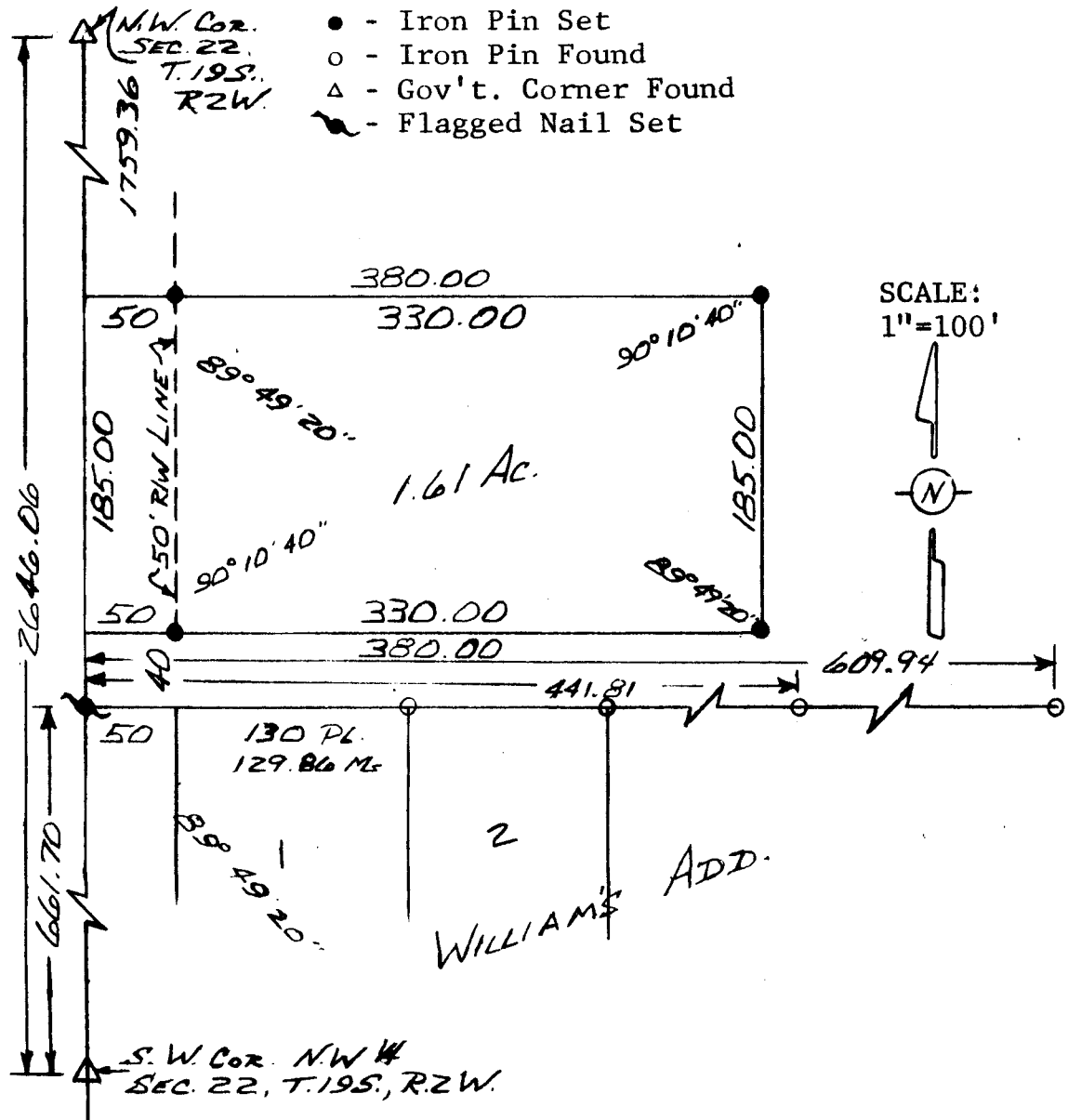


Survey for: May Anderson Estate
By: Garber Surveying Service, P.A.
217 East First Ave, Suite 9
Hutchinson, Kansas 67501

DESCRIPTION: A tract in the N.W. $\frac{1}{4}$ of Section 22, T.19S., R.2W
of the 6th P.M. McPherson County, Kansas as more particularly
described on the attached sheet.



I hereby certify this plat to be a true, complete
and correct representation of the property described
above and on the attached sheet, as surveyed by me,
this 18th day of December, 1980.

Daniel E. Garber
Daniel E. Garber, RLS

