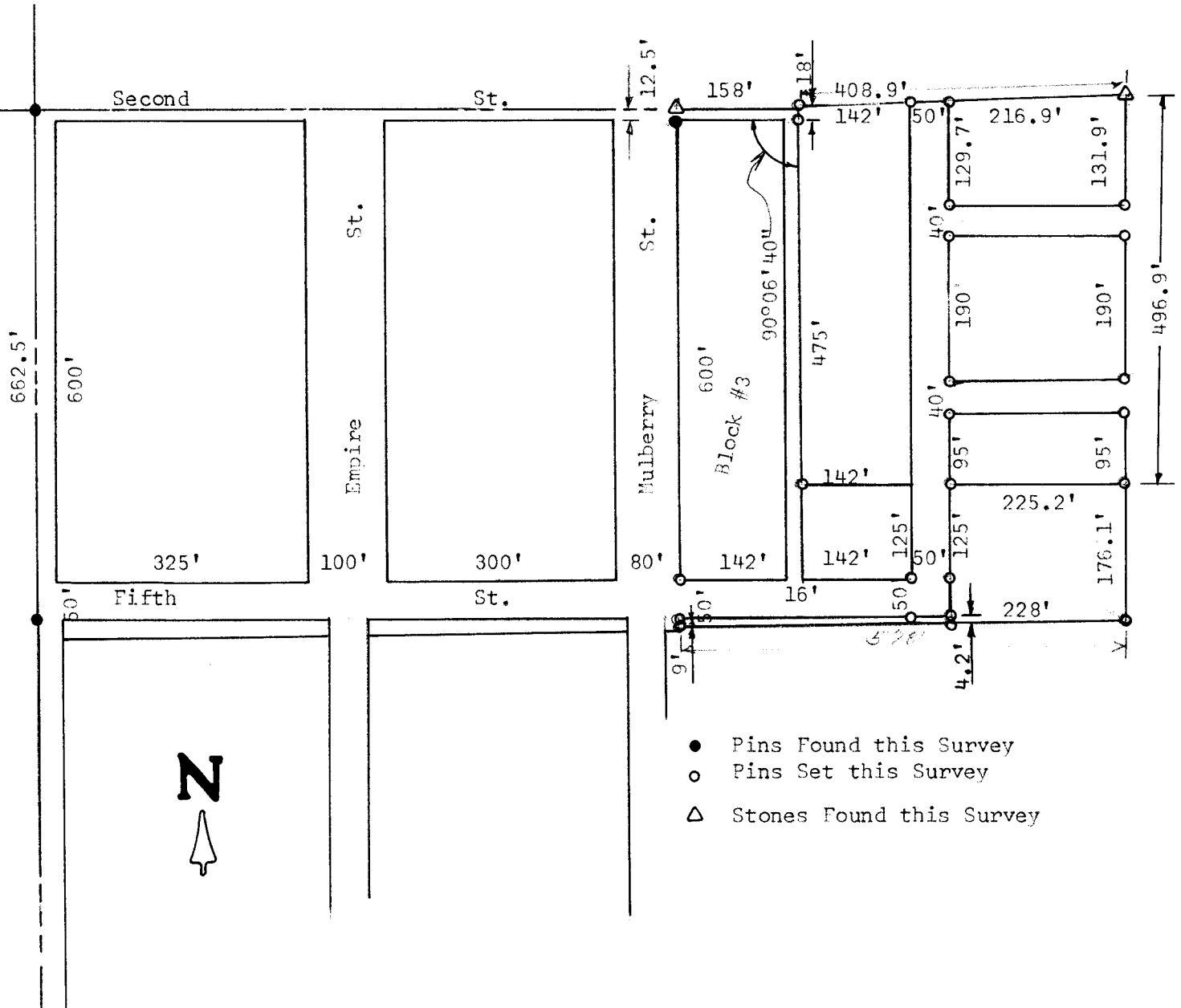


A TRACT OF LAND IN THE SW 1/4
SECTION 22, T19S, R2W
GALVA, KANSAS



State of Kansas)
County of McPherson) SS

I, F. R. Rankin, County Engineer of McPherson County, do hereby certify that under my supervision a survey was made of a tract of land in the SW 1/4 Section 22, T19S, R2W of the 6th P.M. and described as follows: Commencing at the NW corner of Block 3, Stout's Addition to the City of Galva, Kansas; thence East along the North side of said Block 3, 158 feet to a place of beginning; thence South parallel with Mulberry St. 475 feet; thence East parallel with Second St. 417.2 feet; thence North 496.9 feet to a stone; thence West 408.9 feet; thence South 18 feet to the place of beginning. The land herein described contains 4.69 acres more or less and the above plat is a true exhibit of said survey as far as it is known to me.

Survey called for by Raymond Unruh

Signed this 10 day of April, 1970

F. R. Rankin
County Engineer
McPherson, Kansas



MICROFILM