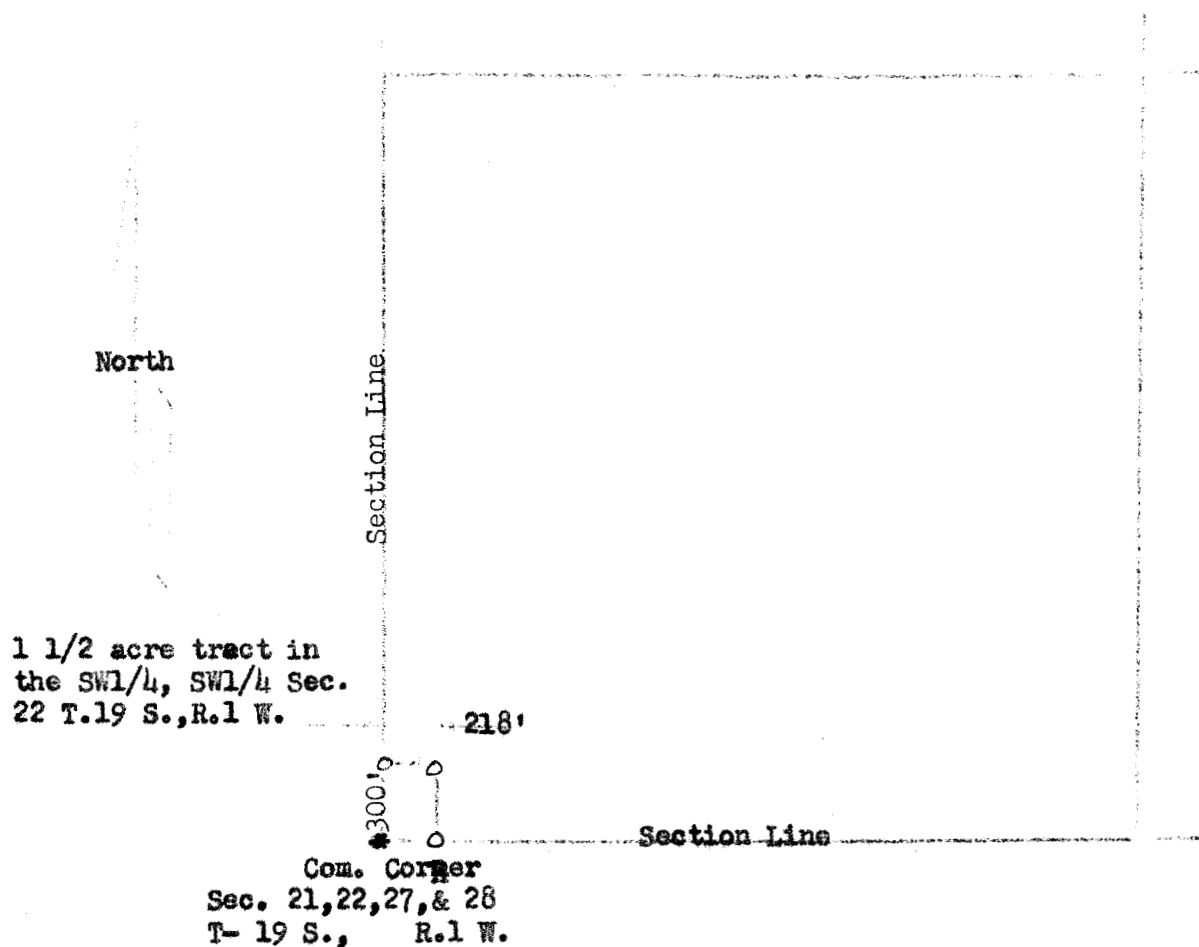


31st October, 1952



State of Kansas, County of McPherson ss

I, Francis D. Wagner, County Engineer of McPherson County, Kansas did on the 31st day of October, 1952 a survey that determined the corners of a tract of land in the Southwest Quarter, Southwest Quarter, Section 22, T. 19 S., R. 1 W., of the Sixth Principal Meridian described as follows; Beginning at the Common Corner of Sections 21, 22, 27 and 28, T19 S., R 1 W., thence North on Section Line 300 feet, thence East Parrallel to Section Line between 22 and 27, 218 feet, thence South Parrallel to Section Line between 21 and 22, 300 feet thence West on Section Line Between 22 and 27, 218 feet to the place of beginning and that the accompanying plat is a true exhibit of said survey.

Francis D. Wagner
FRANCIS D. WAGNER
County Engineer
McPherson County

MICROFILM