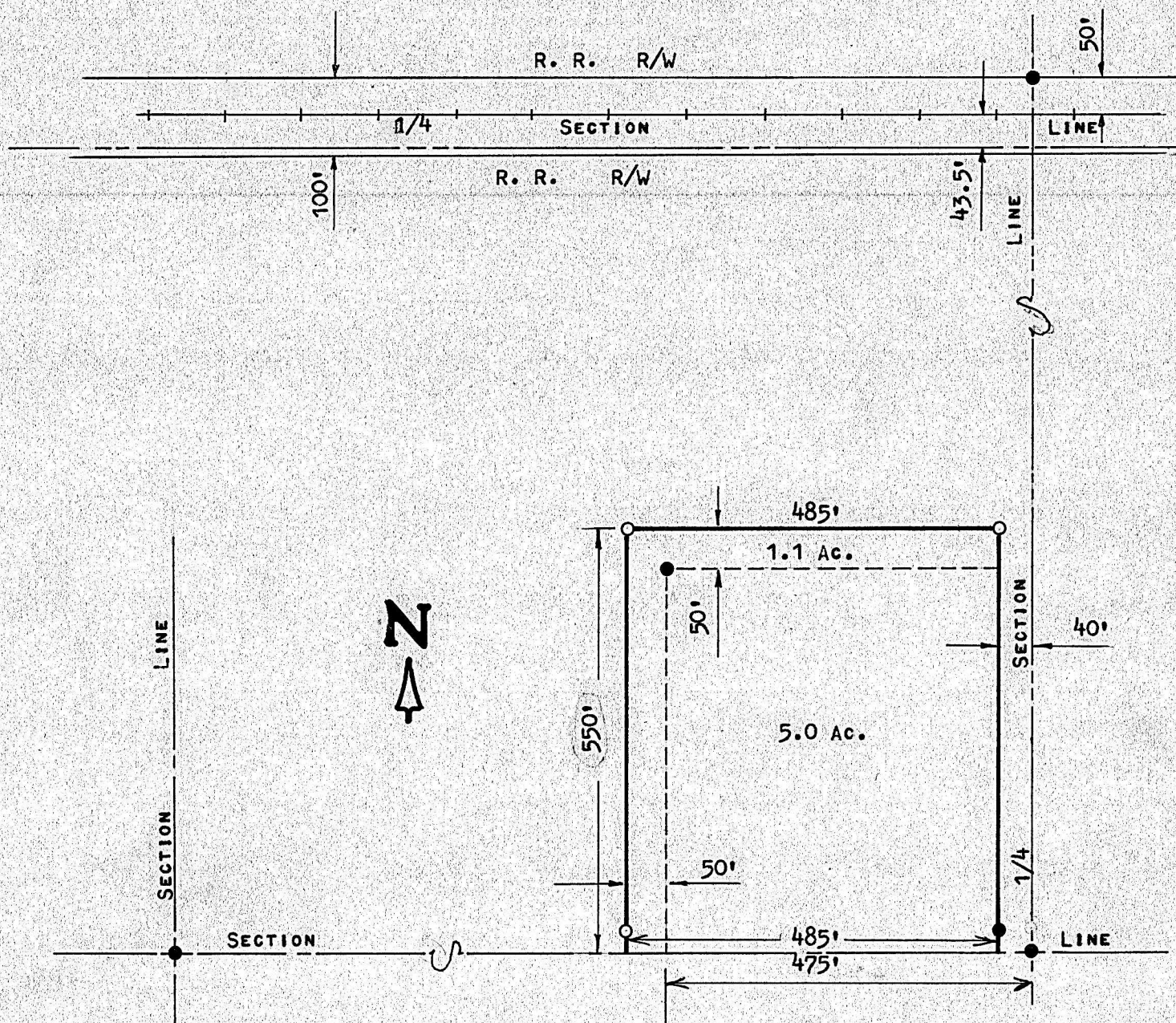


A TRACT IN THE SW 1/4
OF SECTION 22, T19S, R1W
MC PHERSON COUNTY, KANSAS



- PINS FOUND THIS SURVEY
- PINS SET THIS SURVEY

STATE OF KANSAS)
COUNTY OF MCPHERSON) SS
I, MELVIN FERGUSON, COUNTY ENGINEER OF MCPHERSON COUNTY, KANSAS,
DO HEREBY CERTIFY THAT UNDER MY SUPERVISION A SURVEY WAS MADE IN
THE SW 1/4 OF SECTION 22, T19S, R1W OF THE 6TH P.M. AND DESCRIBED
AS FOLLOWS:

BEGINNING ON THE SECTION LINE 475 FEET WEST OF THE SOUTHEAST COR-
NER OF THE SW 1/4 OF SECTION 22, T19S, R1W; THENCE NORTH, PARALLEL
WITH THE 1/4 SECTION LINE, 500 FEET; THENCE EAST, PARALLEL WITH THE
SECTION LINE, 435 FEET; THENCE NORTH 50 FEET; THENCE WEST, PARALLEL
WITH THE SECTION LINE, 485 FEET; THENCE SOUTH PARALLEL WITH THE
1/4 SECTION LINE, 550 FEET; THENCE EAST 50 FEET TO THE PLACE OF
BEGINNING.

SAID TRACT CONTAINS 1.1 ACRES MORE OR LESS AND THE ABOVE PLAT IS
A TRUE EXHIBIT OF SAID SURVEY AS FAR AS IT IS KNOWN TO ME.

SURVEY CALL FOR BY BERNIE RUNDSTROM

SIGNED THIS 20th DAY OF SEPTEMBER, 1974

Melvin Ferguson
MELVIN FERGUSON
COUNTY ENGINEER
MCPHERSON COUNTY, KANSAS
6772
KANSAS
PROFESSIONAL ENGINEER

MICROFILM