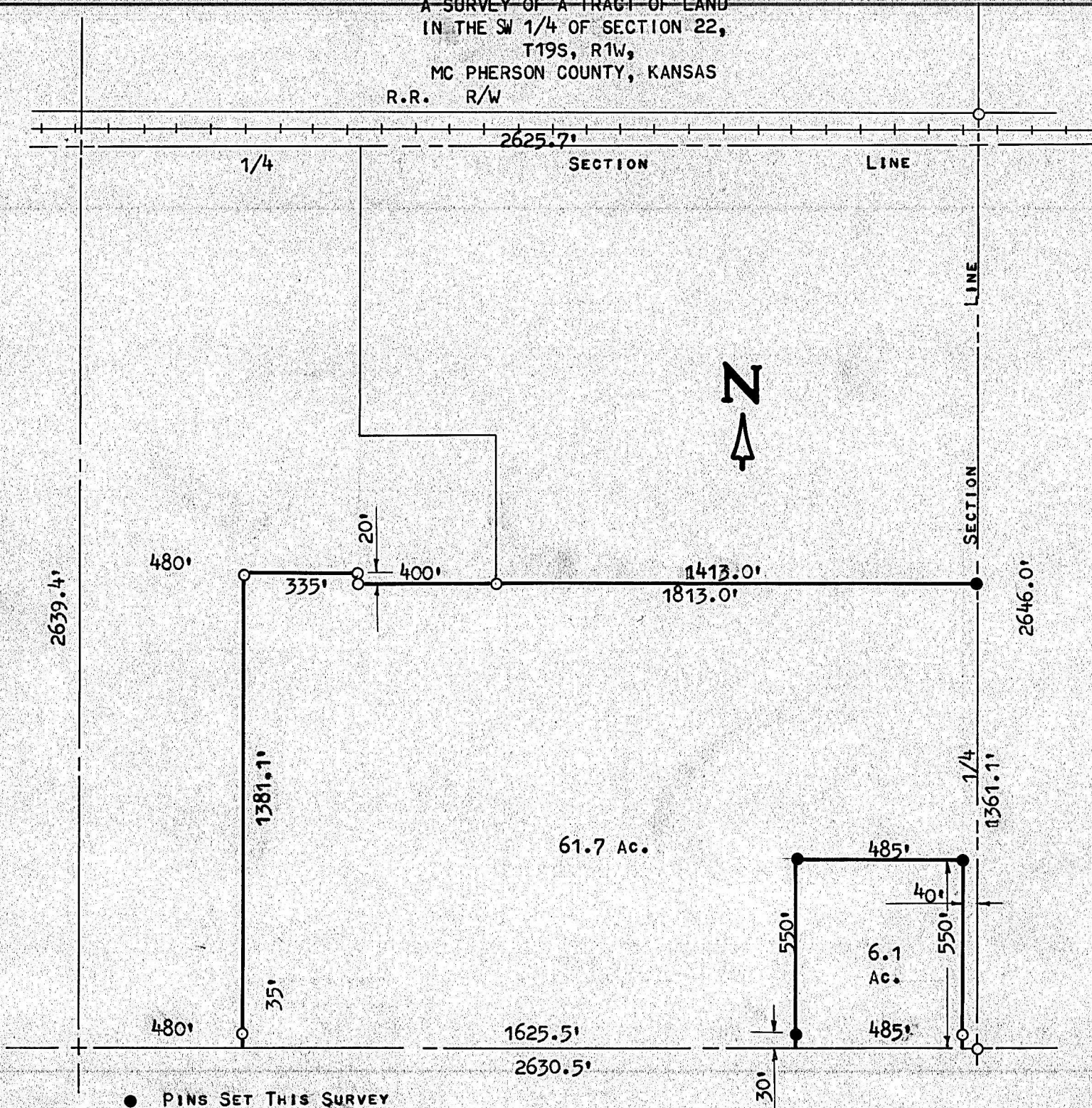


A SURVEY OF A TRACT OF LAND  
IN THE SW 1/4 OF SECTION 22,  
T19S, R1W,  
MC PHERSON COUNTY, KANSAS  
R.R. R/W



- PINS SET THIS SURVEY
- PINS FOUND THIS SURVEY

STATE OF KANSAS )  
COUNTY OF MCPHERSON ) SS

I, MELVIN FERGUSON, COUNTY ENGINEER OF MCPHERSON COUNTY, KANSAS DO HEREBY  
CERTIFY THAT UNDER MY SUPERVISION A SURVEY WAS MADE IN THE SW 1/4 OF  
SECTION 22, T19S, R1W OF THE 6TH P.M. AND DESCRIBED AS FOLLOWS:

BEGINNING AT THE SE CORNER OF THE SW 1/4 OF SECTION 22, T19S, R1W; THENCE  
NORTH, ON THE 1/4 SECTION LINE, 1361.1 FEET; THENCE WEST, PARALLEL WITH  
THE SOUTH SECTION LINE, 1813.0 FEET; THENCE NORTH 20 FEET; THENCE WEST  
335.0 FEET; THENCE SOUTH, PARALLEL WITH THE WEST SECTION LINE 1381.1 FEET;  
THENCE EAST, ON THE SECTION LINE, 1625.5 FEET; THENCE NORTH, PARALLEL WITH  
THE 1/4 SECTION LINE, 550 FEET; THENCE EAST 485 FEET TO A POINT 40 FEET  
WEST OF THE 1/4 SECTION LINE; THENCE SOUTH 550 FEET; THENCE EAST, ON SEC-  
TION LINE, 40 FEET TO THE PLACE OF BEGINNING. SAID TRACT CONTAINS 61.7  
ACRES MORE OR LESS AND THE ABOVE PLAT IS A TRUE EXHIBIT OF SAID SURVEY  
AS FAR AS IT IS KNOWN TO ME.

SURVEY CALLED FOR BY BERNIE RUNDSTROM  
SIGNED THIS 26<sup>th</sup> DAY OF SEPTEMBER, 1974

*Melvin Ferguson*  
MELVIN FERGUSON, P. E.  
COUNTY ENGINEER  
MCPHERSON COUNTY, KANSAS



MICROFILM