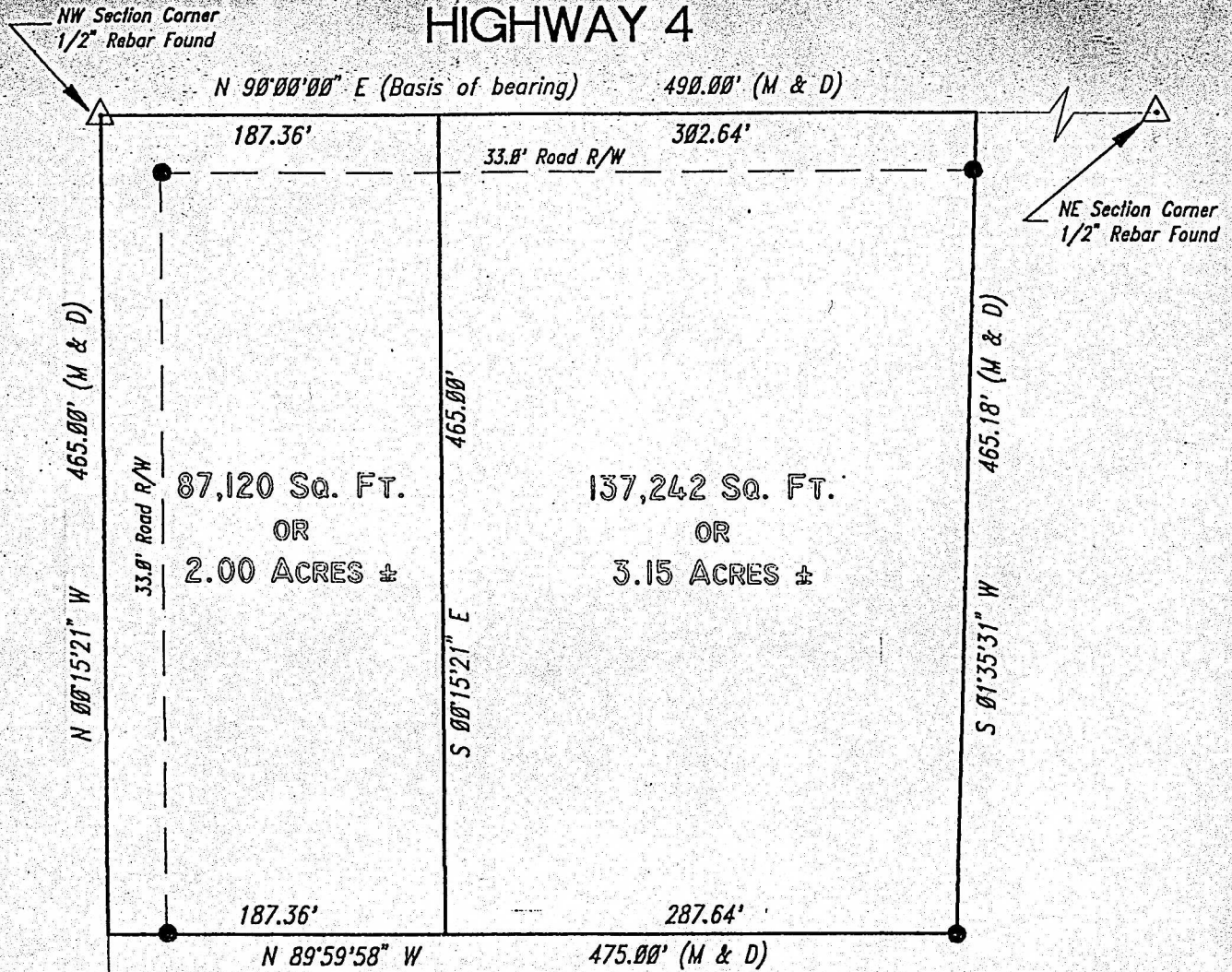


HIGHWAY 4



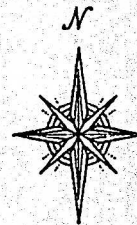
E/4 - Cap w/ KS Dept. of Land Management

NOTE: Pins Set at 33' Road Right of Way

LEGEND

1/2" Rebar Set This Survey
Section Corner Found This Survey
(M) Measured Distance
(D) Deeded Distance

POSSIBLE DIVISION
WITHOUT BUYING
ADDITIONAL LAND
FROM ADJACENT
LANDOWNER



Scale 1" = 100'

Section Corner Ties

NE Section Corner
52.43' SE to Spk & Washer in Tel Pole
36.3' SE to Marker
68.75' SE to Spk & Washer in Guide Post
26.4' S to line Power Pole West

NW Corner
45.4' SSW to Government Marker
44.6' SE to Government Marker
23.0' E to Line of Poles South
25.3' S to Line of Poles West

E/4 Corner
41.6' NW to Government Marker
39.1' NE to Government Marker
23.5' E to Line of Power Poles North
33.0' W to Line of Power Poles South

This plat is assumed in the NW 1/4 of Sec 22, 17-4

045-22