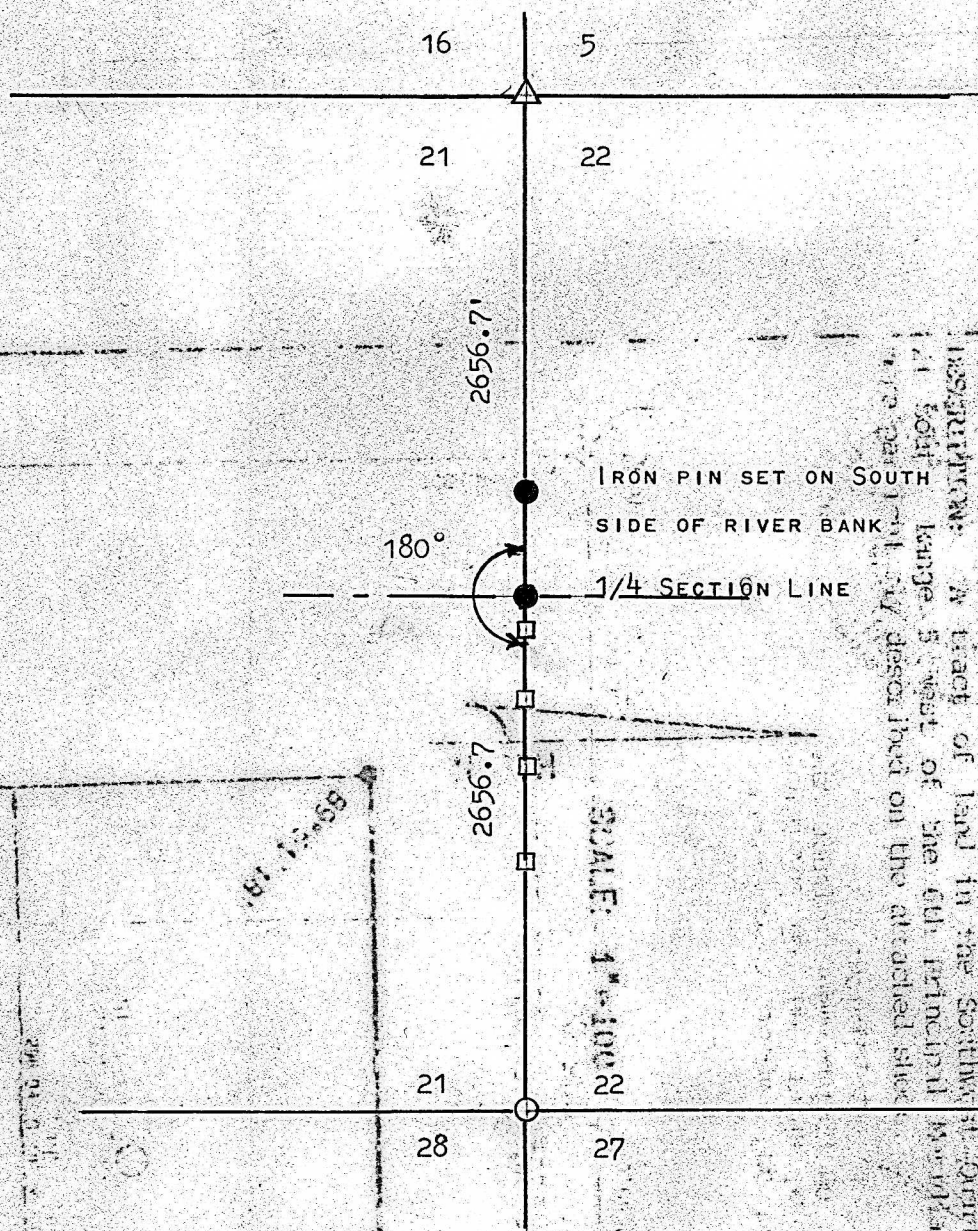


A SURVEY TO DETERMINE THE 1/4 CORNER
TO SECTIONS 21 & 22 T21S R5W
MCPHERSON, COUNTY
KANSAS



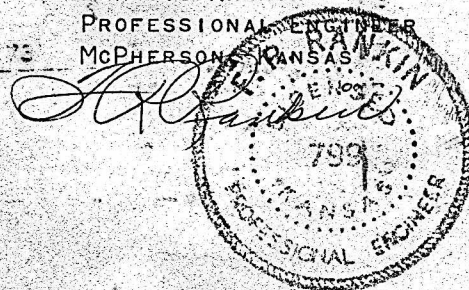
- △ STONE FOUND THIS SURVEY
- IRON PIN FOUND THIS SURVEY
- IRON PINS SET THIS SURVEY
- WOOD STAKES SET ON SECTION LINE

STATE OF KANSAS)
COUNTY OF MCPHERSON) SS

I, FRANCIS RANKIN, PROFESSIONAL ENGINEER OF THE STATE OF KANSAS DO HEREBY CERTIFY THAT UNDER MY SUPERVISION A SURVEY WAS MADE TO DETERMINE THE 1/4 CORNER BETWEEN SECTIONS 21 & 22 T21S R5W OF THE 6TH PM., AND THAT THE ACCOMPANYING PLAT IS A TRUE EXHIBIT OF SAID SURVEY AS FAR AS IT IS KNOWN TO ME.
SURVEY CALLED FOR BY MEMMO THIessen

SIGNED THIS 6 DAY OF FEBRUARY, 1967

FRANCIS RANKIN
PROFESSIONAL ENGINEER
MCPHERSON, KANSAS



217 East 1st, Suite 16 • Phone 316-655-7032 • FAX 316-661-7401
Hutchinson, Kansas 67501

Cable Surveying
Service, P.A.