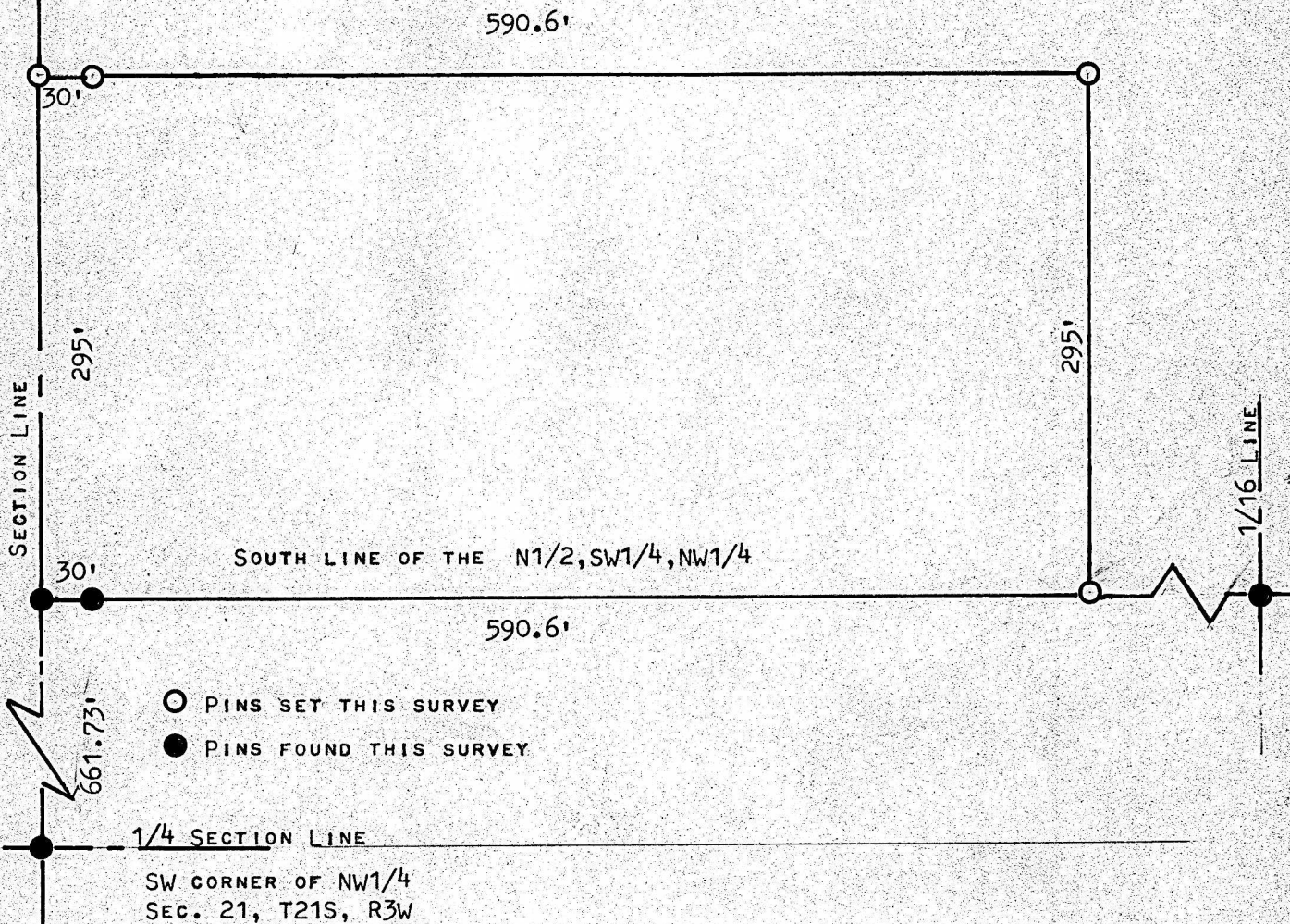


A SURVEY OF A TRACT OF LAND IN THE
NW1/4, SECTION 21, T21S, R3W
MCPHERSON COUNTY, KANSAS



STATE OF KANSAS)
COUNTY OF MCPHERSON) SS

I, MELVIN FERGUSON, PROFESSIONAL ENGINEER OF THE STATE OF KANSAS DO HEREBY CERTIFY THAT UNDER MY SUPERVISION A SURVEY WAS MADE OF A TRACT OF LAND IN THE NW1/4, SW1/4, NW1/4, SECTION 21, T21S, R3W OF THE 6TH P.M. AND DESCRIBED AS FOLLOWS:

BEGINNING AT THE SW CORNER OF THE N1/2, SW1/4, NW1/4, SAID POINT BEING 661.73 FEET NORTH OF THE SW CORNER OF THE NW1/4, OF SAID SECTION 21, T21S, R3W; THENCE EAST ON THE SOUTH LINE OF THE N1/2, SW1/4, NW1/4, A DISTANCE OF 590.6 FEET; THENCE NORTH PARALLEL WITH SECTION LINE 295 FEET; THENCE WEST TO SECTION LINE 590.6 FEET; THENCE SOUTH ON SECTION LINE 295 FEET AND TO PLACE OF BEGINNING SAID TRACT OF LAND CONTAINS 4.0 ACRES MORE OR LESS, AND THAT THE ACCOMPANYING PLAT IS A TRUE EXHIBIT OF SAID SURVEY AS FAR AS IT IS KNOWN TO ME.

SURVEY CALLED FOR BY TONY WEDEL (MCPHERSON REALTY)

SIGNED THIS 17th DAY OF JULY, 1978

Melvin Ferguson
MELVIN FERGUSON
PROFESSIONAL ENGINEER
MCPHERSON, KANSAS



MICROFILM