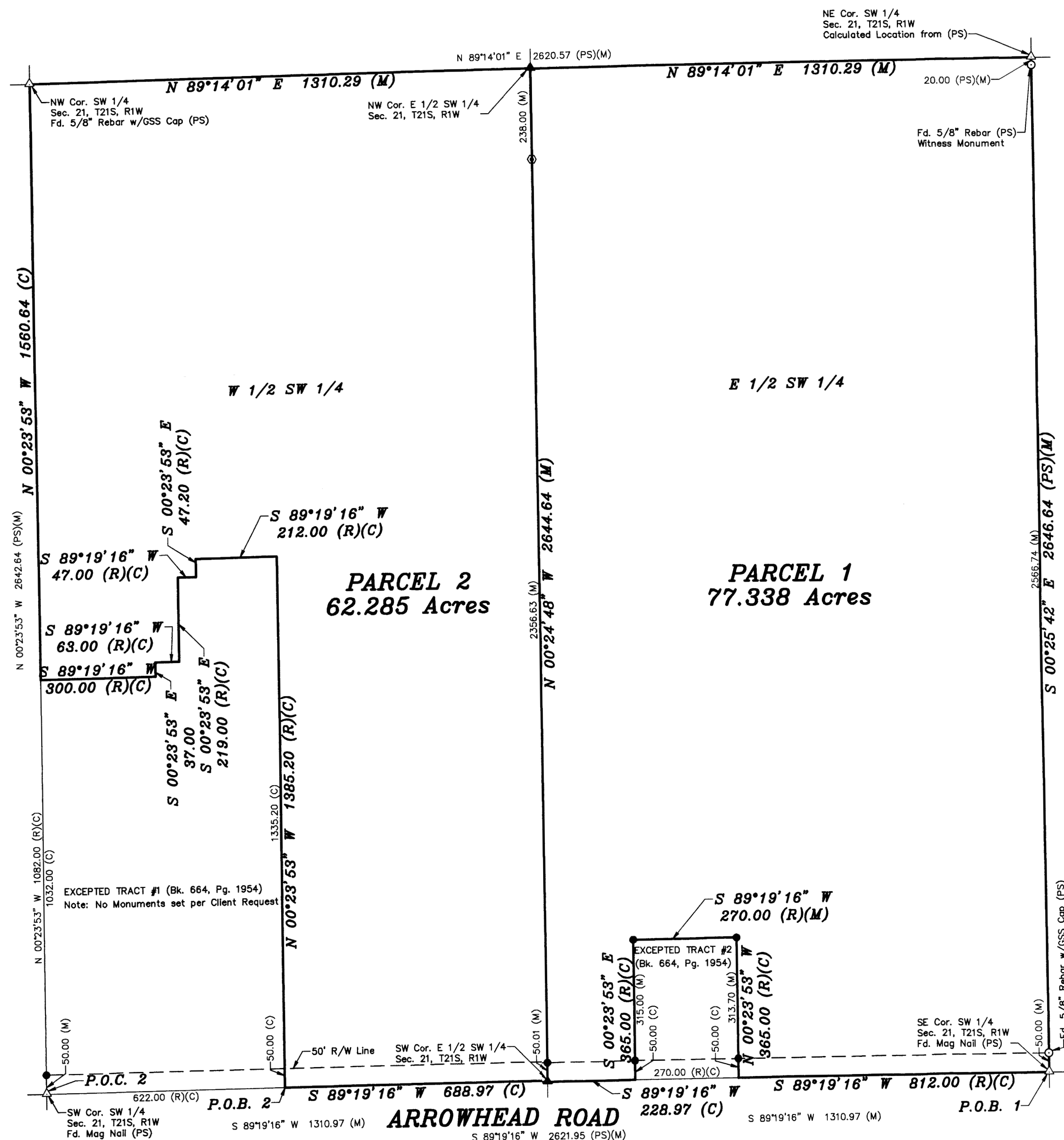
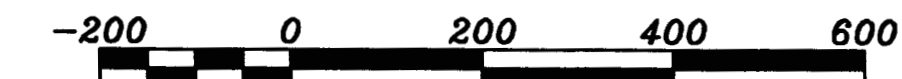


Saved 4/14/2017 12:46:33 PM by KLOUTZEN  
Plot Date & Time Friday, April 14, 2017 12:46:42 PM Dwg Path \\Fs2\company\LDG\GSSFILES\2017\20218.ctb\dwg\20170218 Auto S Ground



- LEGEND**
- △ - Sectional Monument Found
  - ▲ - Section Monument Set (5/8" x 24" Iron Rebar w/G.S.S. Cap)
  - - Survey Monument Found
  - - 5/8" x 24" Iron Rebar Set w/G.S.S. Cap
  - ⊙ - 5/8" x 24" Rebar Set w/GSS Blue Cap
  - (C) - Calculated
  - (M) - Measured
  - (PS) - Previous Survey GSS Proj #G2016-199
  - (R) - Record measurement
  - P.O.B. - Point of Beginning
  - P.O.C. - Point of Commencement



**DESCRIPTION:  
PARCEL 1**

A portion of the Southwest Quarter of Section 21, Township 21 South, Range 1 West of the 6th Principal Meridian, McPherson County, Kansas described as follows:

Beginning at the Southeast corner of said Southwest Quarter; thence on a NAD 83 Kansas South Zone bearing of South 89°19'16" West on the South line of said Southwest Quarter a distance of 812.00 feet (Record); thence North 00°23'53" West parallel with the West line of said Southwest Quarter a distance of 365.00 feet (Record); thence South 89°19'16" West parallel with said South line a distance of 270.00 feet (Record); thence South 00°23'53" East parallel with said West line a distance of 365.00 feet (Record) to said South line; thence South 89°19'16" West on said South line a distance of 228.97 feet to the Southwest corner of the East Half of said Southwest Quarter; thence North 00°24'48" West on the West line of said East Half a distance of 2644.64 feet to the Northwest Quarter of said East Half; thence North 89°14'01" East on the North line of said Southwest Quarter a distance of 1310.29 feet to the Northeast corner of said Southwest Quarter; thence South 00°25'42" East on the East line of said Southwest Quarter a distance of 2646.64 feet to the point of beginning.

Containing 77.338 Acres and subject to a road right of way easement across the South 50.00 feet thereof, and any other easements or restrictions of record.

**PARCEL 2**

A portion of the Southwest Quarter of Section 21, Township 21 South, Range 1 West of the 6th Principal Meridian, McPherson County, Kansas described as follows:

Commencing at the Southwest corner of said Southwest Quarter; thence on a NAD 83 Kansas South Zone bearing of North 89°19'16" East on the South line of said Southwest Quarter a distance of 622.00 feet (Record) to the point of beginning; thence North 00°23'53" West parallel with the West line of said Southwest a distance of 1385.20 feet (Record); thence South 89°19'16" West parallel with said South line a distance of 212.00 feet (Record); thence South 00°23'53" East parallel with said West line a distance of 47.20 feet; thence South 89°19'16" West parallel with said South line a distance of 47.00 feet (Record); thence South 00°23'53" East parallel with said West line a distance of 219.00 feet (Record); thence South 89°19'16" West parallel with said South line a distance of 63.00 feet (Record); thence South 00°23'53" East parallel with said West line a distance of 37.00 feet (Record); thence South 89°19'16" West parallel with said South line a distance of 300.00 feet (Record) to said West line; thence North 00°23'54" West on said West line a distance of 1560.64 feet to the Northwest corner of said Southwest Quarter; thence North 89°14'01" East on the North line of said Southwest Quarter a distance of 1310.29 feet to the Northeast corner of the West Half of said Southwest Quarter; thence South 00°24'48" East on the East line of said West Half 2644.64 feet to the Southeast corner of said West Half; thence South 89°19'16" West on said South line a distance of 688.97 feet to the point of beginning.

Containing 62.285 Acres and subject to a road right of way easement across the South 50.00 feet thereof, and any other easements or restrictions of record.

**SURVEYOR'S CERTIFICATE:**

I hereby certify this plat to be a true, correct and complete representation of the property described hereon, as surveyed under my supervision, this 14th day of April, 2017.



Prepared For: <b>GARY HUXMAN</b>		Description: <b>A PORTION OF THE SW 1/4 SECTION 21, T21S, R1W McPHERSON COUNTY, KANSAS</b>	
Prepared By: <b>GSS</b>		<b>Garber Surveying Service, P.A.</b>	
HUTCHINSON (Main Office) 2908 North Plum St. 67502 Ph. 620-665-7032 Fax 620-663-7401		McPHERSON (Branch Office) 115 East Marlin 67460 Ph. 620-241-4441 Fax 620-241-4458	
NEWTON (Branch Office) 511 North Poplar St. 67114 Ph. 316-283-5053 Fax 316-283-5073			
Drawn By: KLL	Scale: 1"=200'	Date of Field Work: April 6, 2017	Job No: G2017-218
Checked By: NDS	Date: 04/14/2017	Sheet 1 of 1 Sheet(s)	