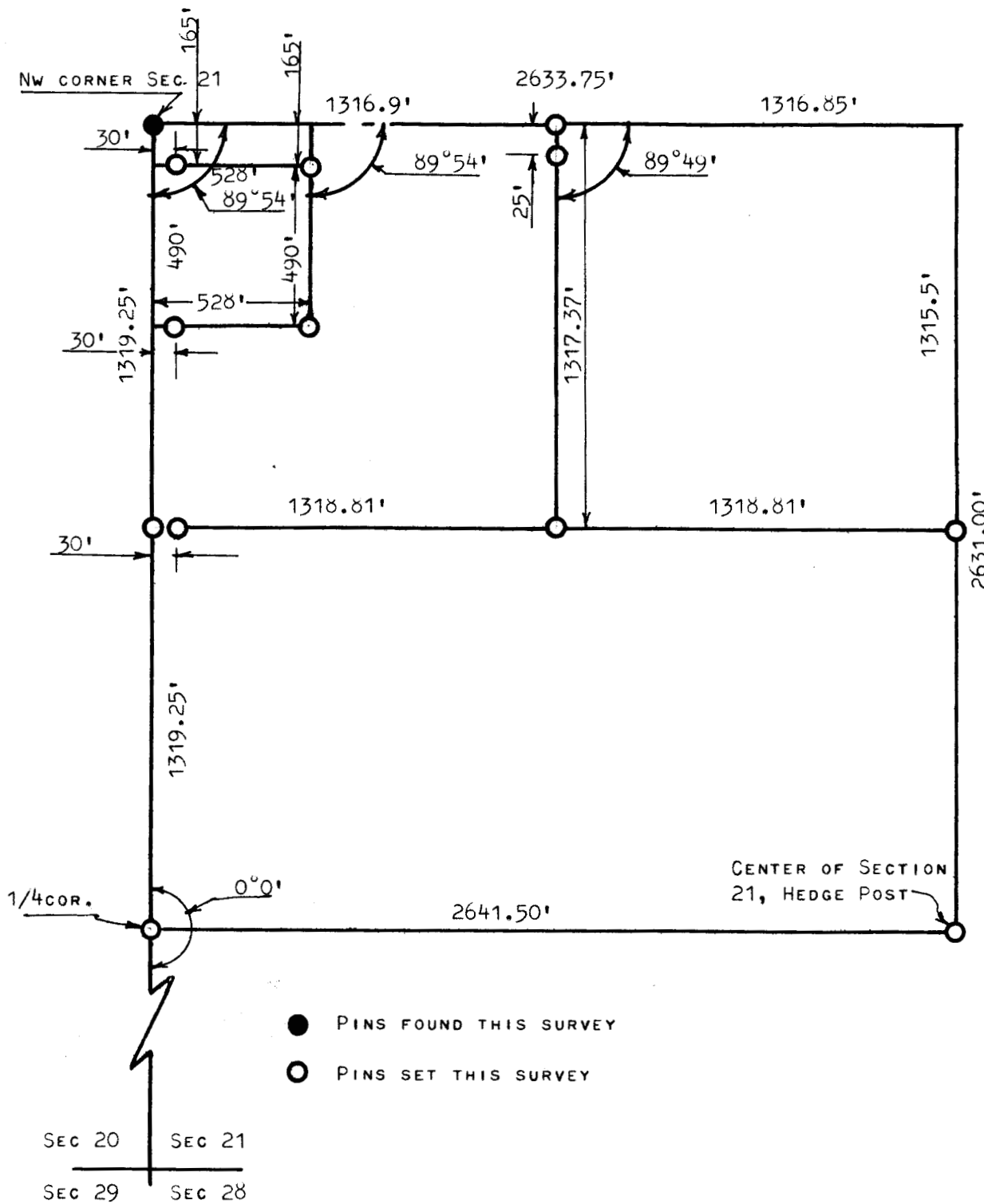


A SURVEY IN THE NW1/4
SECTION 21-T20S-R3W



STATE OF KANSAS)
COUNTY OF MCPHERSON) SS

I, FRANCIS R. RANKIN, PROFESSIONAL ENGINEER OF THE STATE OF KANSAS DO HERBY CERTIFY THAT UNDER MY SUPERVISION A SURVEY WAS MADE OF THE NORTH 1/2, NW1/4 SECTION 21 T20S R3W, OF THE 6TH P.M. AND ALSO A TRACT IN SAID 1/4 SECTION AND THAT THE ACCOMPANYING PLAT IS A TRUE EXHIBIT OF SAID SURVEY AS FAR AS IT IS KNOWN TO ME.

SURVEY CALLED FOR BY HOMER KAUFMAN

SIGNED THIS 2 DAY OF MAY, 1965

Francis R. Rankin
FRANCIS R. RANKIN
PROFESSIONAL ENGINEER
MCPHERSON, KANSAS

NOTE: SECTION CORNERS ESTABLISHED FROM EXISTING EVIDENCE FOUND IN THE FIELD SUCH AS HEDGES, FENCES & ETC.