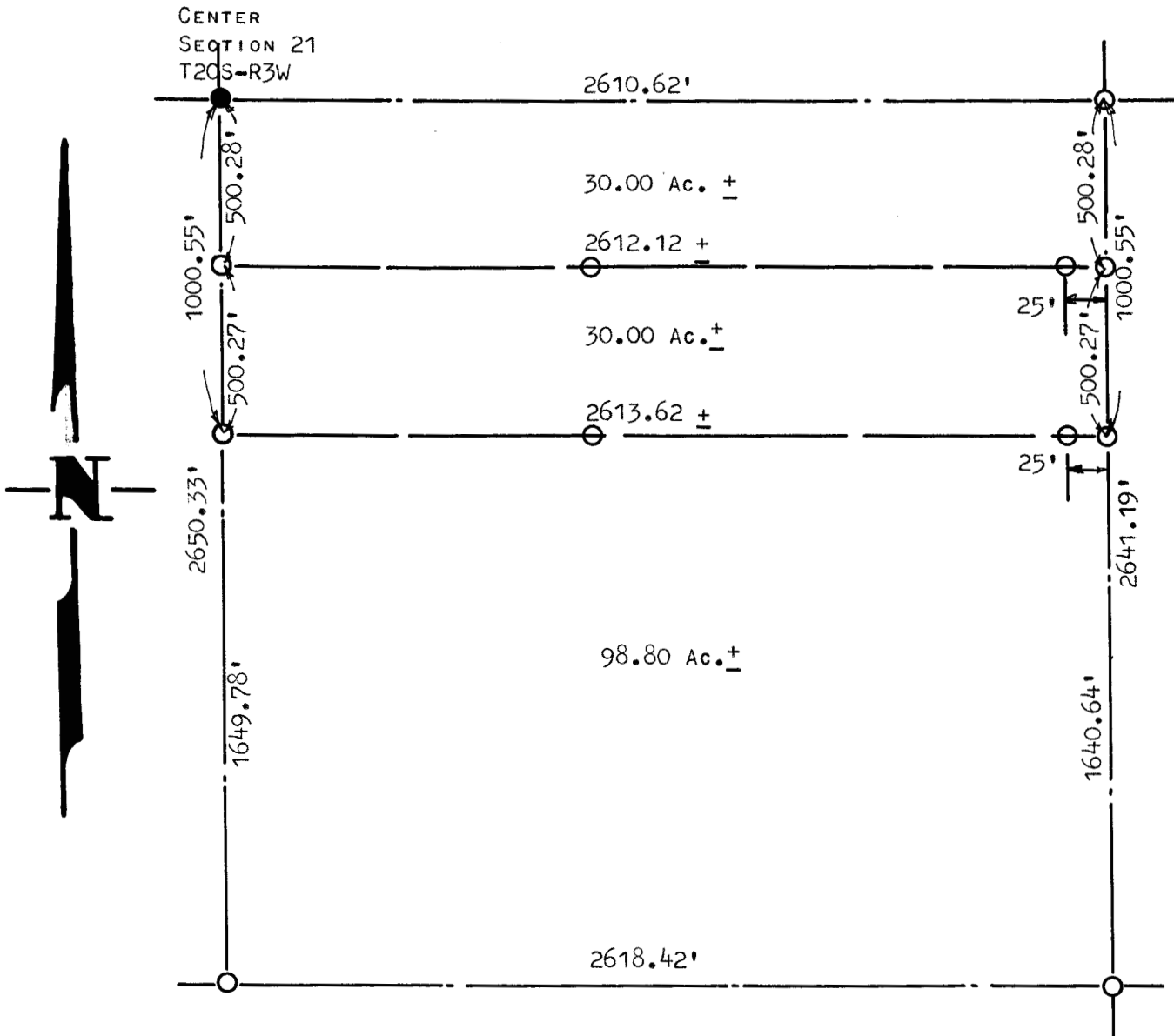


A SURVEY IN THE SE<sup>1</sup>/<sub>4</sub>  
SECTION 21-T20S-R3W



STATE OF KANSAS ) SS  
COUNTY OF McPHERSON)

I FRANCIS D. WAGNER, COUNTY ENGINEER OF McPHERSON COUNTY, KANSAS DO HEREBY CERTIFY THAT I DID CAUSE TO BE DONE ON THE 24TH DAY OF DECEMBER 1959, A SURVEY OF THE NORTH 60 ACRES SE<sup>1</sup>/<sub>4</sub> SECTION 21-T20S-R3W OF THE 6TH P.M. AND THAT THE ACCOMPANYING PLAT IS A TRUE EXHIBIT OF SAID SURVEY.

*Francis D. Wagner*

FRANCIS D. WAGNER  
COUNTY ENGINEER  
McPHERSON COUNTY

24 DECEMBER, 1959

NOTE: SECTION CORNERS ESTABLISHED FROM EXISTING EVIDENCE FOUND IN THE FIELD SUCH AS HEDGES, FENCES & ETC.