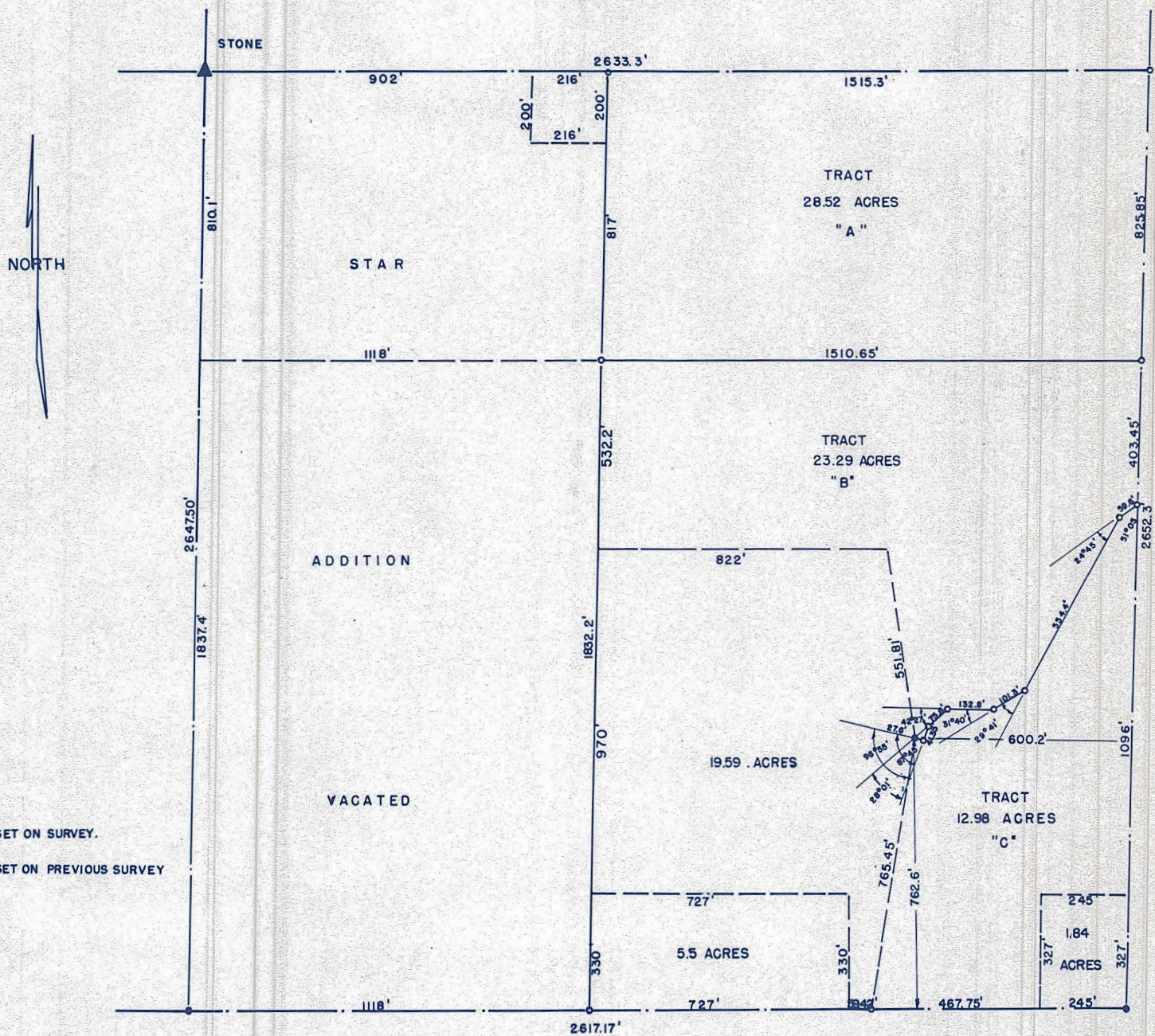


SURVEY IN THE S.E. 1/4
SECTION 21, T.19 S., R.3 W



STATE OF KANSAS
McPHERSON COUNTY, KANSAS, S.S.

I, FRANCIS D. WAGNER COUNTY ENGINEER OF MCPHERSON COUNTY KANSAS, DO HEREBY CERTIFY THAT I DID CAUSE TO BE DONE ON THE 2nd DAY OF JULY, 1954 A SURVEY IN THE S.E. 1/4 SECTION 21, T.19 S., R.3 W, AND THAT THE ACCOMPANYING PLAT IS A TRUE EXHIBIT OF SAID SURVEY.

Francis D. Wagner

FRANCIS D. WAGNER
COUNTY ENGINEER
MCPHERSON COUNTY

MICROFILM