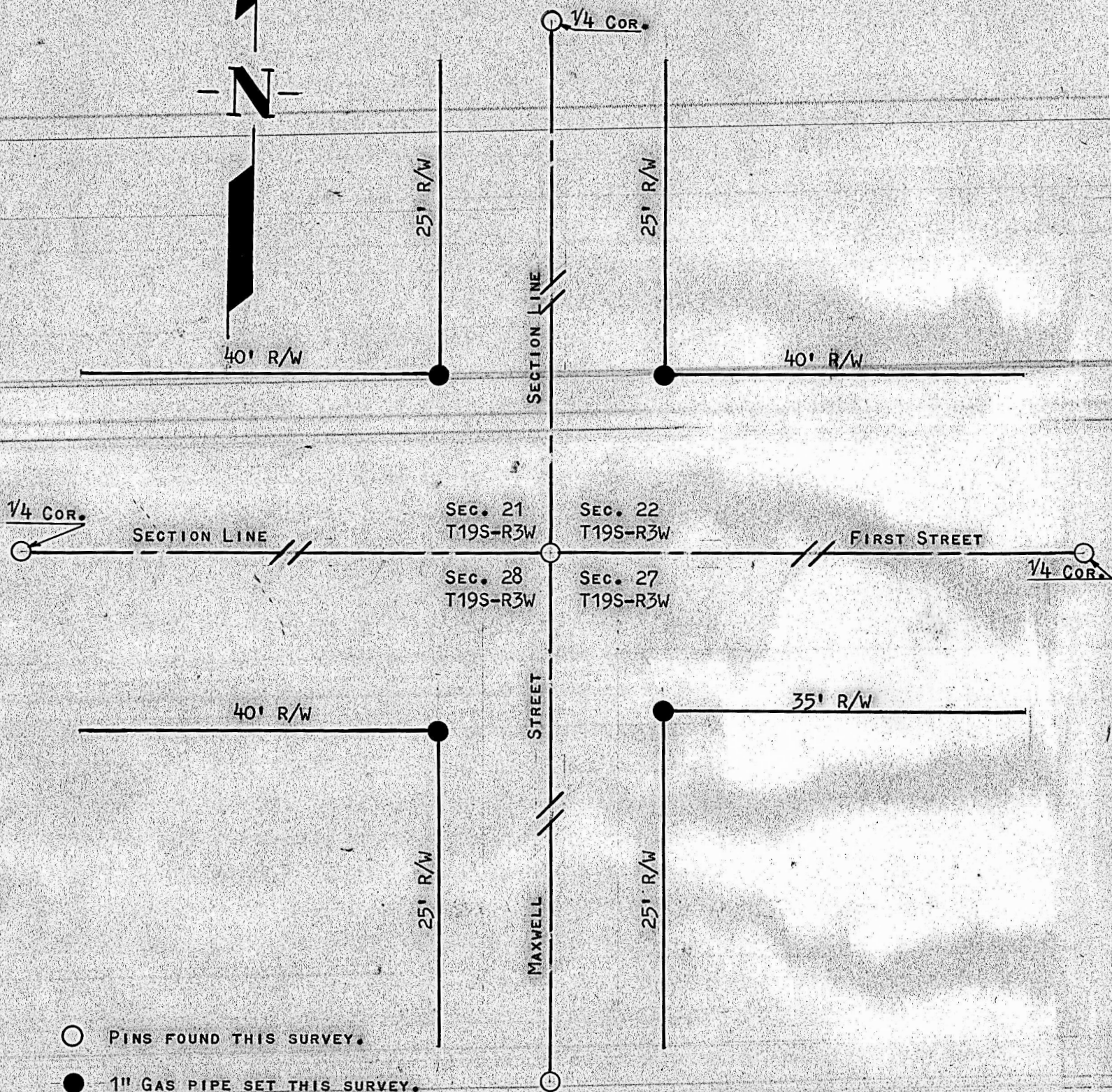


A SURVEY OF COMMON CORNER
SECTION 21, 22, 27, 28, T19S, R3W



STATE OF KANSAS) SS
COUNTY OF McPHERSON)

I, FRANCIS D. WAGNER, COUNTY ENGINEER OF McPHERSON COUNTY, KANSAS DO HEREBY CERTIFY THAT I DID CAUSE TO BE DONE ON THE 15TH DAY OF SEPTEMBER, 1961, A SURVEY TO DETERMINE THE RIGHT-WAY AT THE COMMON CORNER OF SECTION 21, 22, 27, 18, T19S, R3W OF THE 6TH P.M. AND THAT THE ACCOMPANYING PLAT IS A TRUE EXHIBIT OF SAID SURVEY.

Francis D. Wagner

FRANCIS D. WAGNER
COUNTY ENGINEER
McPHERSON COUNTY

18 SEPTEMBER, 1961



MICROFILM