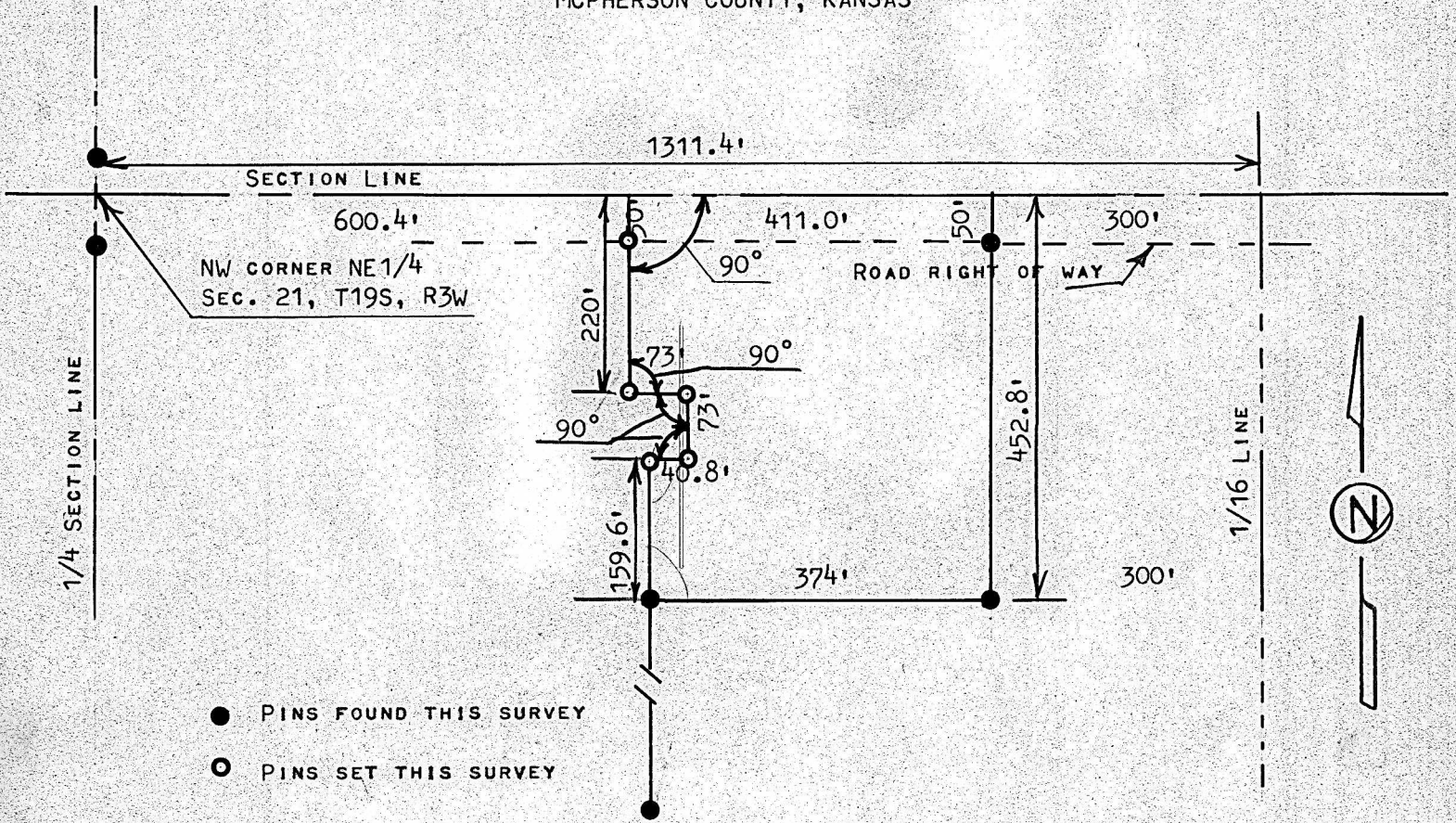


A SURVEY IN THE NE1/4, SECTION 21, T19S, R3W
MCPHERSON COUNTY, KANSAS



STATE OF KANSAS:)
COUNTY OF MCPHERSON) SS

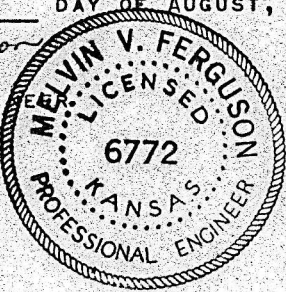
I, MELVIN FERGUSON, PROFESSIONAL ENGINEER OF THE STATE OF KANSAS DO HEREBY CERTIFY THAT UNDER MY SUPERVISION A SURVEY WAS MADE IN THE NW1/4, NE1/4, SECTION 21, T19S, R3W OF THE 6TH P.M. AND DESCRIBED AS FOLLOWS;

BEGINNING 600.4 FEET EAST OF THE NW CORNER OF SAID NE1/4, SECTION 21, T19S, R3W; THENCE RIGHT ANGLE SOUTH 220.0 FEET; THENCE RIGHT ANGLE EAST 73 FEET; THENCE RIGHT ANGLE SOUTH 73 FEET; THENCE RIGHT ANGLE WEST 40.8 FEET; THENCE SOUTH PARALLEL WITH THE 1/16 LINE 159.6 FEET; THENCE EAST PARALLEL WITH SECTION LINE 374 FEET; THENCE NORTH PARALLEL WITH 1/16 LINE 452.8 FEET AND TO SECTION LINE; THENCE WEST ON SECTION LINE 411.0 FEET AND TO PLACE OF BEGINNING, SAID TRACT OF LAND CONTAINS 4.0 ACRES MORE OR LESS, AND THAT THE ABOVE PLAT IS A TRUE EXHIBIT OF SAID SURVEY AS FAR AS IT IS KNOWN TO ME.

SURVEY CALLED FOR BY PHILIP CHRISTOPHER

SIGNED THIS 15th DAY OF AUGUST, 1978

MELVIN FERGUSON
PROFESSIONAL ENGINEER
MCPHERSON, KANSAS



MICROFILM

MICROFILM