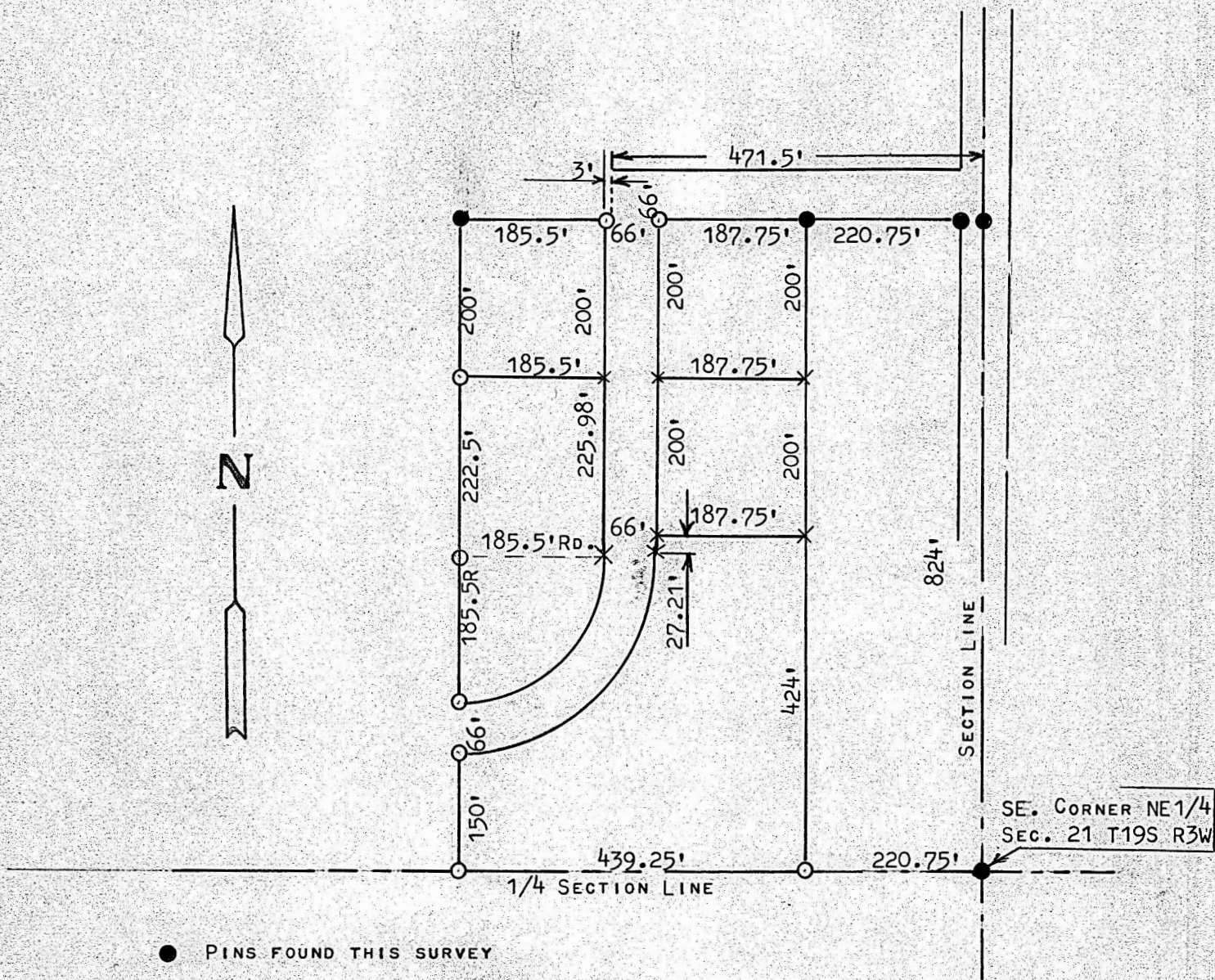


A SURVEY OF A TRACT OF LAND IN THE
NE 1/4, SECTION 21, T19S, R3W
MCIPHERSON COUNTY, KANSAS



I, MELVIN FERGUSON, PROFESSIONAL ENGINEER OF THE STATE OF KANSAS
DO HEREBY CERTIFY THAT UNDER MY SUPERVISION A SURVEY WAS MADE IN
THE NE 1/4, SECTION 21, T19S, R3W OF THE 6TH P.M. AND DESCRIBED AS
FOLLOWS: