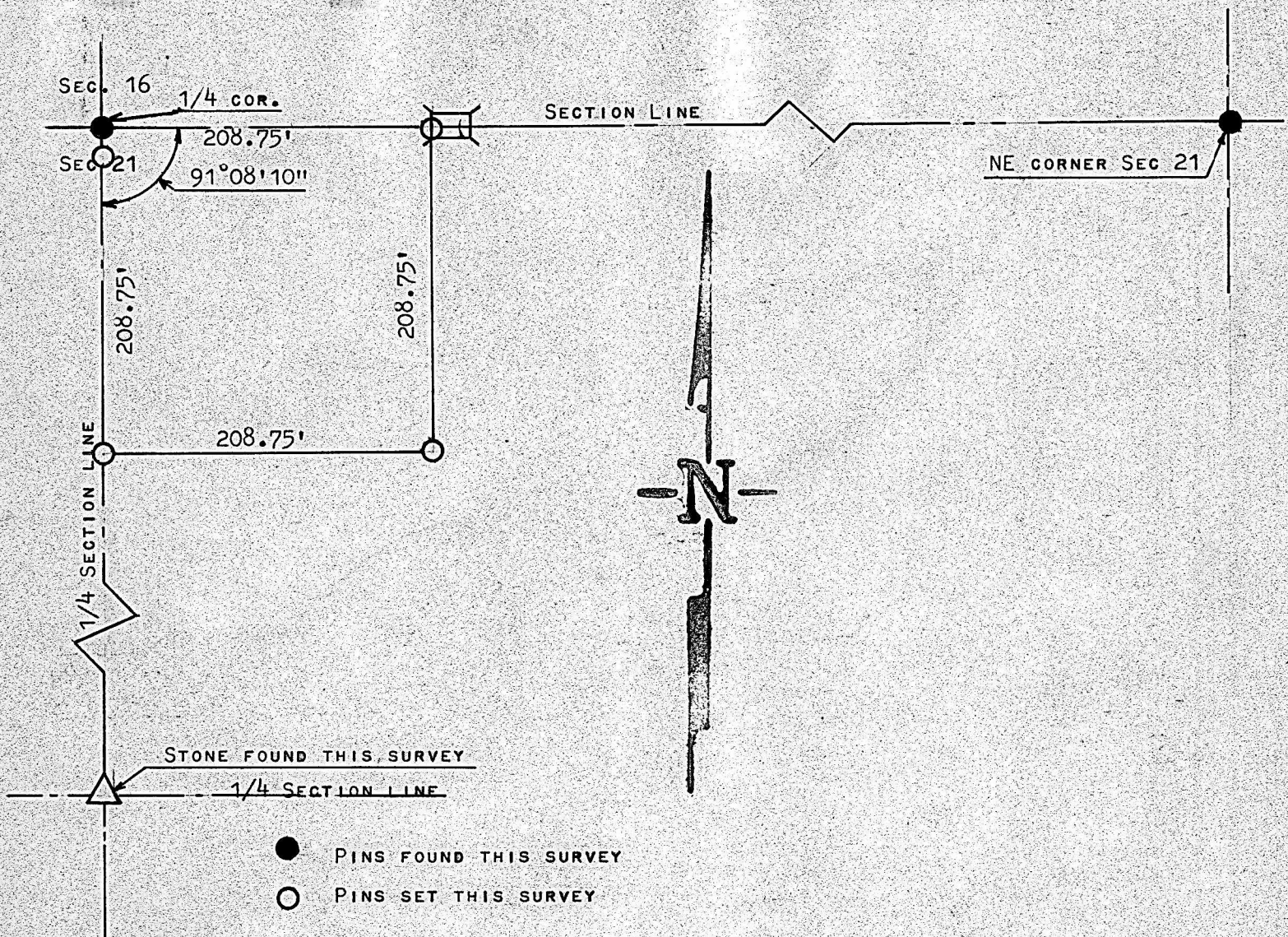


A SURVEY IN THE NE 1/4  
SECTION 21, T19S, R3W  
McPHERSON, KANSAS



STATE OF KANSAS )  
COUNTY OF MCPHERSON ) SS

I, FRANCIS R. RANKIN, PROFESSIONAL ENGINEER OF THE  
STATE OF KANSAS DO HERBY CERTIFY THAT UNDER MY SUPERVISION  
A SURVEY WAS MADE IN THE NE1/4 SECTION 21 T19S-R3W OF THE  
6TH. P.M. AND DESCRIBED AS FOLLOWS:

BEGINNING AT THE NW CORNER OF THE NE1/4 OF SAID SECTION,  
THENCE SOUTH ON 1/4 SECTION LINE 208.75 FEET; THENCE EAST  
PARALLEL WITH SOUTH SECTION LINE 208.75 FEET; THENCE NORTH  
TO SECTION LINE 208.75 FEET; THENCE WEST ON SECTION LINE  
208.75 FEET TO PLACE OF BEGINNING, LAND HEREIN DESCRIBED  
CONTAINS 1.0 ACRES MORE OR LESS, AND THAT THE ACCOMPANYING  
PLAT IS A TRUE EXHIBIT OF SAID SURVEY AS FAR AS IT IS KNOWN  
TO ME.

SURVEY CALLED FOR BY GLEN CHRISTENSEN

SIGNED THIS 14 DAY OF SEPTEMBER, 1965

