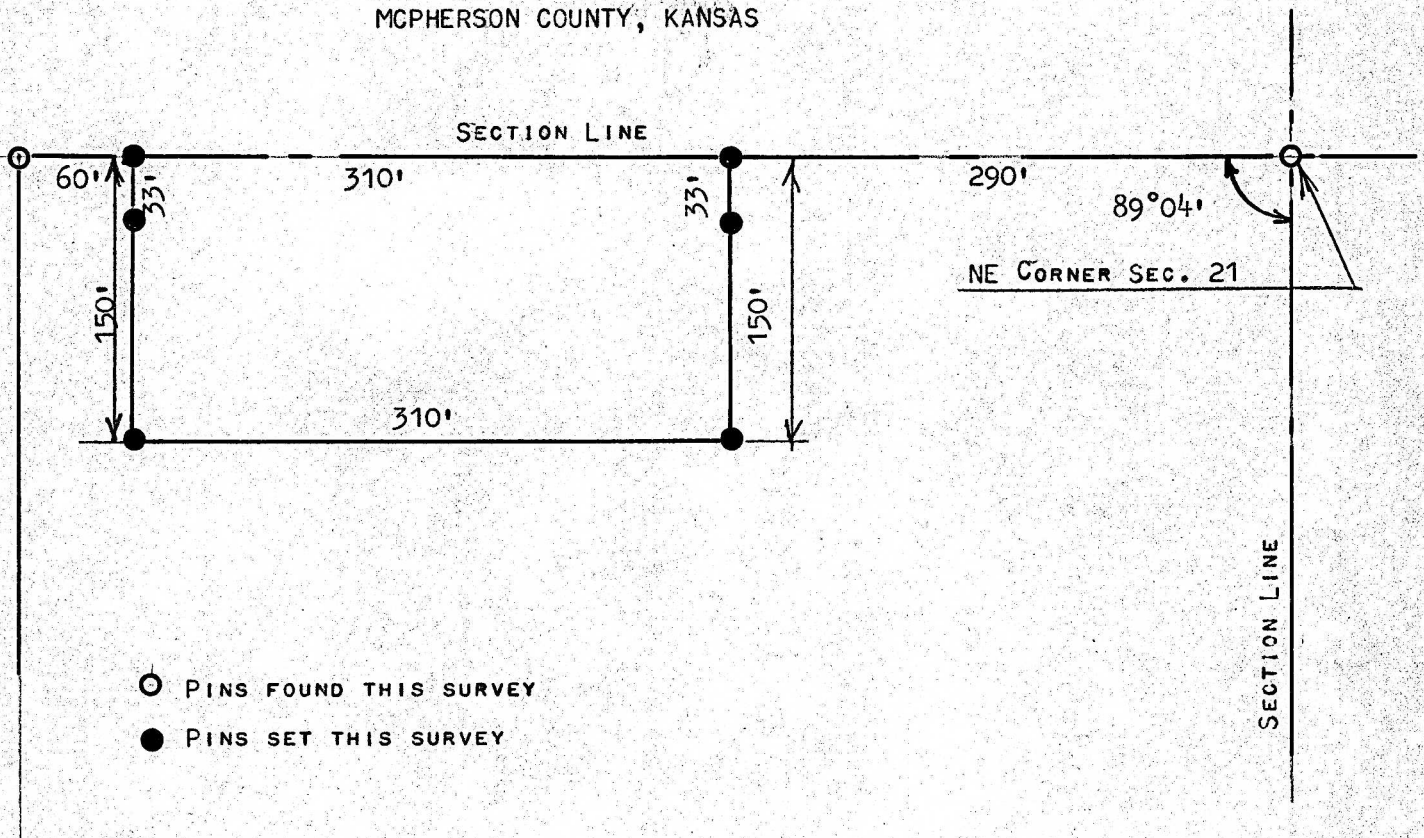


A SURVEY OF TRACT OF LAND IN THE  
NE1/4, SECTION 21, T19S, R3W  
MCIPHERSON COUNTY, KANSAS



STATE OF KANSAS )  
COUNTY OF MCIPHERSON ) SS

I, FRANCIS RANKIN, PROFESSIONAL ENGINEER OF THE STATE OF KANSAS,  
DO HEREBY CERTIFY THAT UNDER MY SUPERVISION A SURVEY WAS MADE IN  
THE NE1/4, SECTION 21, T19S, R3W OF THE 6TH P.M. AND DESCRIBED  
AS FOLLOWS;

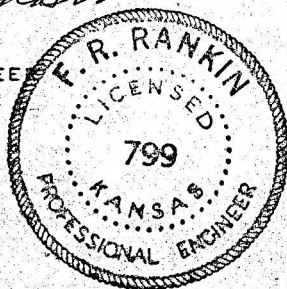
BEGINNING AT A POINT 290 FEET WEST OF THE NE CORNER OF SAID NE1/4,  
SECTION 21, T19S R3W; THENCE SOUTH PARALLEL WITH SECTION LINE 150 FEET;  
THENCE WEST PARALLEL WITH SECTION LINE 310 FEET; THENCE NORTH TO SECTION  
LINE 150 FEET; THENCE EAST 310 FEET TO PLACE OF BEGINNING SAID TRACT OF  
LAND CONTAINS 1.07 ACRES MORE OR LESS, AND THAT THE ACCOMPANYING PLAT  
IS A TRUE EXHIBIT OF SAID SURVEY AS FAR AS IT IS KNOWN TO ME.

SURVEY CALLED FOR BY HARRY WEELBORG

SIGNED THIS 11 DAY OF JUNE, 1973

*Francis Rankin*

FRANCIS RANKIN  
PROFESSIONAL ENGINEER  
MCIPHERSON, KANSAS



MICROFILM

MICROFILM