

BASIS OF BEARING = NAD 83 KANSAS SOUTH ZONE

#### LEGEND

- △ - Sectional Monument Found
- ▲ - Section Monument Set (5/8" x 24" Iron Rebar w/G.S.S. Cap)
- - 5/8" x 24" Iron Rebar Set w/G.S.S. Cap
- (C) - Calculated
- (M) - Measured
- (PS) - Previous Survey (LS 697, 3-1-1999)
- (R) - Record measurement

#### DESCRIPTION:

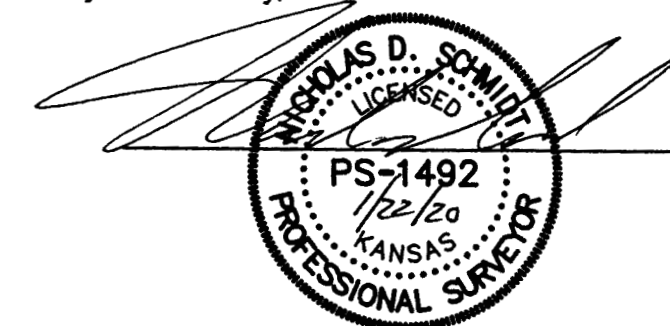
A portion of the Southwest Quarter of the Southwest Quarter of Section 21, Township 19 South, Range 2 West of the 6th Principal Meridian, McPherson County, Kansas described as follows:

Commencing at the Southwest corner of said Southwest Quarter; thence on a NAD 83 Kansas South Zone bearing of North 88°21'31" East on the South line of said Southwest Quarter a distance of 355.52 feet; thence North 01°38'29" West perpendicular to said South line a distance of 51.50 feet to a point on the North Right of Way line of U.S. Highway 56, said point being the point of beginning; thence continuing North 01°38'29" West perpendicular to said South line a distance of 425.07 feet; thence North 88°21'31" East parallel with said South line a distance of 564.49 feet; thence South 01°38'29" East perpendicular to said South line a distance of 423.63 feet to said North Right of Way line; thence South 85°05'31" West on said North Right of Way line a distance of 50.32 feet; thence South 88°21'31" West continuing on said North Right of Way line a distance of 500.00 feet (Record); thence North 85°55'29" West continuing on said North Right of Way line a distance of 14.32 feet to the point of beginning.

Containing 5.525 Acres and subject to any easements or restrictions of record.

#### SURVEYOR'S CERTIFICATE:

I hereby certify this plat to be a true, correct and complete representation of the property described hereon, as surveyed under my supervision, this 22nd day of January, 2020.



Prepared For:		Description:	
GALEN D. UNRUH		A PORTION OF THE SW 1/4, SW 1/4 SECTION 21, T19S, R2W McPHERSON COUNTY, KANSAS	
Prepared By:		Garber Surveying Service, P.A.	
		HUTCHINSON (Main Office) 2908 North Plum St. 67502 Ph. 620-665-7032 Fax 620-663-7401	
		McPHERSON (Branch Office) 115 East Marlin 67460 Ph. 620-241-4441 Fax 620-241-4458	
		NEWTON (Branch Office) 511 North Poplar St. 67114 Ph. 316-283-5053 Fax 316-283-5073	
		MANHATTAN (Branch Office) 3226 Kimball Ave Ste.#2 66503 Ph. 785-320-4810	
Drawn By: EWS	Scale: 1"= 50'	Date of Field Work: January 8, 2020	Job No:
Checked By: DEG	Date: 01/22/2020	Sheet 1 of 1 Sheet(s)	G2020-12