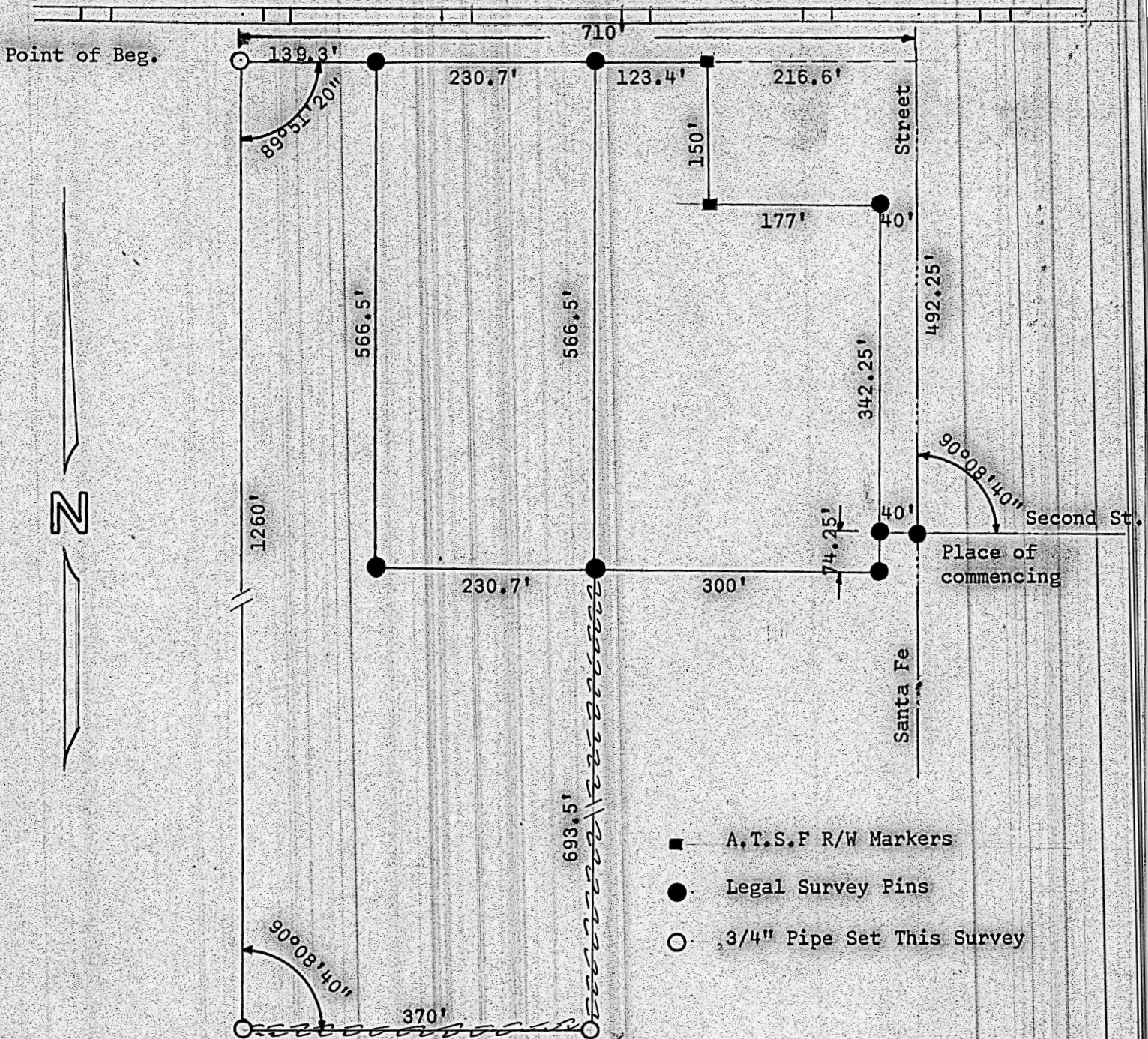


PART OF THE SOUTHEAST  
QUARTER SECTION 21, T19S, R2W  
SCHOOL DISTRICT #70



State of Kansas )  
County of McPherson) SS

I, Francis Rankin, licensed Professional Engineer, do hereby certify that I did cause to be done on the 9th day of August, 1962 a survey in the Southeast Quarter of Section 21, T19S, R2W of the 6th P.M. and that said tract described as follows:

Commencing at the intersection of Second Street and Santa Fe Street; thence north 492.25 feet to a point 50 feet south of center of main line A.T.S.F. R.R.; thence west parallel with said tracks 710 feet to a place of beginning; thence south 1260 feet parallel with Santa Fe Street; thence east 370 feet parallel with said tracks, thence north 693.5 feet; thence west 230.7 feet; thence north 566.5 feet to the R/W of said railroad; thence west 139.3 feet to the place of beginning and that the accompanying plat is a true exhibit of said survey.

Signed this 23 day of August, 1962



*Francis Rankin*  
Francis Rankin  
County Engineer  
McPherson County,  
McPherson, Kansas

MICROFILM