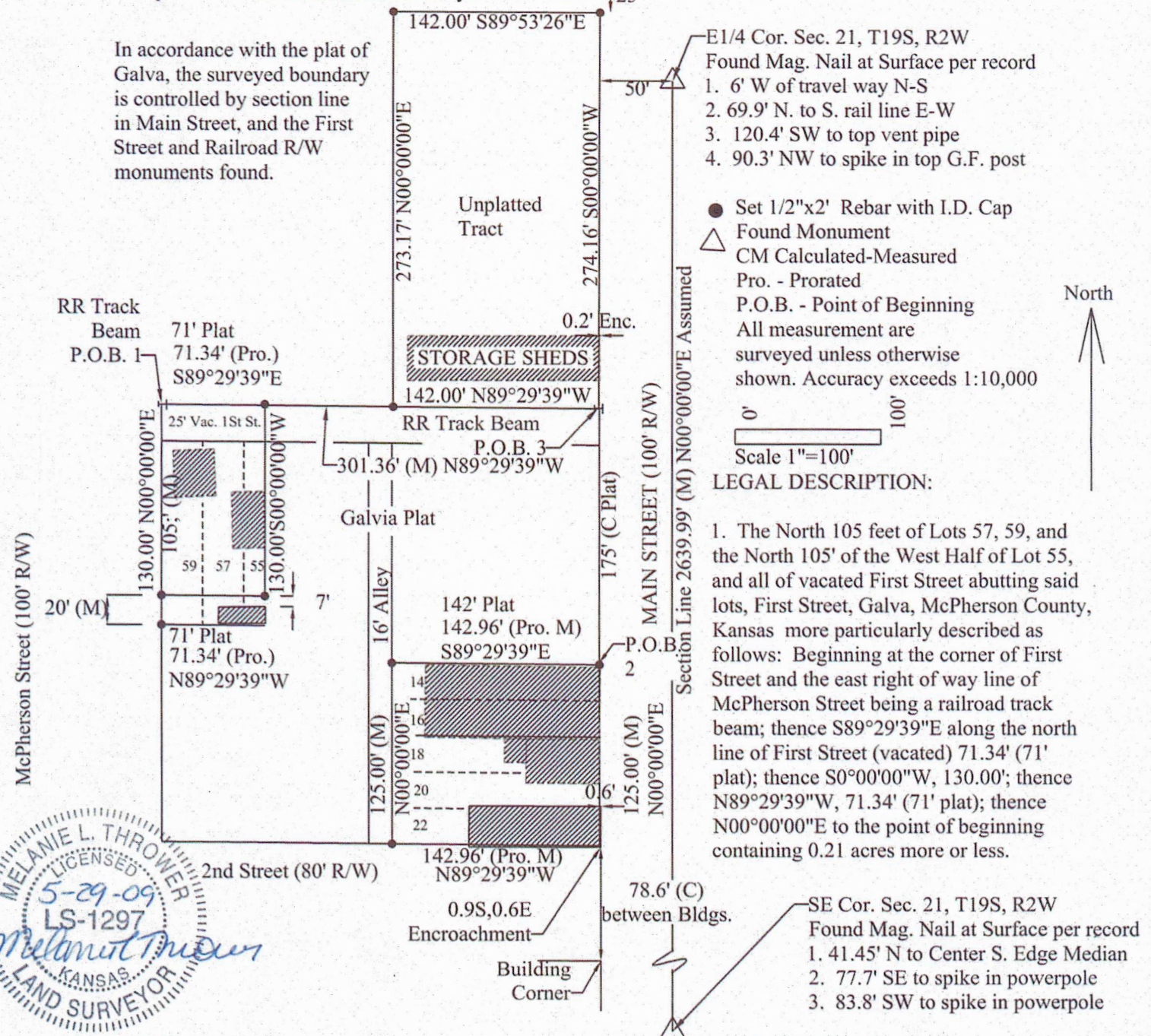


Centerline Railroad Tracks N89°53'26"W  
25' R/W per 1915 Plan at McPherson County Public Works

In accordance with the plat of Galva, the surveyed boundary is controlled by section line in Main Street, and the First Street and Railroad R/W monuments found.



2. Lots 14, 16, 18, 20, and 22, Main Street, Galva, McPherson County, Kansas more particularly described as follows: Beginning at a point on the west right of way line of Main Street, 175.00' south of the intersection of First Street and said west right of way line of Main Street being a railroad track beam; then S00°00'00"E, 125.00'; then N89°29'39"W, 142.96' (142' plat); then N00°00'00"E, 125'; then S89°29'30"E, 142.96' (142' plat) to the point of beginning containing 0.41 acres more or less.

3. A Tract located in the East Half of Section 21, T19S, R2 W of the 6th P.M. McPherson County, Kansas described as follows: Beginning at the corner of the First Street and the west road right of way of Main Street, Galva, Kansas, then along the north line of First Street N89°29'39"W, 142'; then N00°00'00"E, 273.17' to a point 25' south of the center of the railroad tracks; then S89°53'26"E parallel to the railroad tracks, 142'; then S00°00'00"W, 274.16' to the point of beginning containing 0.89 acres more or less.

- 1) Survey was made per client request and no title work has been provided to the surveyor; therefore the number and extent of easement and or right-of-way of record affecting said property has not been shown.
- 2) Section corner ties filed with the county engineer office and the Kansas historical society.

I hereby certify this plat to be a true, correct and complete representation of the property described hereon, as surveyed by Melanie L. Thrower on May 27, 2009.