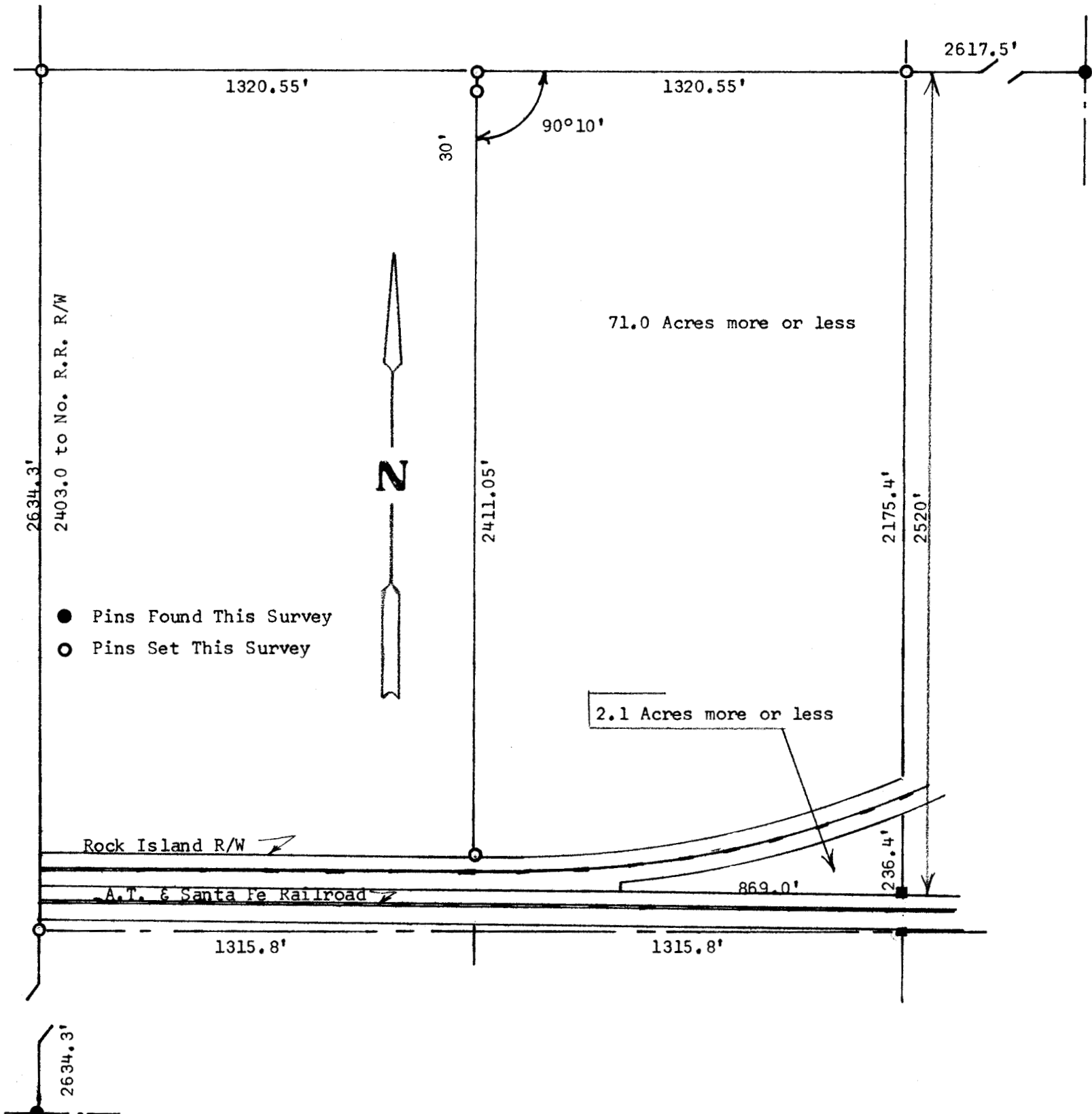


A SURVEY OF THE E1/2, NW 1/4
SECTION 21, T19S, R1W
MC PHERSON COUNTY, KANSAS



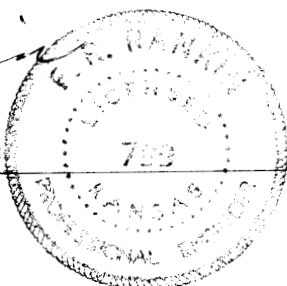
State of Kansas)
County of McPherson) SS

I, F. R. Rankin, County Engineer of McPherson County, Kansas, do hereby certify that under my supervision a survey was made of the E1/2, NW 1/4, of Section 21, T19S, R1W of the 6th P.M. That land lying North of the Atchison, Topeka and Santa Fe Railroad and except that part used for Chicago Rock Island and Pacific Railroad. Said tract of land contains 73.1 acres more or less and that the accompanying plat is a true exhibit of said survey.

Survey called for by R. F. Klassen, Adm.

Signed this 10 day of November, 1970

F. R. Rankin
F. R. Rankin
County Engineer
McPherson, Kansas



MICROFILM