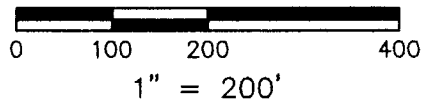
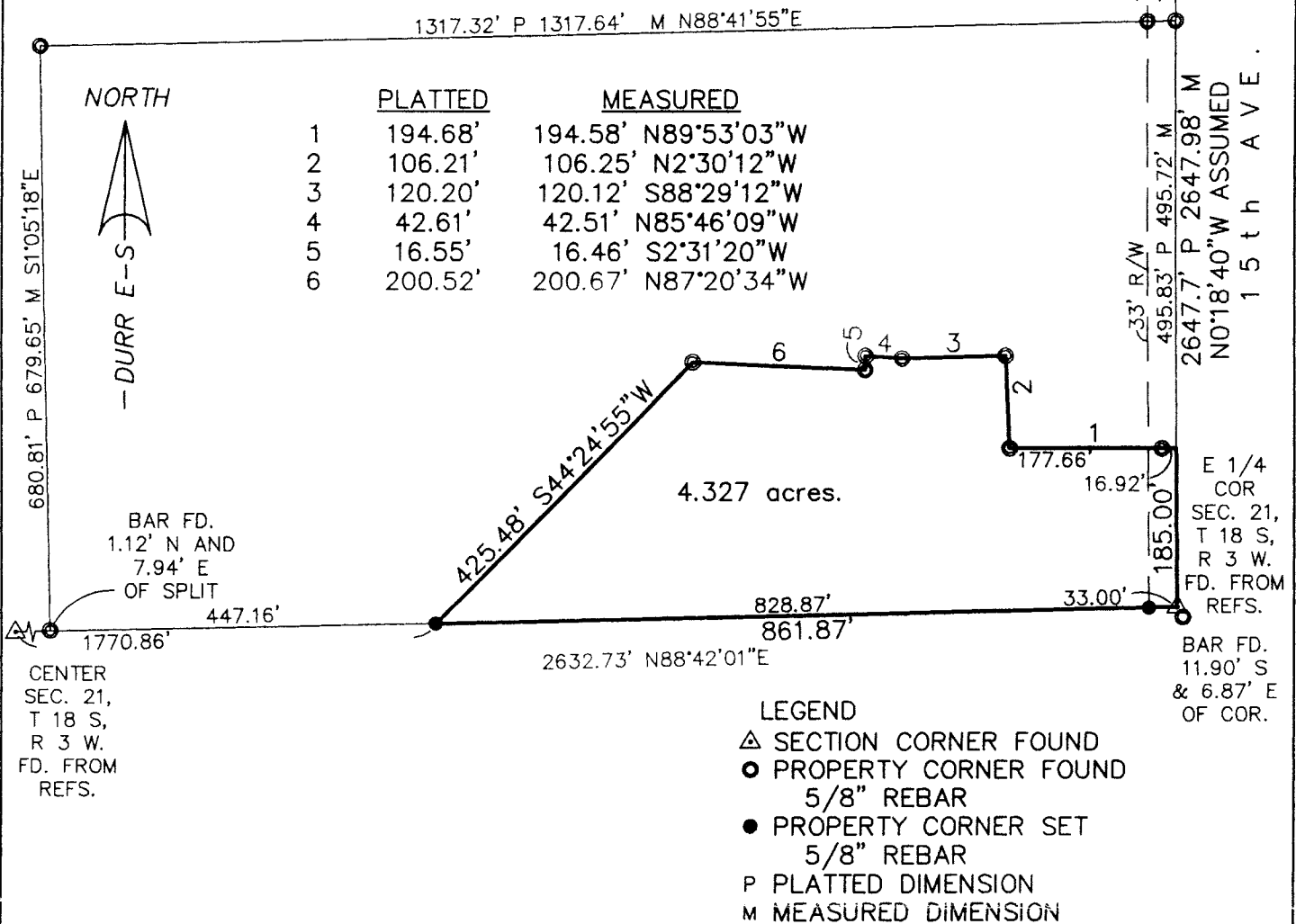


DURR ENGINEERING,
SURVEYING, PLANNING, & DEVELOPMENT
525 HOWARD STREET
HUTCHINSON, KS 67501
PHONE: 620-663-9613

GRAPHIC SCALE
IN FEET



NE COR
SEC. 21,
T 18 S,
R 3 W.
FD. FROM
REFS.



REVIEW SURVEYOR'S CERTIFICATE
STATE OF KANSAS }
COUNTY OF McPHERSON } SS

REVIEWED IN ACCORDANCE WITH THE
REQUIREMENTS OF K.S.A. 58-2004,
_____, 2007.

REGISTERED LAND SURVEYOR

NOTES:

- 1) NO TITLE WORK PROVIDED TO SURVEYOR PRIOR TO SURVEY
- 2) SECTION CORNER TIES TO BE SENT TO COUNTY ENGINEER'S OFFICE AND KANSAS STATE HISTORICAL SOCIETY

I, DUNCAN W. DURR, DO HEREBY CERTIFY THE
HEREON SURVEY TO BE A TRUE AND ACCURATE
REPRESENTATION OF THE CONDITIONS FOUND
ON THE DATE HEREON WRITTEN.

REGISTERED LAND SURVEYOR

CLIENT: THOMAS KILBRIDE DRAWN: DURR PROJECT: 7003 SHEET: 1 OF: 1

A TRACT IN THE NORTHEAST QUARTER OF SECTION 21, TOWNSHIP 18 SOUTH, RANGE 3 WEST OF THE SIXTH PRINCIPAL MERIDIAN, MORE PARTICULARLY DESCRIBED AS FOLLOWS: BEGINNING AT THE SOUTHEAST CORNER OF SAID NORTHEAST QUARTER; THENCE N0°18'40"W, ASSUMED ALONG THE EAST LINE OF SAID NORTHEAST QUARTER, A DISTANCE OF 185.00 FEET; THENCE N89°53'03"W, A DISTANCE OF 194.58 FEET; THENCE N2°30'12"W, A DISTANCE OF 106.25 FEET; THENCE S88°29'12"W, A DISTANCE OF 120.12 FEET; THENCE N85°46'09"W, A DISTANCE OF 42.51 FEET; THENCE S2°31'20"W, A DISTANCE OF 16.46 FEET; THENCE N87°20'34"W, A DISTANCE OF 200.67 FEET; THENCE S44°24'55"W, A DISTANCE OF 425.48 FEET TO A POINT ON THE SOUTH LINE OF SAID NORTHEAST QUARTER; THENCE N88°42'01"E ALONG SAID SOUTH LINE, A DISTANCE OF 861.87 FEET TO THE POINT OF BEGINNING; TRACT CONTAINS 4.327 ACRES, EXCEPT THE EAST 33 FEET FOR ROAD RIGHT OF WAY AND ANY OTHER EASEMENTS OF RECORD; ALL IN McPHERSON COUNTY, KANSAS.

STATE: KANSAS COUNTY: McPHERSON SEC: 21 TWP: 18 S R: 3 W DATE: 2/8/2007