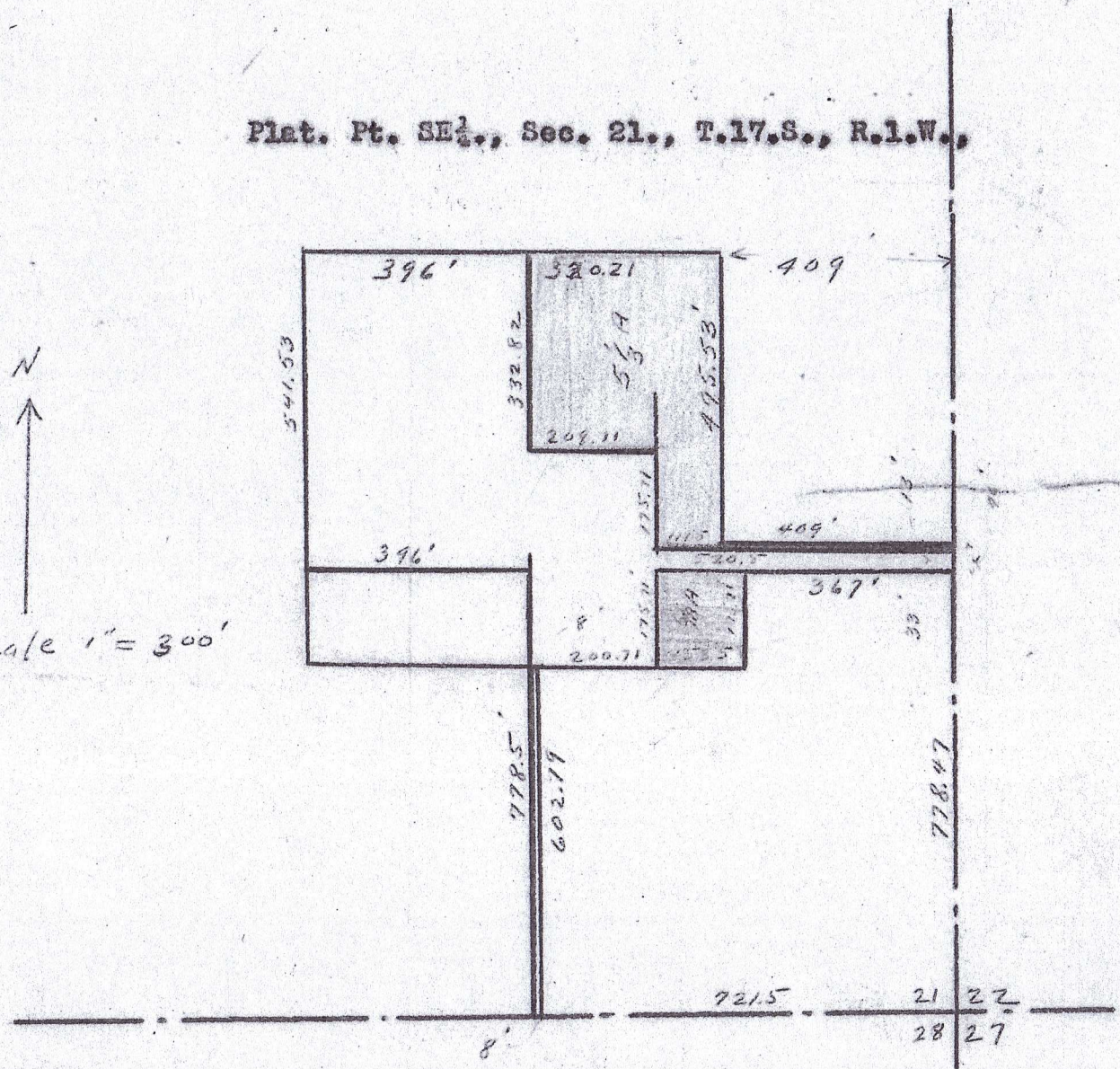


Plat. Pt. SE<sup>1</sup>., Sec. 21., T.17.S., R.1.W.,

N  
↑  
Scale 1" = 300'



Plat of land now owned and proposed purchase (in red) of School Dist. 125 in McPherson County, Kansas, as surveyed by undersigned County Engineer of McPherson County, Kansas on the 28th day of September, 1949.

G. D. Johnson