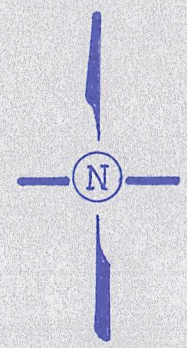
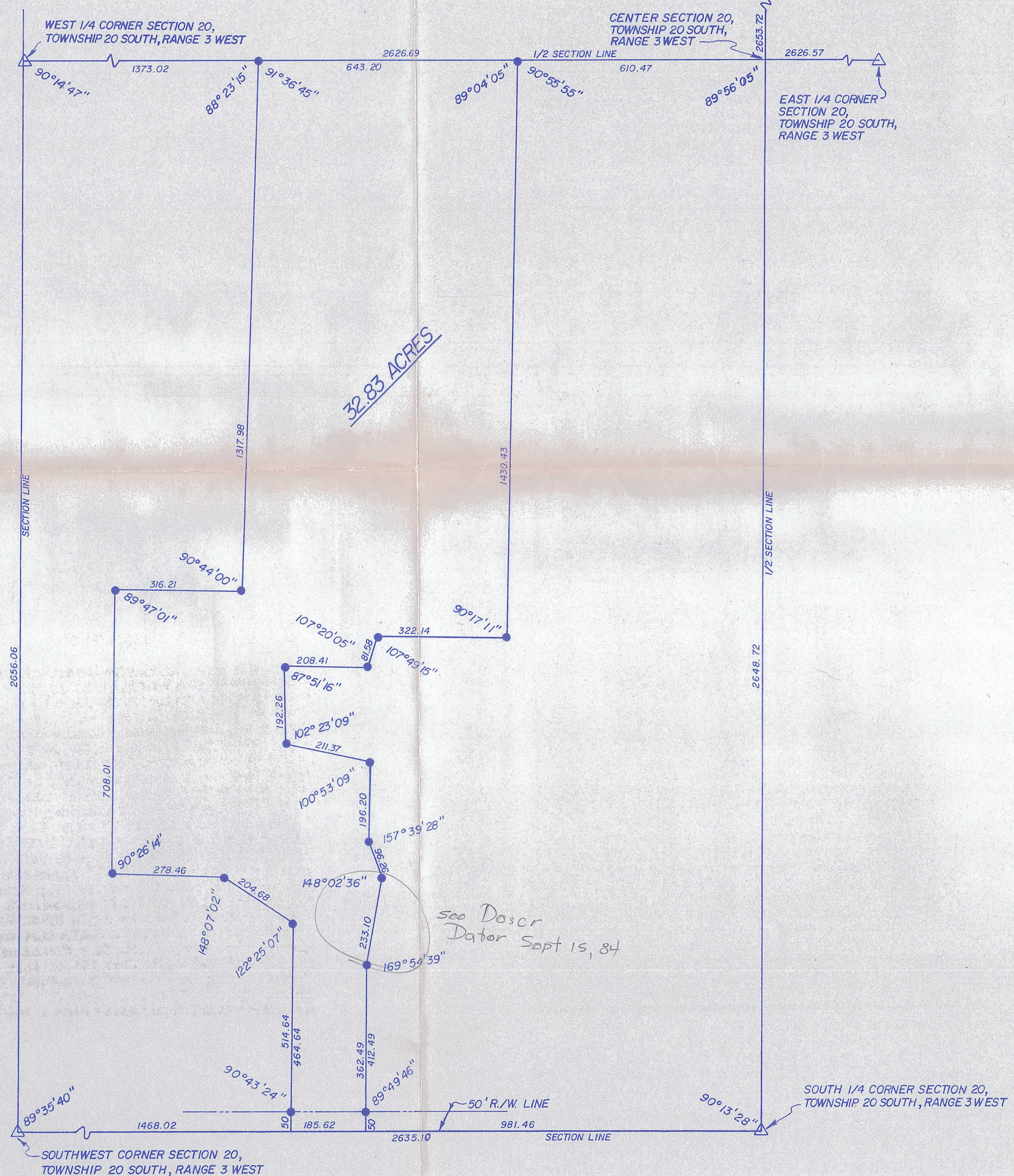


SURVEY OF A PORTION OF THE SOUTHWEST 1/4 OF SECTION 20, TOWNSHIP 20 SOUTH, RANGE 3 WEST OF THE 6th PRINCIPAL MERIDIAN IN McPHERSON COUNTY, KANSAS AS DESCRIBED ON THE ATTACHED SHEET.



SCALE: 1" = 200'

LEGEND  
● — IRON PIN SET

I hereby certify this plat to be a true, correct and complete representation of the property described above and on the attached sheet, as surveyed by me, this 17<sup>th</sup> day of August 1984.

*Daniel E. Garber*  
DANIEL E. GARBER RLS 683



	PREPARED FOR: ERNEST GRAY ESTATE		
	BY: GARBER SURVEYING SERVICE PA. 217 EAST FIRST AVENUE SUITE 16 HUTCHINSON, KANSAS 67501 PHONE 316-665-7032		
	DRAWN BY: RON OWEN	DATE: 8-12-84	PROJECT No.
	SCALE: 1" = 200'		G 84-246