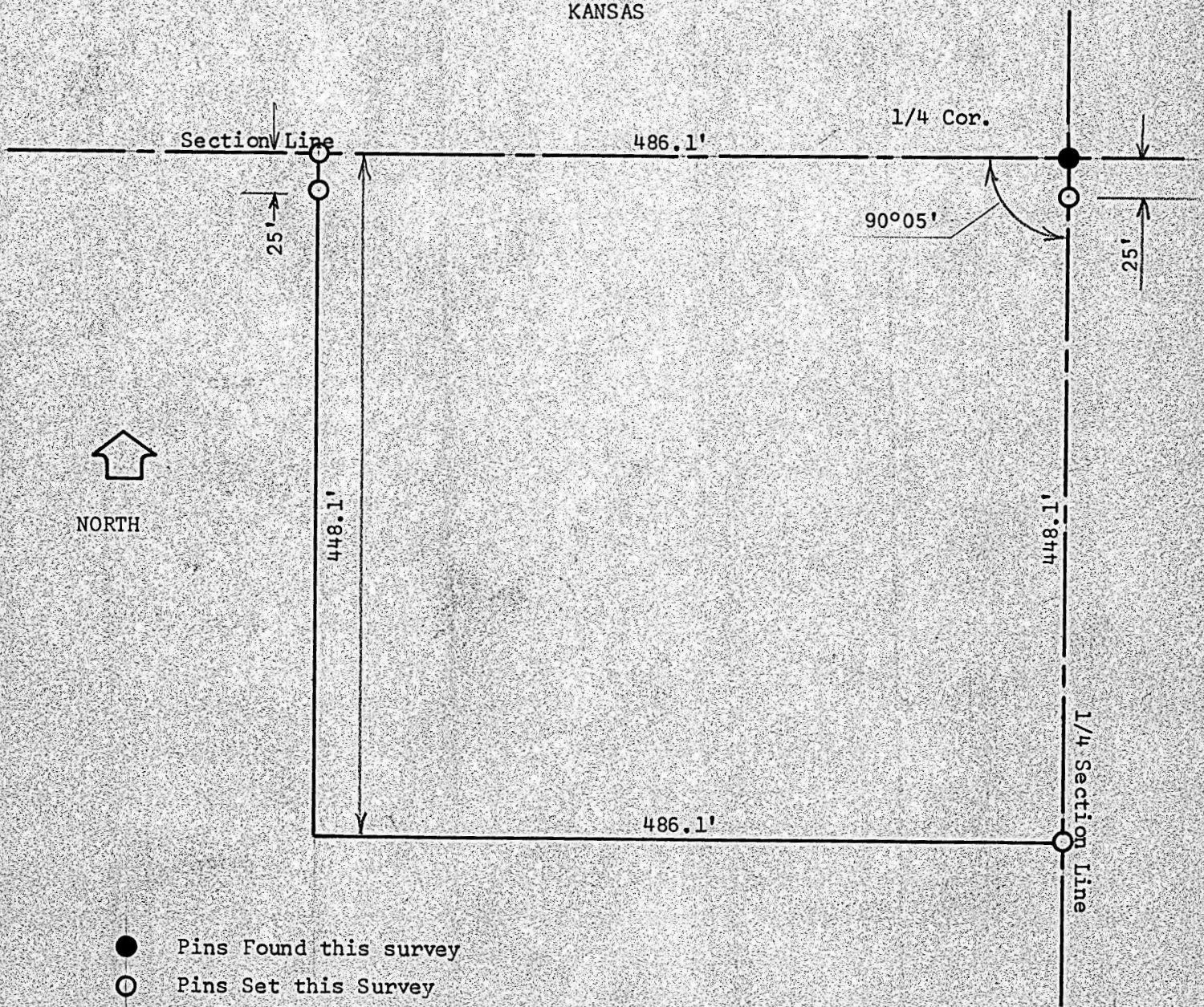


A SURVEY OF A TRACT OF LAND
IN THE NW 1/4, SECTION 20,
T19S, R4W, MC PHERSON COUNTY,
KANSAS



I, F. R. Rankin, County Engineer of McPherson County, Kansas, do hereby certify that under my supervision a survey was made of a tract of land in the NW 1/4 of Section 20, T19S, R4W of the 6th P.M. and is described as follows:

Beginning at the 1/4 corner between Sections 17 and 20; thence South along the 1/4 Section Line 448.1 feet; thence West parallel with Section Line 486.1 feet; thence North, parallel with the 1/4 Section Line, 448.1 feet to the Section Line; thence East along Section Line 486.1 feet to the place of beginning.

Said tract contains 5 acres more or less. The above plat is a true exhibit of said survey as far as it is know to me.

Survey called for by Chisholm Real Estate

Signed this 17 day of March, 1971

F. R. Rankin P.E.
F. R. Rankin
County Engineer
McPherson County, Kansas

