

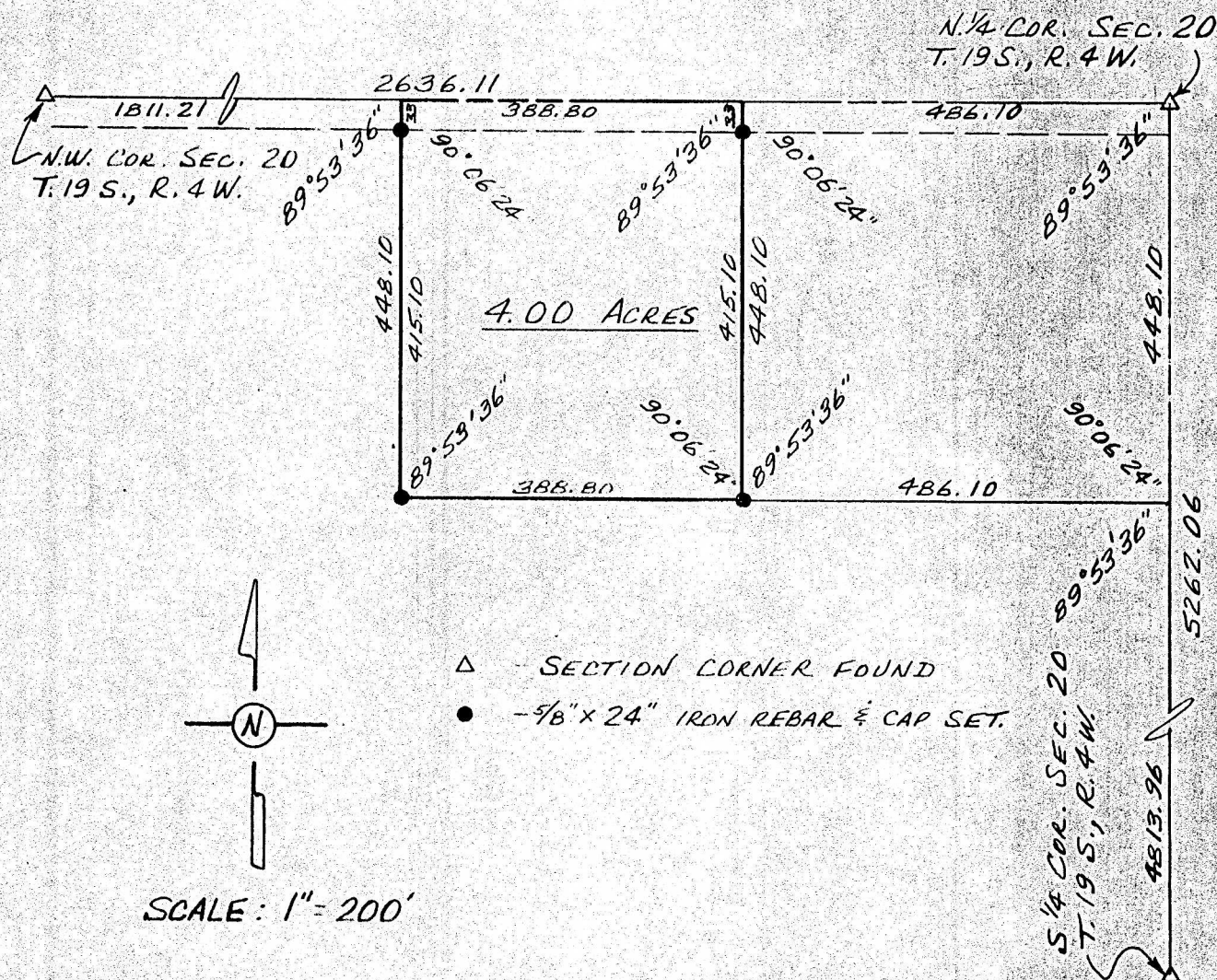
Survey for: Jim Sawyer

By: Garber Surveying Service, P.A.

217 East First Avenue, Suite 9

Hutchinson, Kansas 67501

DESCRIPTION: A tract in the NW $\frac{1}{4}$ of Section 20, T.19 S., R.4 W.
of the 6th P.M. in McPherson County, Kansas as more particularly
described on the attached sheet.



I hereby certify this plat to be a true, correct
and complete representation of the property described
above and on the attached sheet, as surveyed by me,
this 14th day of June, 1982.

Daniel E. Garber
Daniel E. Garber RLS



G82-69