



Garber Surveying Service, P.A.

2908 North Plum St.  
Hutchinson, Kansas 67502  
Phone 620 665-7032 • FAX 620 663-7401

511 North Poplar St.  
Newton, Kansas 67114  
Phone 316 283-5053 • FAX 316 283-5073

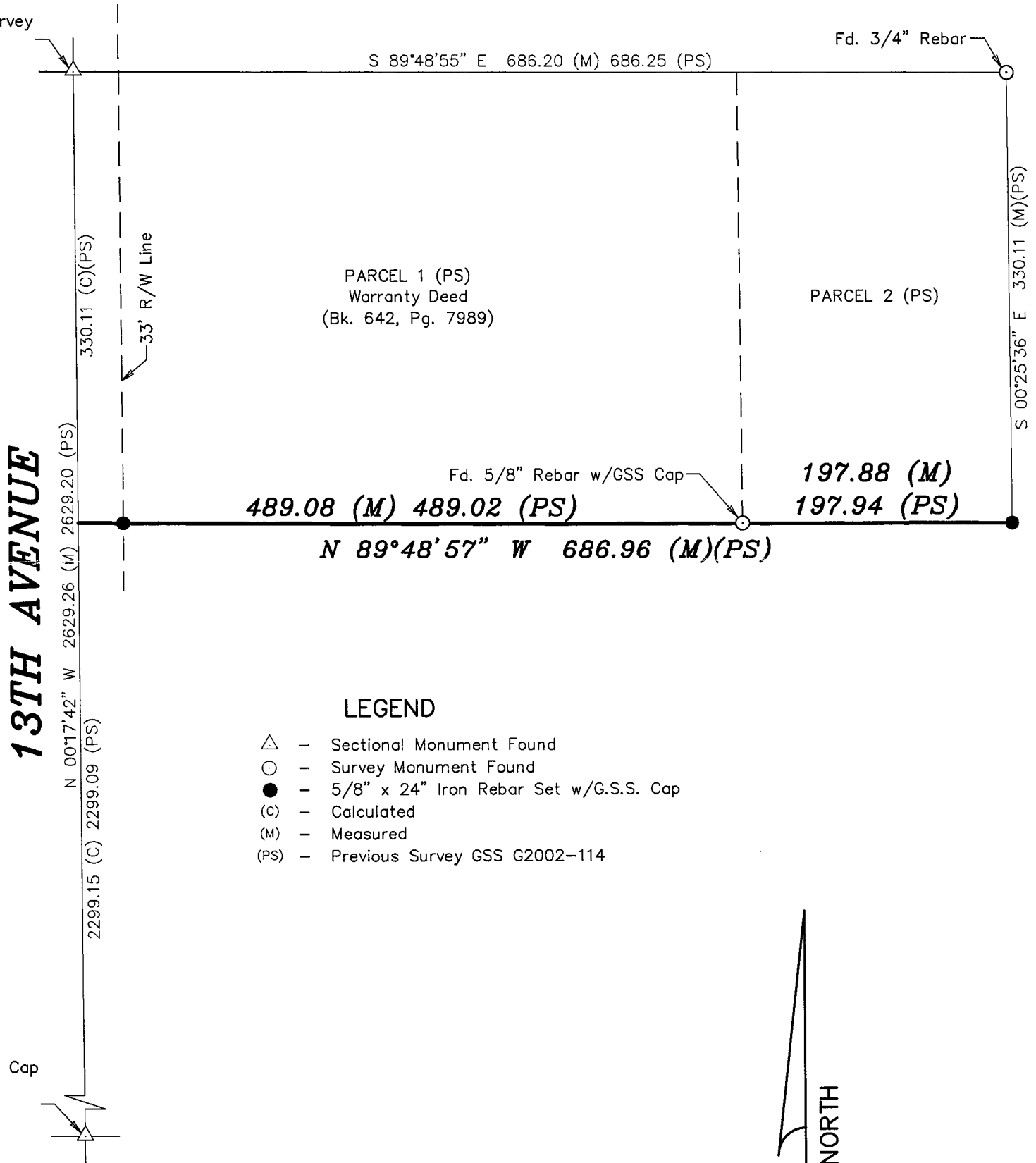
115 East Marlin  
McPherson, Kansas 67460  
Phone 620 241-4441 • FAX 620 241-4458

Project No. G2015-102

SURVEY FOR: PIPING TECHNOLOGY COMPANY

DESCRIPTION: A survey of the South line of parcels 1 and 2 from GSS Project No. G2002-114.

NW Cor. SW 1/4  
Sec. 20, T19S, R3W  
Fd. 3/4" Rebar  
Origin: Previous Survey  
GSS G2002-114



LEGEND

- △ - Sectional Monument Found
- - Survey Monument Found
- - 5/8" x 24" Iron Rebar Set w/G.S.S. Cap
- (c) - Calculated
- (M) - Measured
- (PS) - Previous Survey GSS G2002-114



Scale: 1"=100'

BASIS OF BEARING = NAD 83 KANSAS ZONE 1502

DATE OF FIELD WORK: February 12, 2015

SURVEYOR'S CERTIFICATE:

I hereby certify this plat to be a true, correct and complete representation of the property described above as surveyed under my supervision.  
Dated: March 10, 2015

Nicholas D. Schmidt LS #1492  
3/10/15

Copyright © 2015 Garber Surveying Service, P.A.