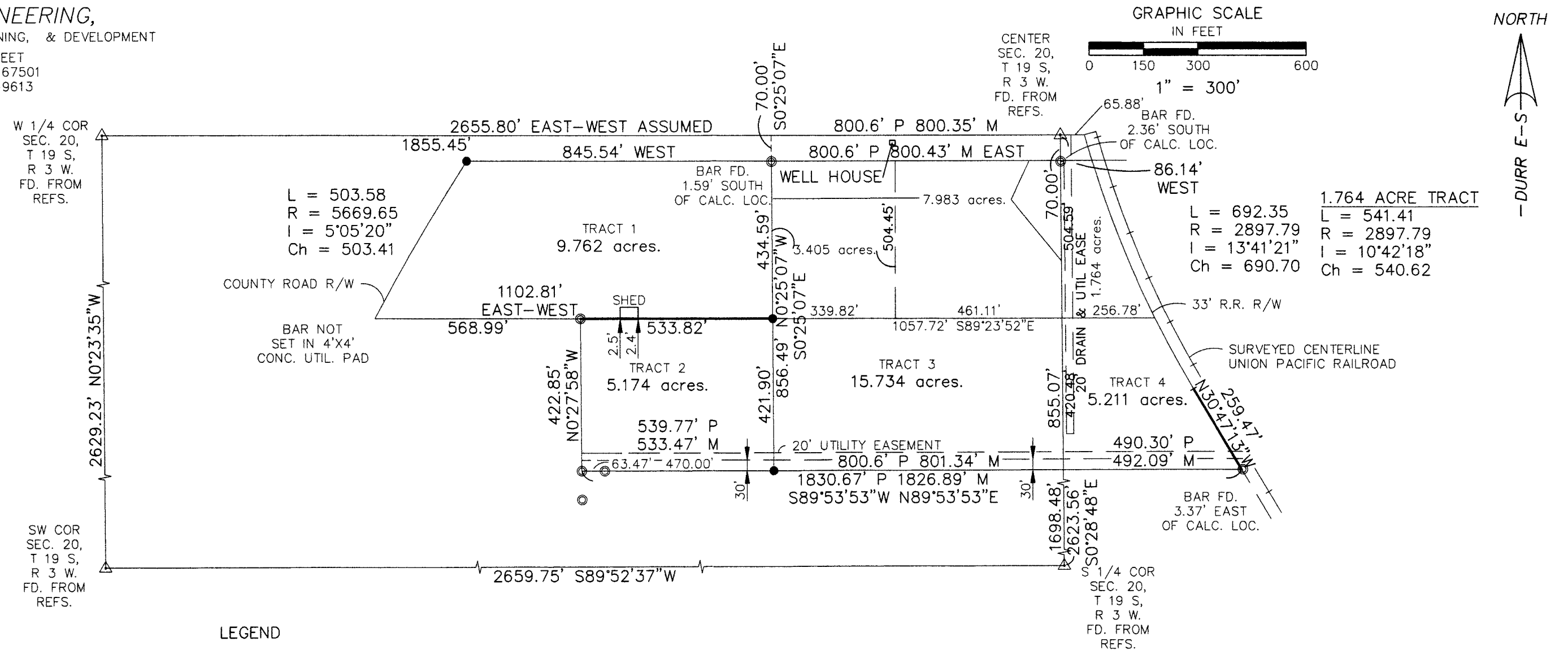


525 HOWARD STREET  
HUTCHINSON, KS 67501  
PHONE: 620-663-9613



△ SECTION CORNER FOUND  
 ⊙ PROPERTY CORNER FOUND  
 ● PROPERTY CORNER SET  
 + RAILROAD  
 P PLATTED DIMENSION  
 M MEASURED DIMENSION

REVIEWED IN ACCORDANCE WITH THE  
REQUIREMENTS OF K.S.A. 58-2005,  
\_\_\_\_\_, 2005.

REGISTERED LAND SURVEYOR

2) NO TITLE WORK PROVIDED TO SURVEYOR PRIOR TO SURVEY  
2) SECTION CORNER TIES TO BE SENT TO COUNTY ENGINEER'S  
OFFICE-AND KANSAS STATE HISTORICAL SOCIETY

I, DUNCAN W. DURR, DO HEREBY CERTIFY THE  
HEREON SURVEY TO BE A TRUE AND ACCURATE  
REPRESENTATION OF THE CONDITIONS FOUND  
ON THE DATE HEREON WRITTEN.

TRACTS IN THE SOUTH HALF OF SECTION 20, TOWNSHIP 19 SOUTH, RANGE 3 WEST OF THE SIXTH PRINCIPAL MERIDIAN, McPHERSON COUNTY, KANSAS; MORE PARTICULARLY DESCRIBED ON THE ATTACHED SHEET 2 OF 2.

STATE: KANSAS COUNTY: McPHERSON SEC: 20 TWP: 19 S R: 3 W DATE: 11/16/2012

REGISTERED LAND SURVEYOR