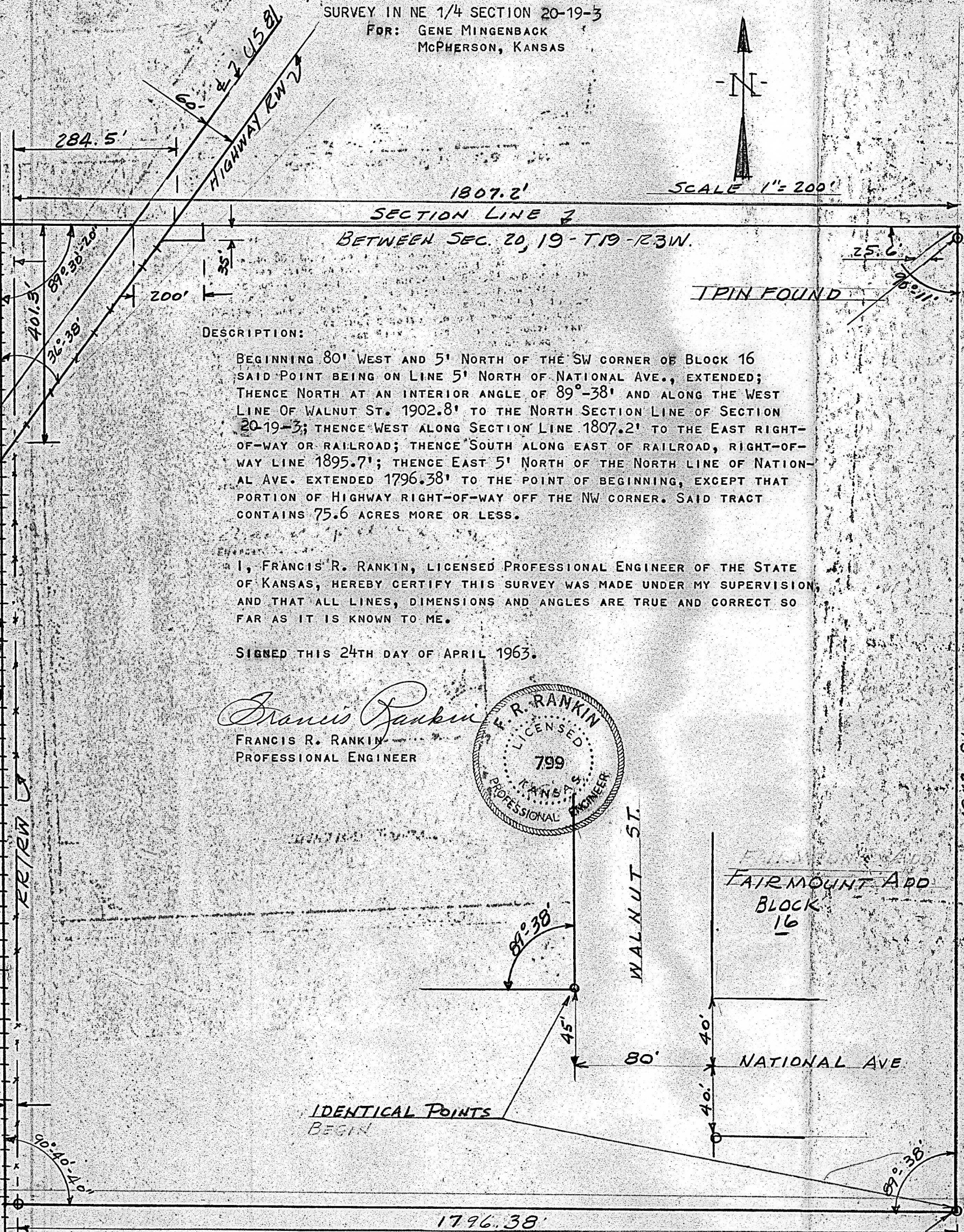


SURVEY IN NE 1/4 SECTION 20-19-3  
FOR: GENE MINGENBACK  
McPHERSON, KANSAS



SCALE 1" = 200'



DESCRIPTION:

BEGINNING 80' WEST AND 5' NORTH OF THE SW CORNER OF BLOCK 16 SAID POINT BEING ON LINE 5' NORTH OF NATIONAL AVE., EXTENDED; THENCE NORTH AT AN INTERIOR ANGLE OF 89°-38' AND ALONG THE WEST LINE OF WALNUT ST. 1902.8' TO THE NORTH SECTION LINE OF SECTION 20-19-3; THENCE WEST ALONG SECTION LINE 1807.2' TO THE EAST RIGHT-OF-WAY OR RAILROAD; THENCE SOUTH ALONG EAST OF RAILROAD, RIGHT-OF-WAY LINE 1895.7'; THENCE EAST 5' NORTH OF THE NORTH LINE OF NATIONAL AVE. EXTENDED 1796.38' TO THE POINT OF BEGINNING, EXCEPT THAT PORTION OF HIGHWAY RIGHT-OF-WAY OFF THE NW CORNER. SAID TRACT CONTAINS 75.6 ACRES MORE OR LESS.

I, FRANCIS R. RANKIN, LICENSED PROFESSIONAL ENGINEER OF THE STATE OF KANSAS, HEREBY CERTIFY THIS SURVEY WAS MADE UNDER MY SUPERVISION, AND THAT ALL LINES, DIMENSIONS AND ANGLES ARE TRUE AND CORRECT SO FAR AS IT IS KNOWN TO ME.

SIGNED THIS 24TH DAY OF APRIL 1963.

*Francis Rankin*  
FRANCIS R. RANKIN  
PROFESSIONAL ENGINEER

