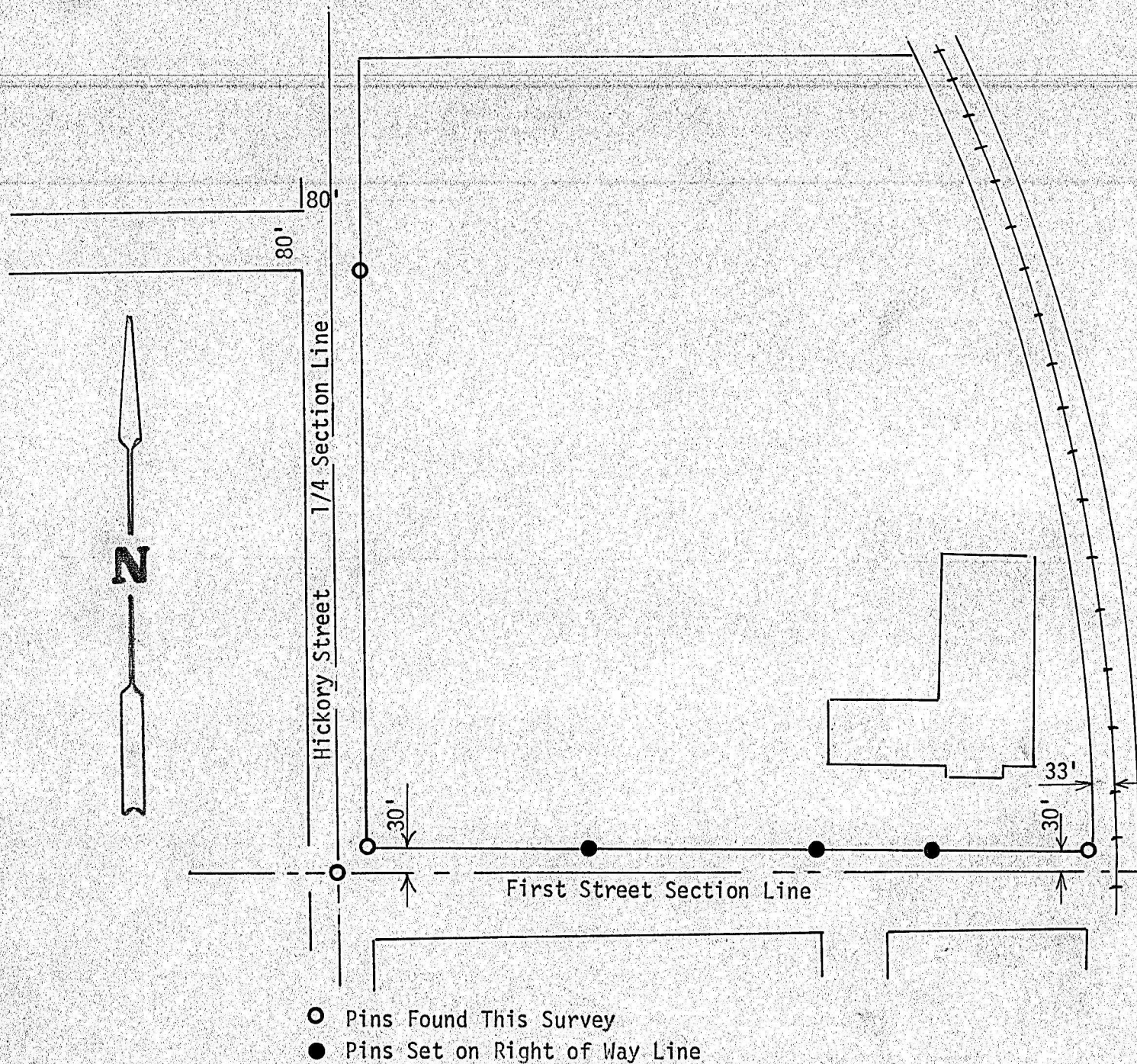


A SURVEY IN THE SE 1/4,
SECTION 20, T19S, R3W
MC PHERSON COUNTY, KANSAS

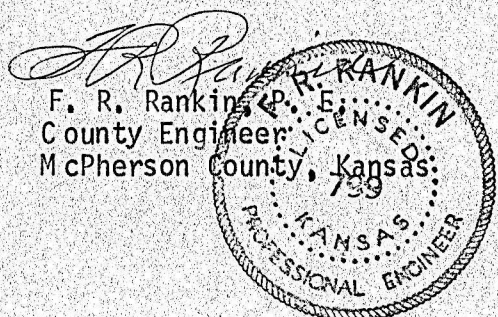


State of Kansas)
County of McPherson) SS

I, F. R. Rankin, County Engineer of McPherson County, Kansas, do hereby certify that under my supervision a survey was made to determine the right-of-way line between Hickory Street and the Railroad on the North side of West First Street in the SE 1/4 Section 20, T19S, R3W of the 6th P.M. and the accompanying plat is a true exhibit of said survey as far as it is known to me.

Survey called for by Willie Johnson (Certain-Teed Products Corp.)

Signed this 16 day of February, 1973



MICROFILM