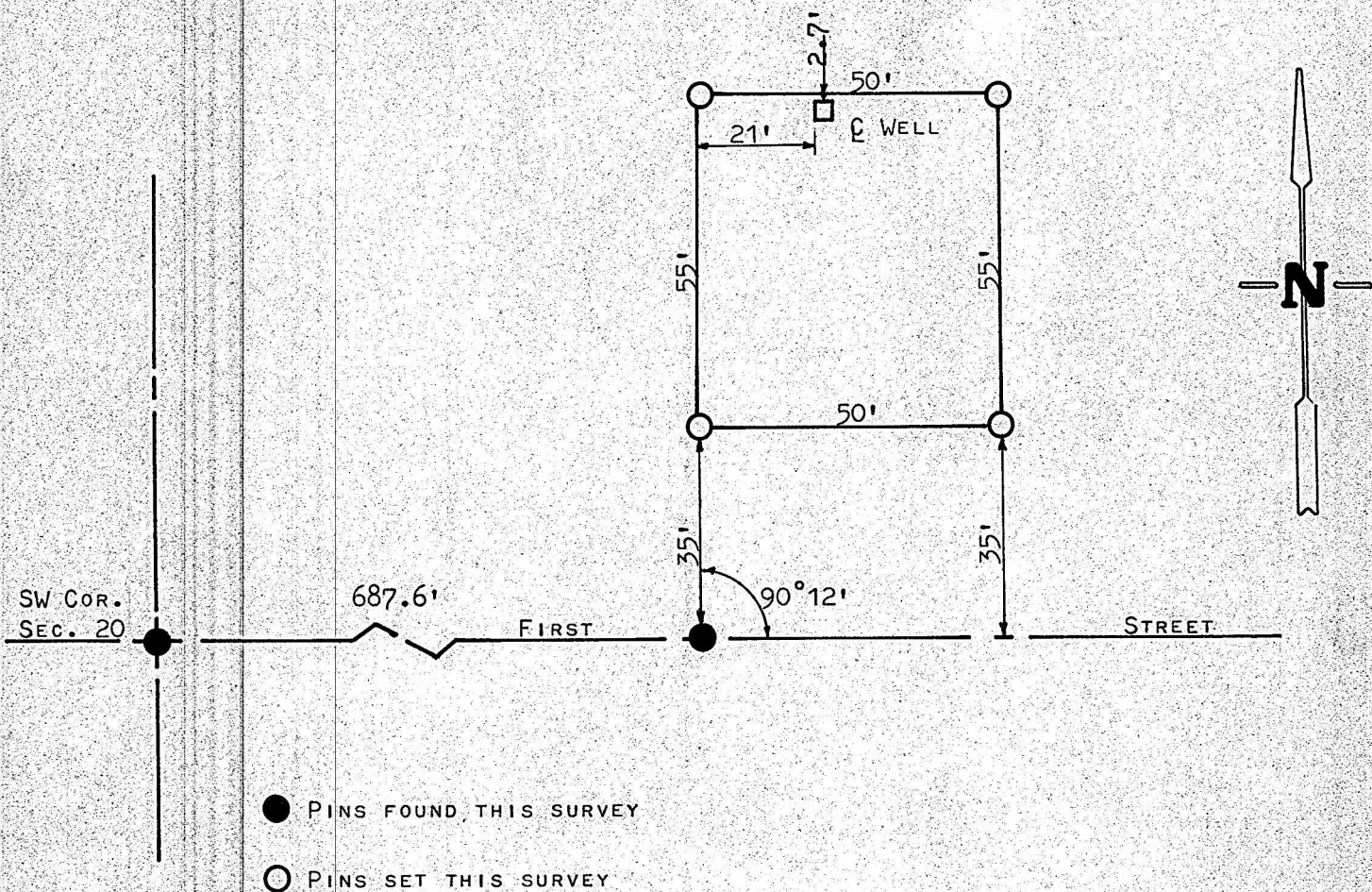


SURVEY A TRACT OF LAND IN THE SW1/4  
SECTION 20, T19S - R3W  
McPHERSON COUNTY, KANSAS



STATE OF KANSAS )  
COUNTY OF MCPHERSON)SS

I, FRANCIS RANKIN, COUNTY ENGINEER OF MCPHERSON COUNTY, KANSAS, DO HEREBY CERTIFY THAT UNDER MY SUPERVISION A SURVEY WAS MADE OF A TRACT OF LAND IN THE SW1/4 SECTION 20, T19S - R3W, OF THE 6TH P.M.,

BEGINNING ON SECTION LINE 687.6 FEET EAST OF THE SW CORNER OF SECTION 20, T19S - R3W; THENCE NORTH, AT AN INTERIOR ANGLE OF 90°12', 90 FEET; THENCE EAST, PARALLEL WITH SECTION LINE, 50' FEET; THENCE SOUTH, PARALLEL WITH WEST LINE, 90 FEET; THENCE WEST, ALONG SECTION LINE, 50 FEET TO THE PLACE OF BEGINNING.

AND THE ABOVE PLAT IS A TRUE EXHIBIT OF SAID SURVEY AS FAR AS IT IS KNOWN TO ME.

SURVEY CALLED FOR BY MCPHERSON WATER & ELECTRIC

SIGNED THIS 4 DAY OF FEBRUARY, 1969.

*Francis Rankin*  
FRANCIS RANKIN  
COUNTY ENGINEER  
MCPHERSON COUNTY, KANSAS

789

PROFESSIONAL ENGINEER