

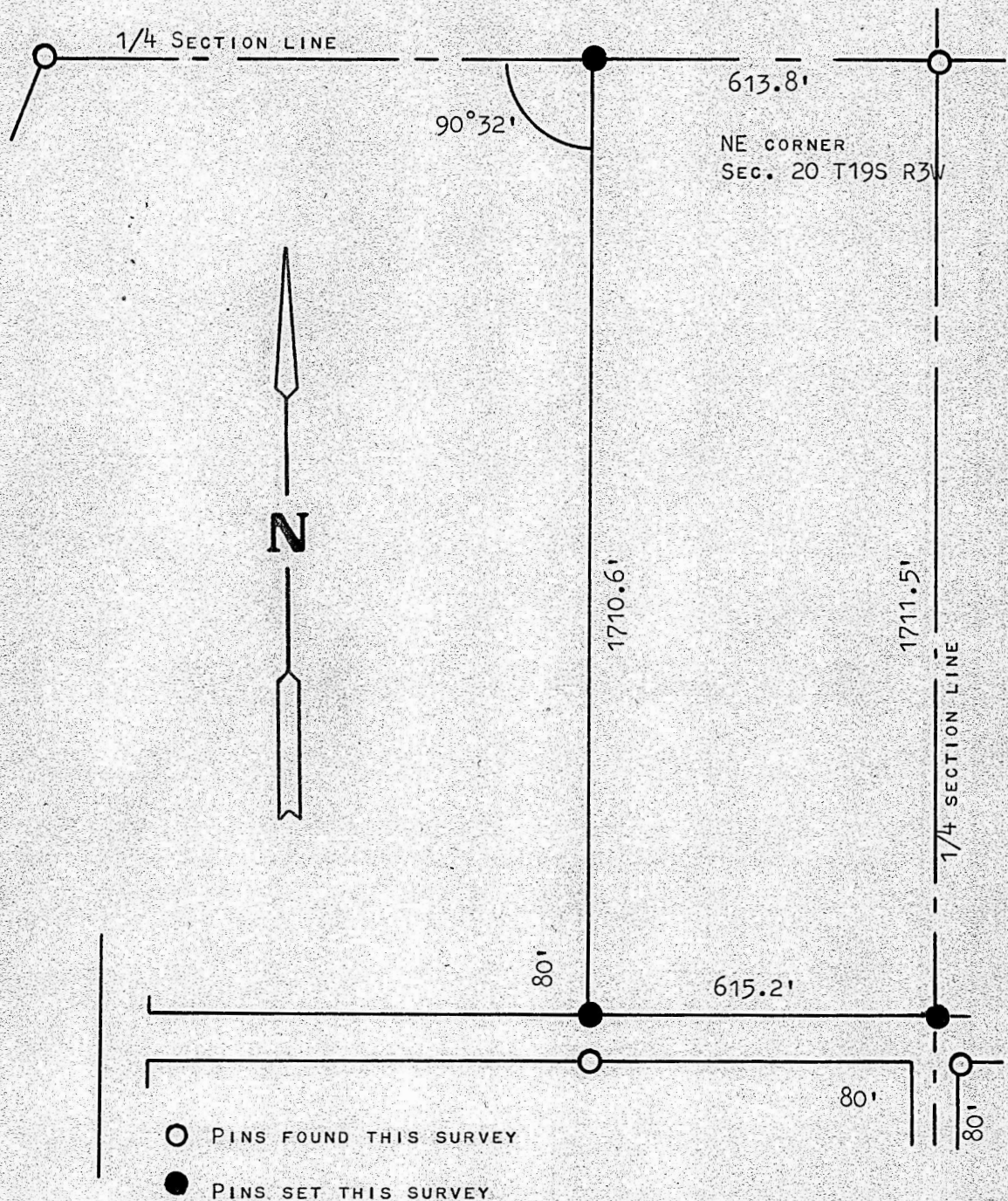
A SURVEY OF A TRACT OF LAND IN THE

SW 1/4 SECTION 20, T19S R3W

MCPHERSON, COUNTY

KANSAS

CENTER OF SECTION 20



STATE OF KANSAS )  
COUNTY OF MCPHERSON ) SS

I, FRANCIS RANKIN, PROFESSIONAL ENGINEER OF THE STATE OF KANSAS DO HERBY CERTIFY THAT UNDER MY SUPERVISION A SURVEY WAS MADE IN THE SW 1/4, SECTION 20 T19S R3W OF THE 6TH P.M. AND DESCRIBED AS FOLLOWS:

BEGINNING AT THE NE CORNER OF THE SW 1/4 OF SAID SECTION 20, T19S R3W; THENCE SOUTH ON 1/4 SECTION LINE 1711.5 FEET; THENCE WEST 615.2 FEET TO A POINT 1710.6 FEET SOUTH OF THE 1/4 SECTION LINE; THENCE NORTH TO 1/4 SECTION LINE 1710.6 FEET; THENCE EAST ON 1/4 SECTION LINE 613.8 FEET TO PLACE OF BEGINNING, SAID TRACT OF LAND CONTAINS 24.1 ACRES MORE OR LESS, AND THAT THE ACCOMPANYING PLAT IS A TRUE EXHIBIT OF SAID SURVEY AS FAR AS IT IS KNOWN TO ME.

SURVEY CALLED FOR BY CHAMBER OF COMMERCE

SIGNED THIS 7 DAY OF JUNE, 1967

FRANCIS RANKIN  
PROFESSIONAL ENGINEER  
MCPHERSON, KANSAS

