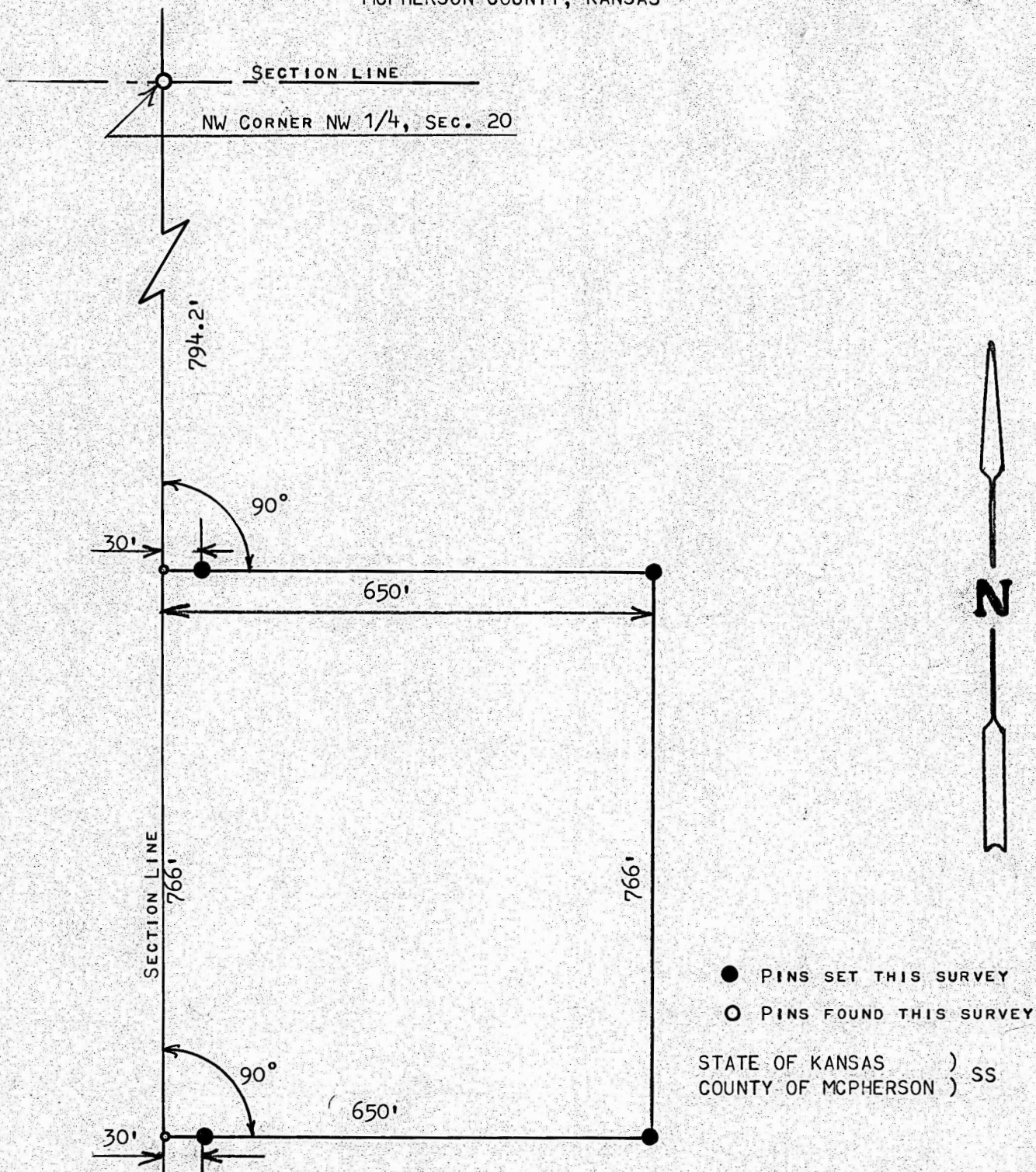


A SURVEY OR A TRACT OF LAND IN THE  
NW 1/4, SECTION 20, T19S, R2W  
MCIPHERSON COUNTY, KANSAS



I, MELVIN FERGUSON, PROFESSIONAL ENGINEER OF THE STATE OF KANSAS DO HERBY CERTIFY THAT UNDER MY SUPERVISION A SURVEY WAS MADE OF TRACT OF LAND IN THE NW1/4, SECTION 20, T19S, R2W OF THE 6TH P.M. AND DESCRIBED AS FOLLOWS;  
BEGINNING AT A POINT 794.2 FEET SOUTH OF THE NW CORNER OF THE SAID NW1/4, SECTION 20, T19S, R2W; THENCE EAST RIGHT ANGLE OF SECTION LINE 650 FEET; THENCE SOUTH PARALLEL WITH SECTION LINE 766.0 FEET; THENCE WEST 650 FEET TO SECTION LINE; THENCE NORTH ON SECTION LINE 766.0 FEET, TO PLACE OF BEGINNING SAID TRACT OF LAND CONTAINS 11.4 ACRES MORE OR LESS, AND THAT THE ACCOMPANYING PLAT IS A TRUE EXHIBIT OF SAID SURVEY AS FAR AS IT IS KNOWN TO ME.

SURVEY CALLED FOR BY HARVEY KOEHN

SIGNED THIS 2nd DAY OF SEPTEMBER, 1975

Melvin Ferguson  
MELVIN FERGUSON  
PROFESSIONAL ENGINEER  
MCIPHERSON, KANSAS

MELVIN V. FERGUSON  
LICENSED  
6772  
KANSAS  
PROFESSIONAL ENGINEER