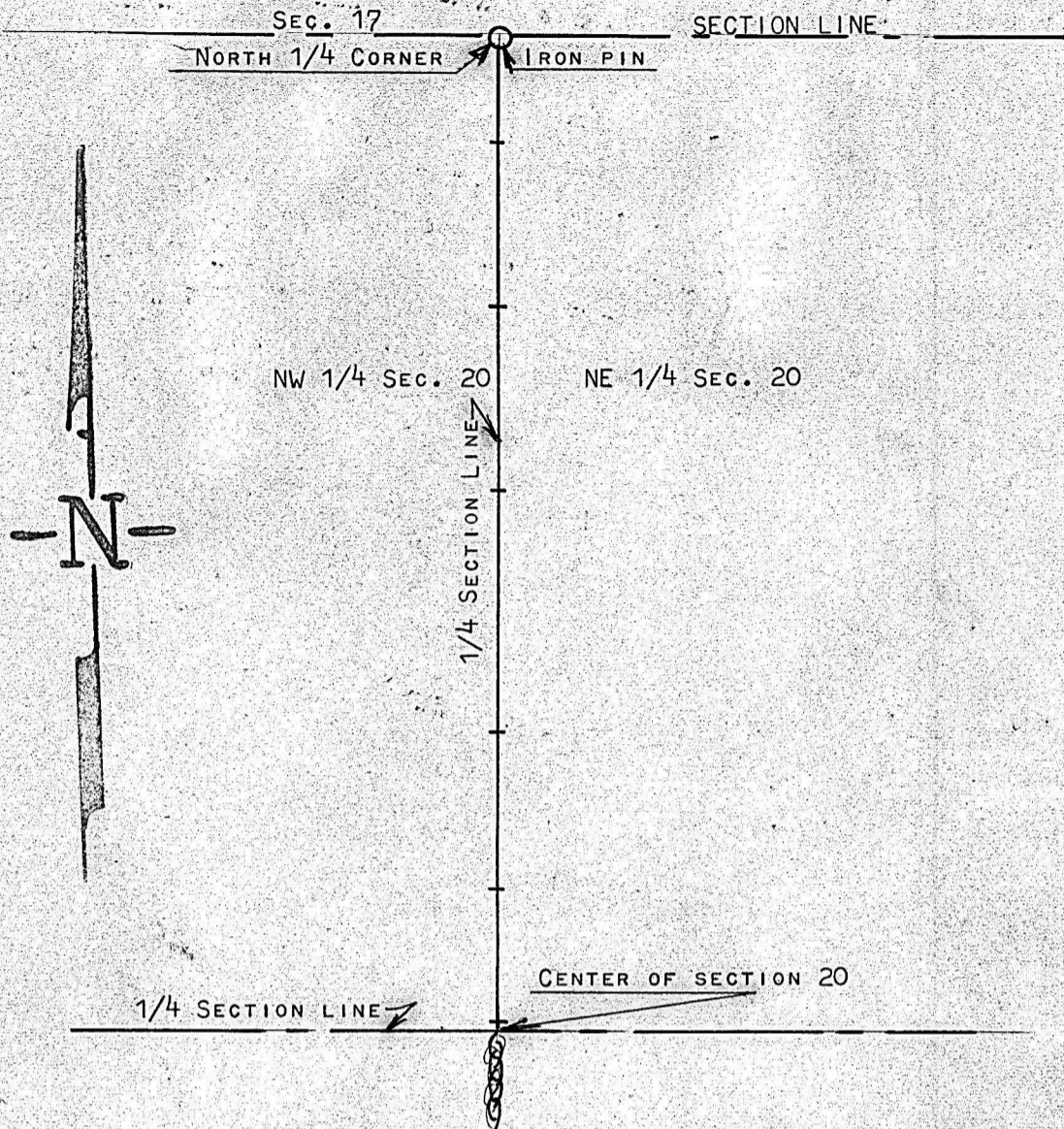


A SURVEY OF THE NORTH 1/4
SECTION LINE SECTION 20
T18S, R3W McPHERSON
COUNTY



STATE OF KANSAS)
COUNTY OF MCPHERSON) SS

I, FRANCIS RANKIN, PROFESSIONAL ENGINEER OF THE STATE OF KANSAS
DO HERBY CERTIFY THAT UNDER MY SUPERVISION A SURVEY WAS MADE TO
DETERMINE THE 1/4 SECTION LINE BETWEEN NW1/4 & NE1/4 OF SECTION 20
T18S, R3W OF THE 6TH P.M., AND THAT THE ACCOMPANYING PLAT IS A TRUE
EXHIBIT OF SAID SURVEY AS FAR AS IT IS KNOWN TO ME.

SURVEY CALLED FOR BY DARRELL THOMPSON

SIGNED THIS 11 DAY OF NOVEMBER, 1966

