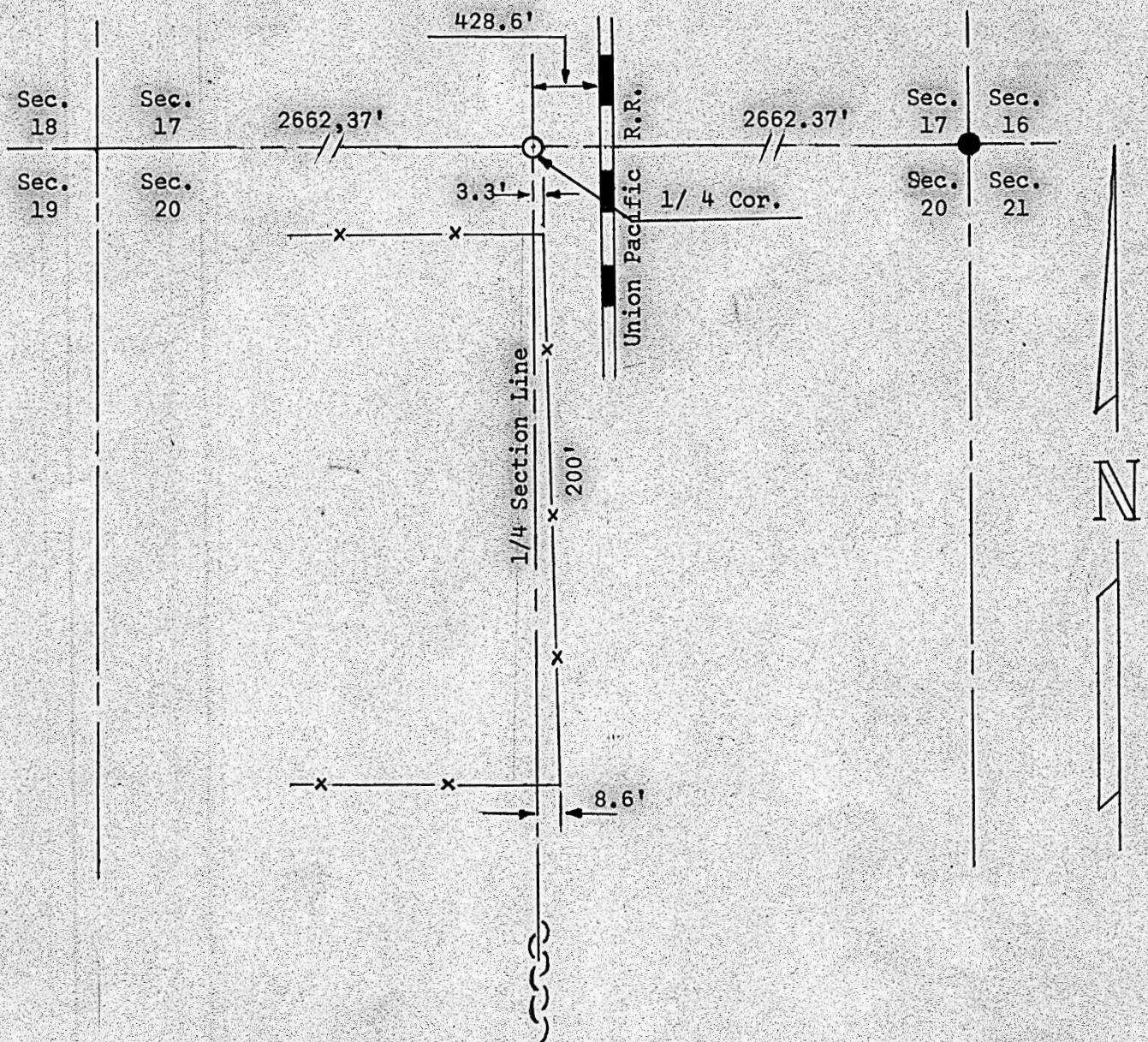


A SURVEY TO ESTABLISH 1/4 CORNER BETWEEN
SECTION 17 & 20, T18S, R3W



- Pin Found This Survey
- Pin Set This Survey

State of Kansas)
County of McPherson) SS

I, Francis Rankin, County Engineer of McPherson County, Kansas, do hereby certify that I did cause to be done on the 29th day of August, 1962, a survey to establish the quarter corner between Section 17 & 20, T18S, R3W of the sixth principal meridian, and that the accompanying plat is a true exhibit of said survey as far as it is known to me.

August 31, 1962

Francis R. Rankin
Francis R. Rankin
County Engineer
McPherson County



MICROFILM

MICROFILM