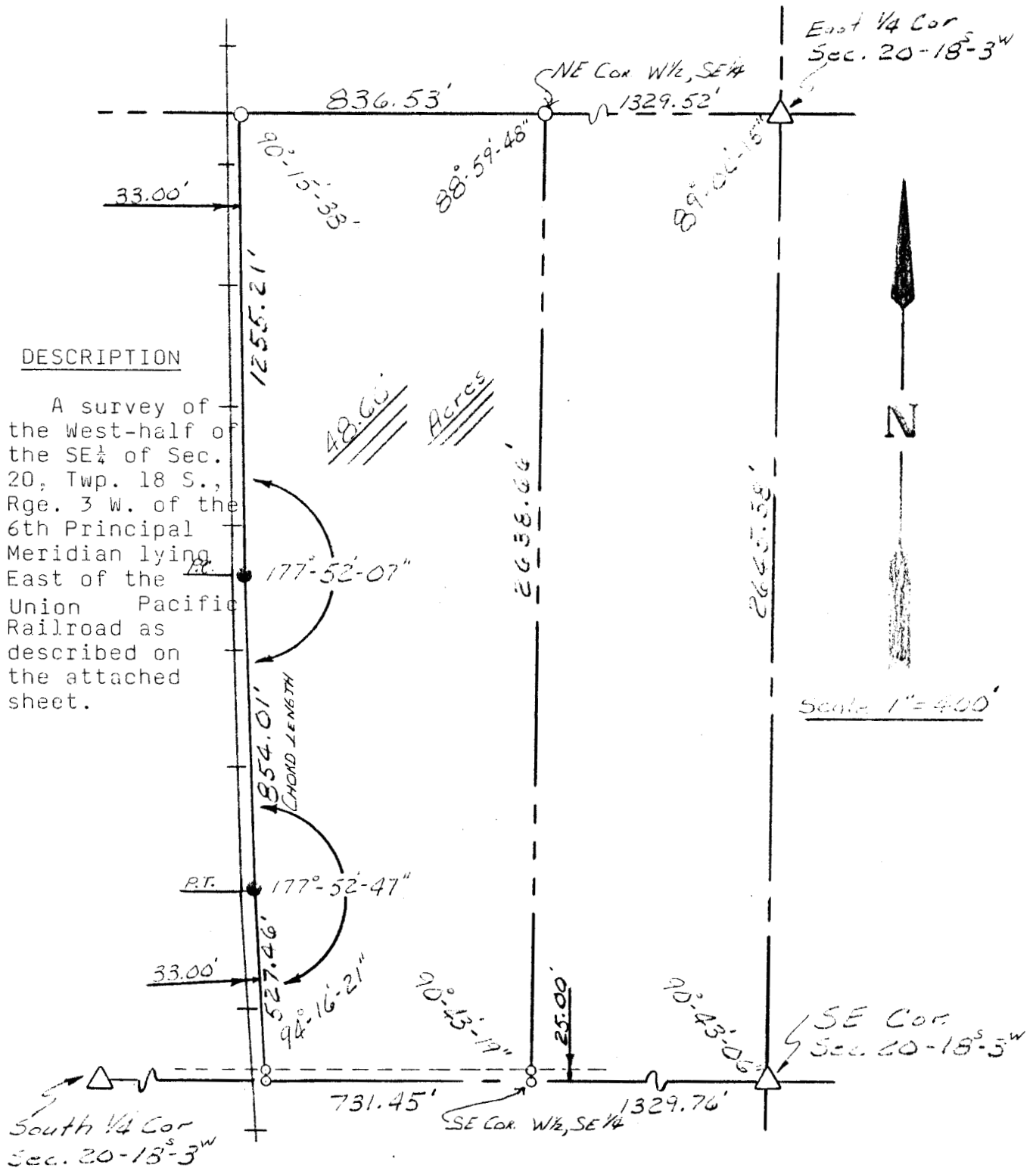


# Garber Surveying Service, P.A.

217 East 1st, Suite 16 Hutchinson, KS 67501

Proj. No. G84-431

Survey for: Galen Swisher



## E.R.R. Curve Data

R = 11459.16  
D = 0°-30'-00"  
Δ = 4°-17'-00"  
L = 356.70'  
T = 428.55

## Legend

- Bars Found
- Bars Set
- △ Section Corner

## SURVEYOR'S CERTIFICATE

I hereby certify this plat to be a true, correct and complete representation of the property described above and on the attached sheet, as surveyed under my supervision, this 17th day of January, 1985.

Daniel E. Garber  
Daniel E. Garber, RLS 683

