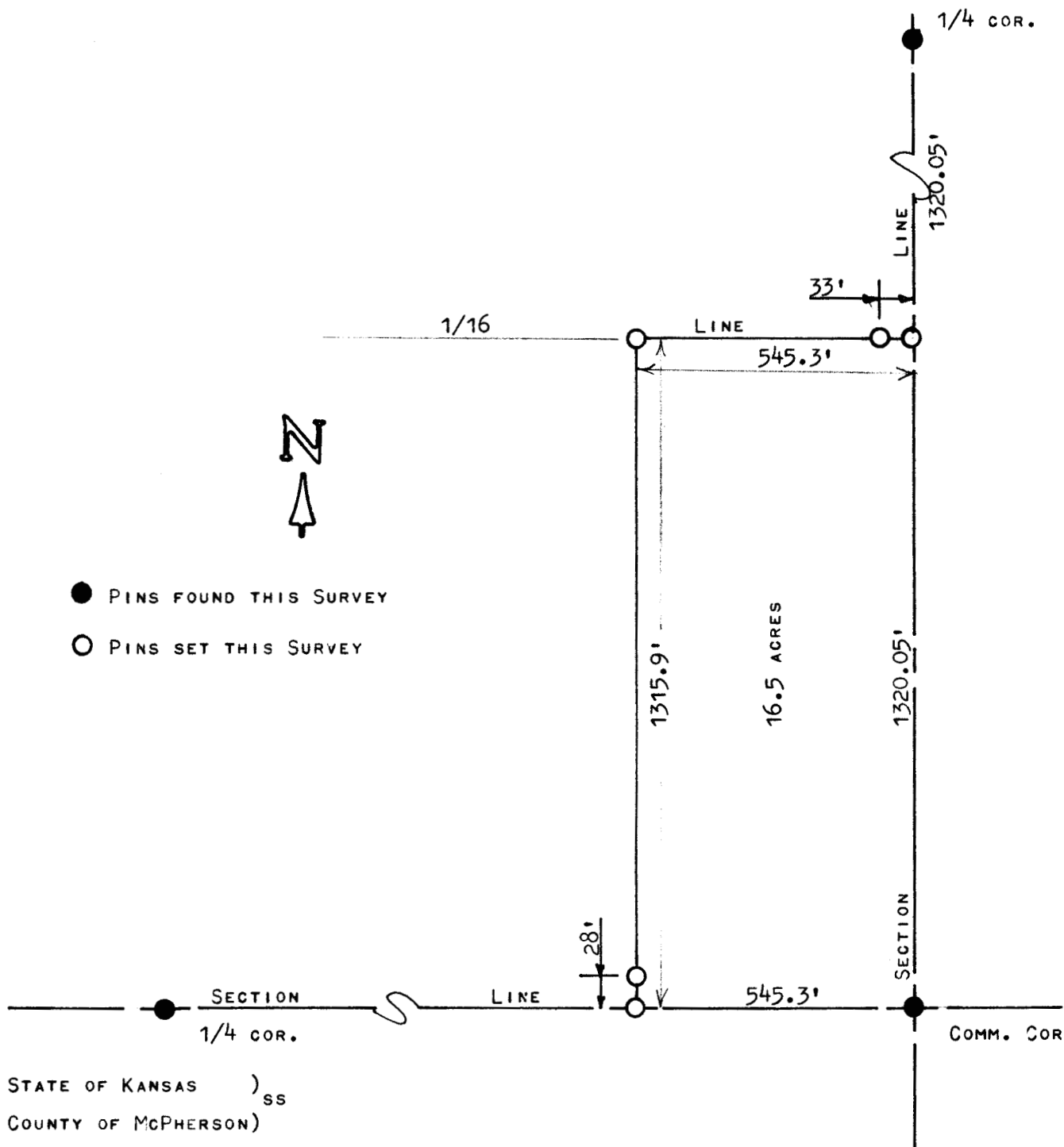


A SURVEY IN THE S1/2, SE1/4 OF
SECTION 20, T17S-R4W



I, FRANCIS RANKIN, COUNTY ENGINEER OF MCPHERSON COUNTY, KANSAS, DO HEREBY CERTIFY THAT UNDER MY SUPERVISION A SURVEY WAS MADE OF THE EAST 16.5 ACRES IN THE S1/2, SE1/4, SECTION 20, T17S-R4W OF THE 6TH P. M. AND THAT THE ABOVE PLAT IS A TRUE EXHIBIT OF SAID SURVEY AS FAR AS IT IS KNOWN TO ME.

SURVEY CALLED FOR BY WENDELL DAHLSTEN.

SIGNED THIS 20 DAY OF JANUARY, 1970.

F. R. RANKIN
COUNTY ENGINEER
MCPHERSON CO., KANSAS



RECEIVED