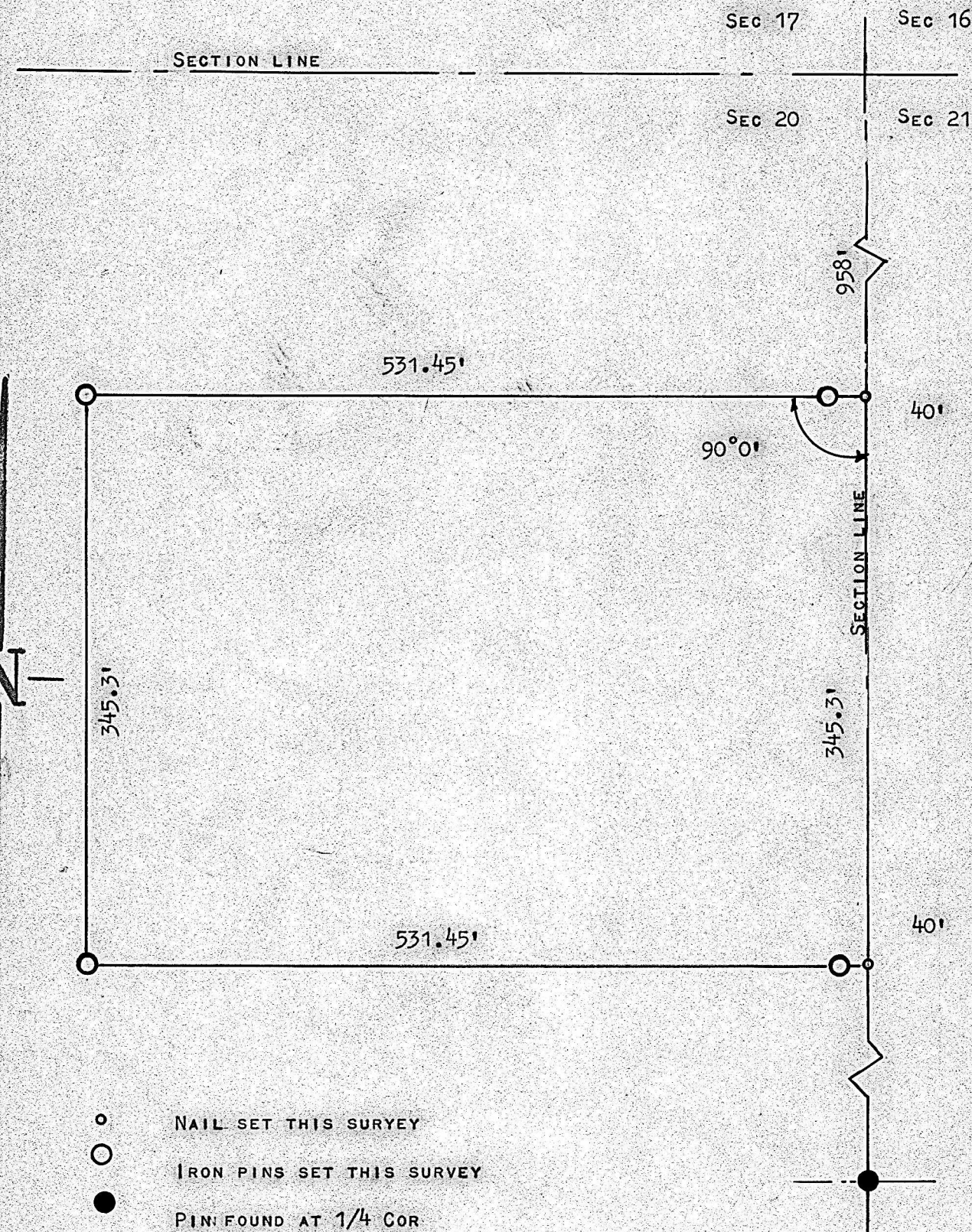


A SURVEY IN THE NE 1/4
SECTION 20 T17S R4W



STATE OF KANSAS)
COUNTY OF McPHERSON) SS

I FRANCIS R. RANKIN, PROFESSIONAL ENGINEER OF THE STATE OF KANSAS DO HEREBY CERTIFY THAT UNDER MY SUPERVISION A SURVEY WAS MADE IN THE NE 1/4 SECTION 20 T17S R4W OF THE 6TH. P.M. AND DESCRIBED AS FOLLOWS:

BEGINNING AT A POINT 958 FEET SOUTH OF THE NE CORNER OF THE NE 1/4 OF SAID SECTION; THENCE WEST AT 90°0' 531.45 FEET; THENCE SOUTH PARALLEL WITH EAST SECTION LINE 345.3 FEET; THENCE EAST TO SECTION LINE 531.45 FEET; THENCE NORTH 345.3 FEET TO PLACE OF BEGINNING, SAID TRACT OF LAND CONTAINS 4.21 ACRES MORE OR LESS, AND THAT THE ACCOMPANYING PLAT IS A TRUE EXHIBIT OF SAID SURVEY AS FAR AS IT IS KNOWN TO ME.

SURVEY CALLED FOR BY WENDELL DAHLSTEN

SIGNED THIS 3 DAY OF July, 1964

Francis R. Rankin
FRANCIS RANKIN
PROFESSIONAL ENGINEER
McPHERSON, KANSAS

