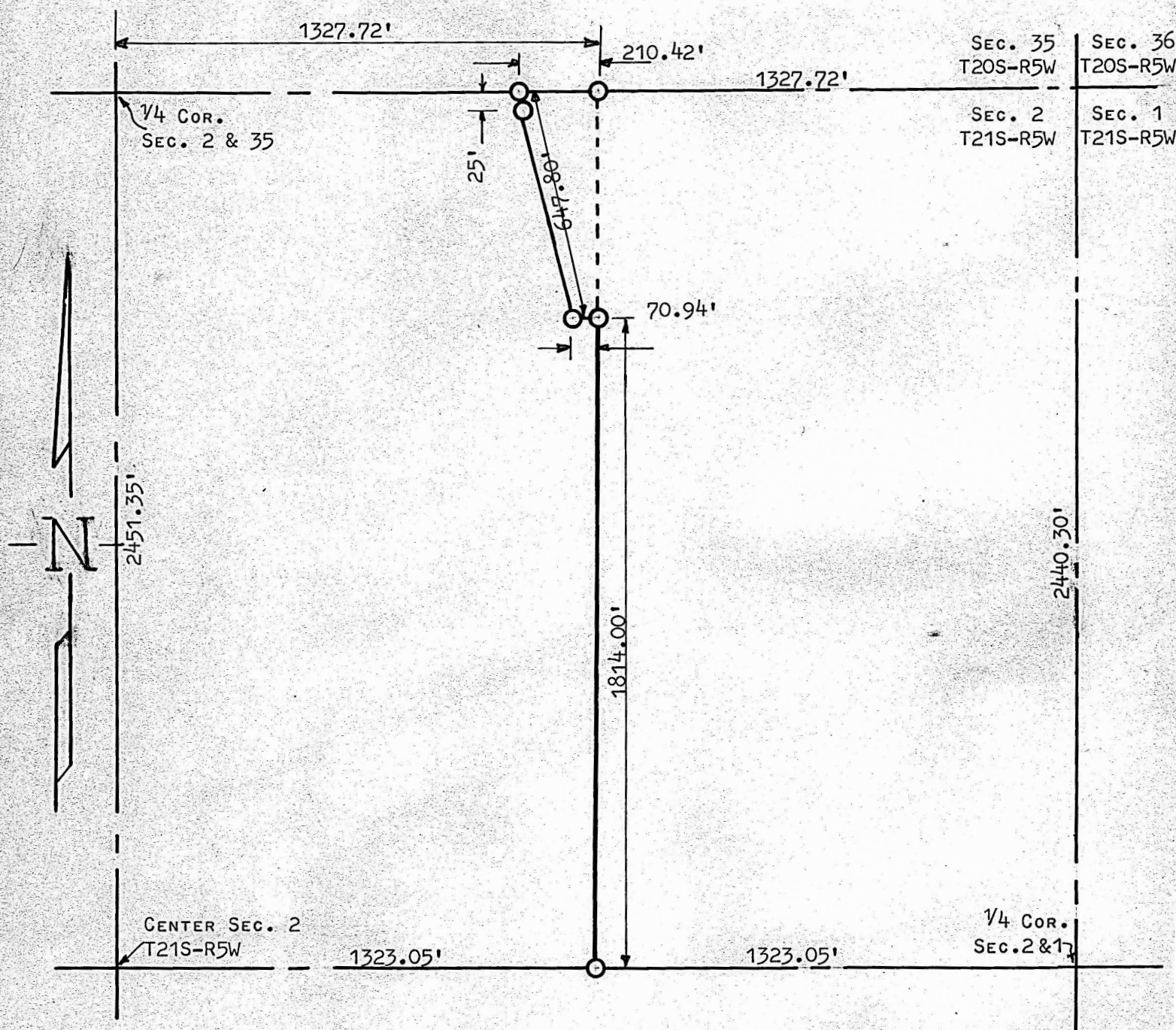


A SURVEY IN THE NE<sup>1</sup>/<sub>4</sub>  
SECTION 2, T21S, R5W



○ PINS SET THIS SURVEY

STATE OF KANSAS )  
COUNTY OF McPHERSON ) SS

I, FRANCIS D. WAGNER, COUNTY ENGINEER OF McPHERSON COUNTY, KANSAS DO HEREBY CERTIFY THAT I DID CAUSE TO BE DONE ON THE 15TH DAY OF JULY, 1960 A SURVEY OF THE E<sup>1</sup>/<sub>2</sub> AND A PART OF THE W<sup>1</sup>/<sub>2</sub> OF SECTION 2, T21S, R5W OF THE 6TH P.M. DESCRIBED AS FOLLOWS:

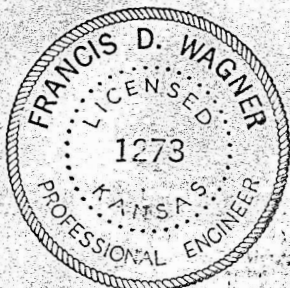
BEGINNING AT THE NE CORNER OF THE E<sup>1</sup>/<sub>2</sub> NE<sup>1</sup>/<sub>4</sub> SECTION 2-T21S-R5W; THENCE SOUTH ON THE SECTION LINE 2440.3' FEET TO THE 1/4 CORNER BETWEEN SEC. 1 & 2; THENCE WEST ON THE 1/4 SECTION LINE 1323.05' FEET TO THE 1/16 LINE; THENCE NORTH ON THE 1/16 LINE 1814.0' FEET; THENCE WEST 70.94' FEET; THENCE N-W 647.8' FEET TO A POINT 210.42' FEET WEST OF THE 1/16 CORNER BETWEEN THE E<sup>1</sup>/<sub>2</sub> W<sup>1</sup>/<sub>2</sub> NE<sup>1</sup>/<sub>4</sub> SECTION 2-T21S-R5W; THENCE EAST 1538.14' FEET TO THE PLACE OF BEGINNING.

AND THAT THE ACCOMPANYING PLAT IS A TRUE EXHIBIT OF SAID SURVEY.

*Francis D. Wagner*

FRANCIS D. WAGNER  
COUNTY ENGINEER  
McPHERSON COUNTY

JULY 18, 1960



MICROFILM