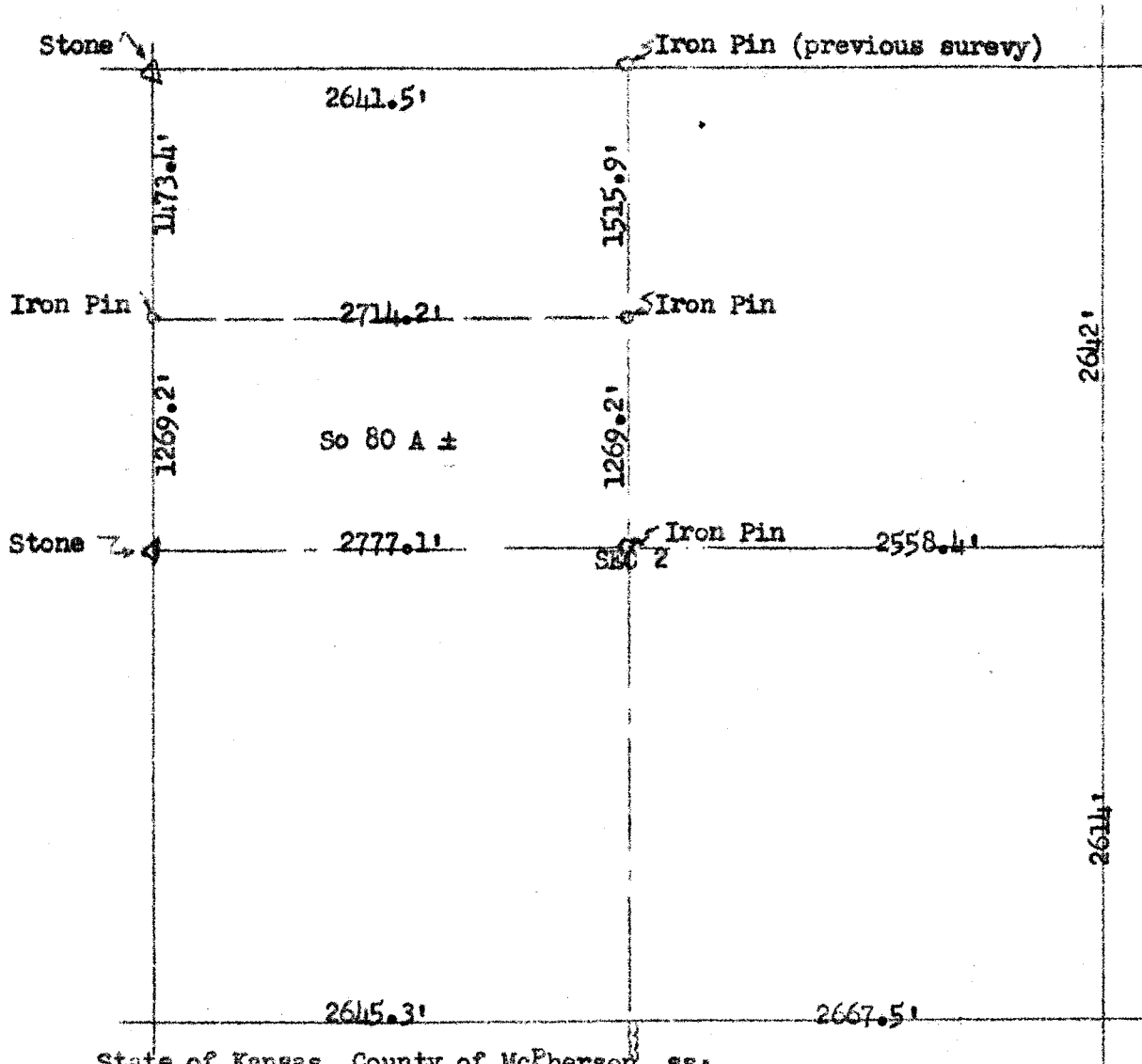


OFFICE OF THE COUNTY ENGINEER

McPherson County
McPherson, Kans

Survey of south 80Ac in the NW 1/4 Sec 2-T 20 S- R 3 W.



State of Kansas, County of McPherson, ss:

I, Francis D Wagner, County Engineer of McPherson County Kansas, do hereby certify that I did cause to be done on the 8th day of February 1952, a survey of the south 80 acres of the NW 1/4 Sec 2-T20S-R3W of the Sixth Principal Meridian and that the accompanying plat is a true and correct exhibit of said survey.

MICROFILM 1

Francis D Wagner
Francis D Wagner
County Engineer
McPherson County