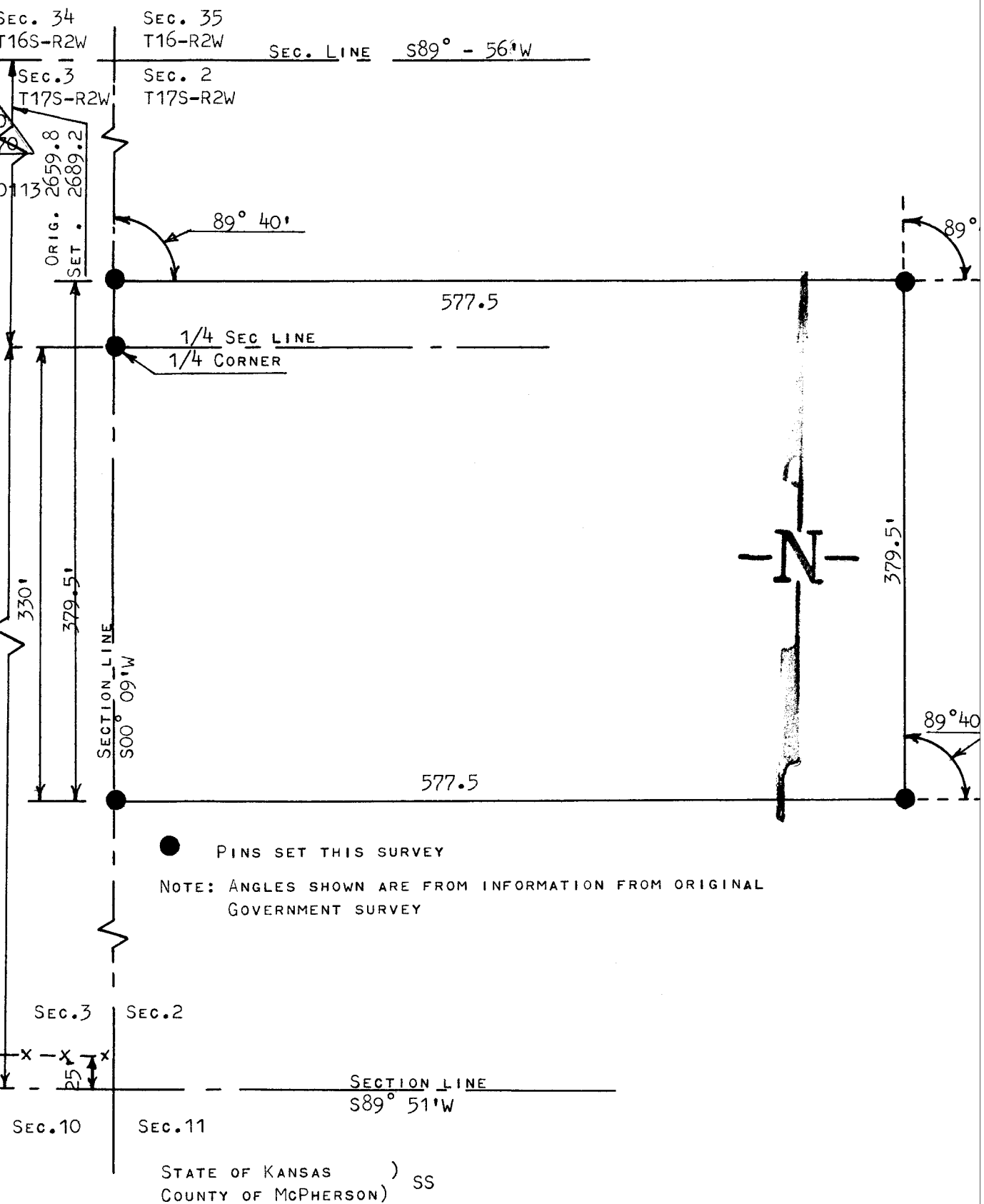


A SURVEY IN THE W1/2 SEC. 2
T17S - R2W



I, FRANCIS R. RANKIN P.E. HERBY CERTIFY THE ABOVE SURVEY WAS
MADE UNDER MY SUPERVISION IN THE W 1/2 OF SECTION 2 T17S-R2W OF THE
6TH P.M. DESCRIBED AS FOLLOWS:

BEGINNING AT THE 1/4 CORNER BETWEEN SECTION 2 & 3 T17S-R2W;
THENCE SOUTH 330 FEET ON SECTION LINE; THENCE EAST AT AN ANGLE OF
89° 40' AND A DISTANCE 577.5 FEET; THENCE NORTH 379.5 FEET; THENCE
WEST 577.5 FEET TO SECTION LINE; THENCE SOUTH 49.5 FEET ON SECTION
LINE TO PLACE OF BEGINNING, AND THAT THE ACCOMPANYING PLAT IS A TRUE
EXHIBIT OF SAID SURVEY AS FAR AS IT IS KNOWN TO ME.

SURVEY CALLED FOR BY *W. Dale Furr*, *Salina, Kansas*
SIGNED THIS 23 DAY OF August 1962



FRANCIS RANKIN
PROFESSIONAL ENGINEER
McPHERSON, KANSAS