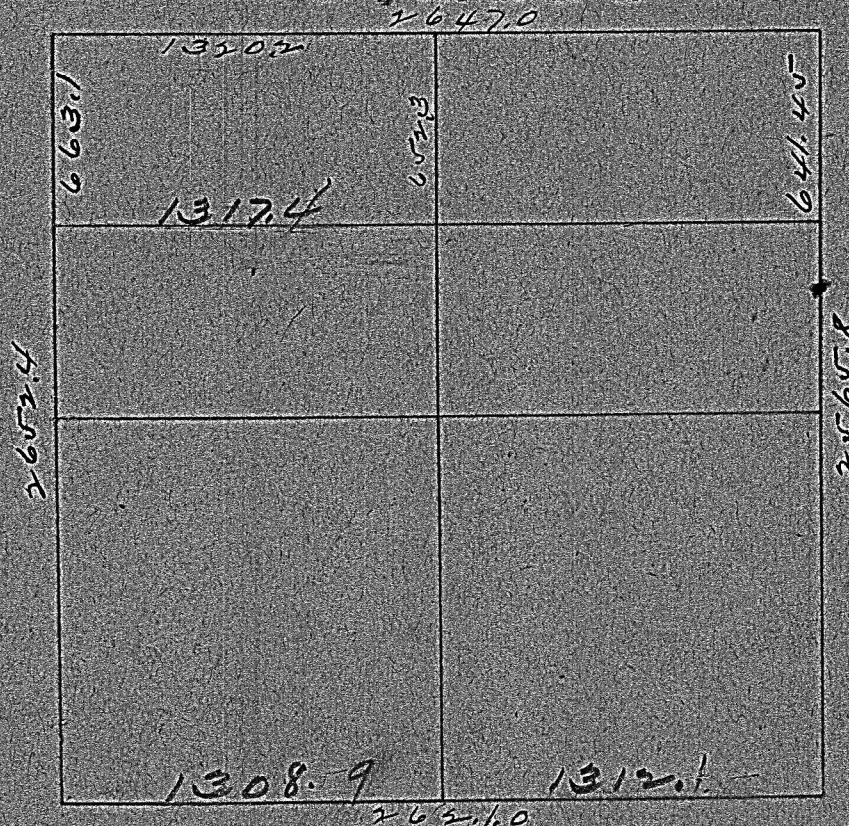


231
NW 1/4 Sec 19-19-4.



The above is a plat of a survey made by me for Pete Goering, Dec. 19, 1939, to locate the south line of the NE, NW, NW, Sec 19-19-4 as shown. As the corner stones were not readily found I took the center of the road on the north side which I found to be fifty feet between hedges. It will be noted that the east side of the quarter is quite short which is shown by the sharp angle in the road at the half mile point.

I was as instructed by you. The SW-SE & NE corners are marked with steel rods with flags at

Guy Hall, County Engineer.

their sides. The SE corner is at the exact location & the other two are in line & in the fence line.

