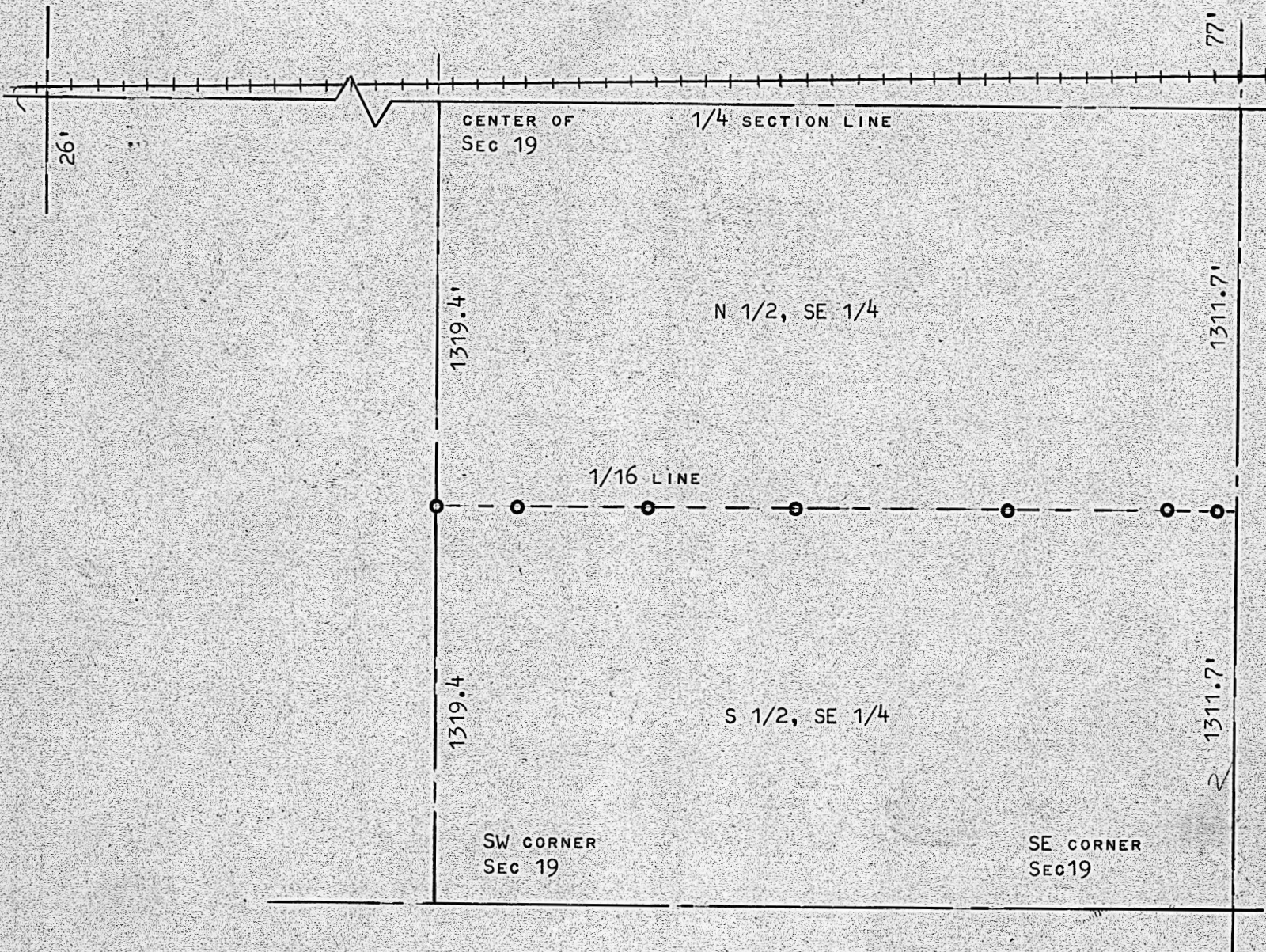


SURVEY TO ESTABLISH PROPERTY LINE  
OF THE N 1/2 AND THE S 1/2 SE 1/4  
SECTION 19, T19S-R2W



• • • SET LINE OF STAKES

STATE OF KANSAS )  
COUNTY OF MCPHERSON ) SS

I, FRANCIS RANKIN, PROFESSIONAL ENGINEER OF THE STATE OF KANSAS DO HEREBY CERTIFY THAT UNDER MY SUPERVISION A SURVEY WAS MADE TO ESTABLISH THE BOUNDARY LINE BETWEEN THE NORTH HALF AND THE SOUTH HALF OF THE SE 1/4 SECTION 19, T19S-R2W OF THE 6TH P.M., AND THAT THE ACCOMPANYING PLAT IS A TRUE EXHIBIT OF SAID SURVEY AS FAR AS IT IS KNOWN TO ME.

SURVEY CALLED FOR BY MRS. MOWBRAY & PANCOST

FIELD NOTES IN BOOK 1 RANGE 2

SIGNED THIS 1st DAY OF APRIL, 1966

*Francis Rankin*  
FRANCIS RANKIN  
PROFESSIONAL ENGINEER  
MCPHERSON, KANSAS



MICROFILM