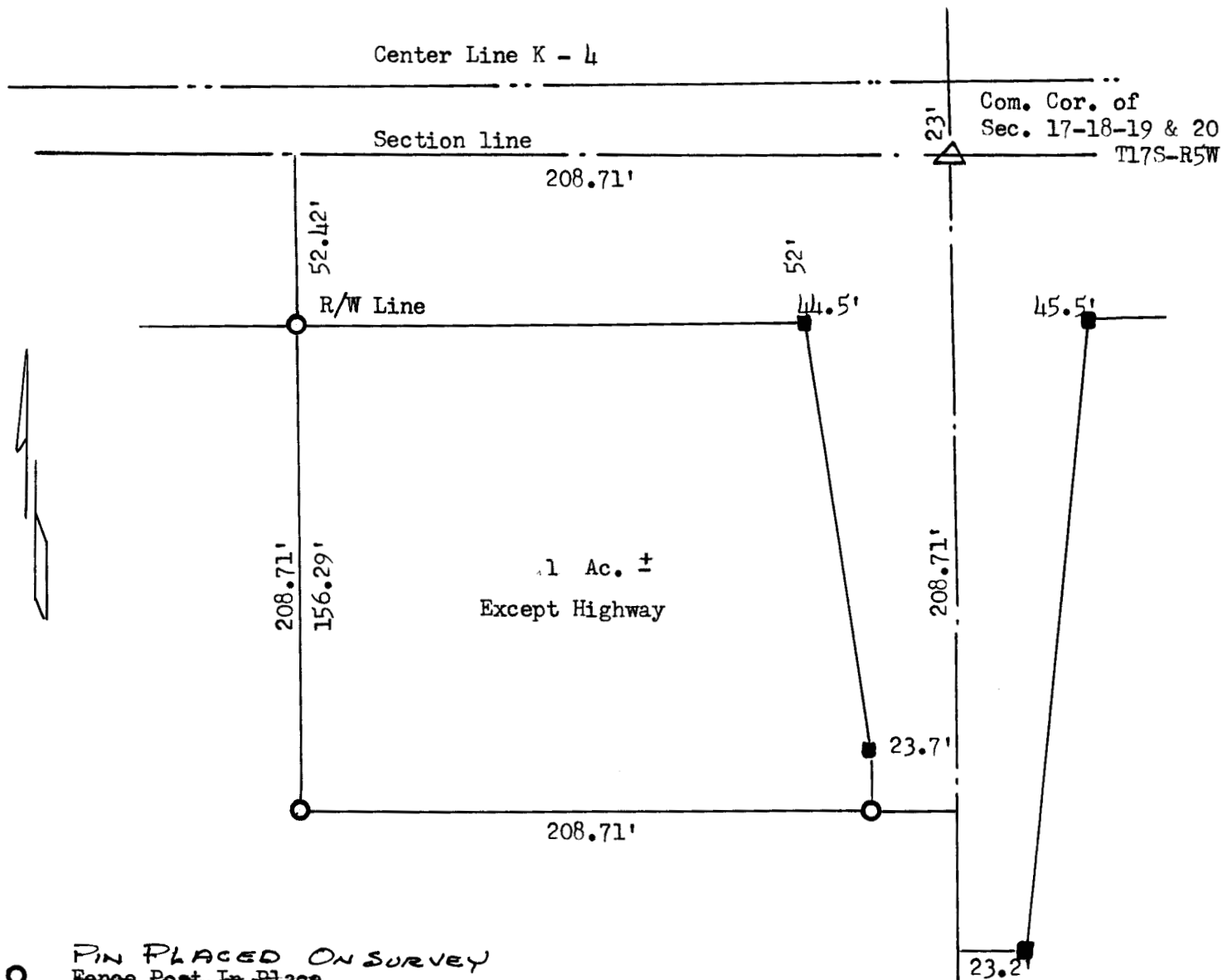


A SURVEY OF A TRACT OF LAND IN THE  
NE 1/4 Sec. 19-T17S-R5W



○ PIN PLACED ON SURVEY  
Fence Post In Place

■ R/W Markers

State of Kansas )  
County of McPherson) SS

I, Francis D. Wagner, County Engineer of McPherson County, Kansas do hereby certify that I did cause to be done on the 21st day of September 1955, a survey to determine the acreage and dimensions for a tract of land in the NE corner of NE quarter of Section 19 - T17S - R5W of the 6th P.M. Described as follows:

Beginning at the Common Corner of Sections 17-18-19 & 20, T17S-R5W, thence west along the section line 208.71 feet, thence South 208.71 feet to a fence post, thence East 208.71 feet to the section line, thence North 208.71 feet to the place of beginning. Tract of land contains approximately 1 square acre.  $\pm$

and that the accompanying plat is a true exhibit of said Survey.

September 21, 1955

*Francis D. Wagner*

Francis D. Wagner  
County Engineer

MICROFILM