

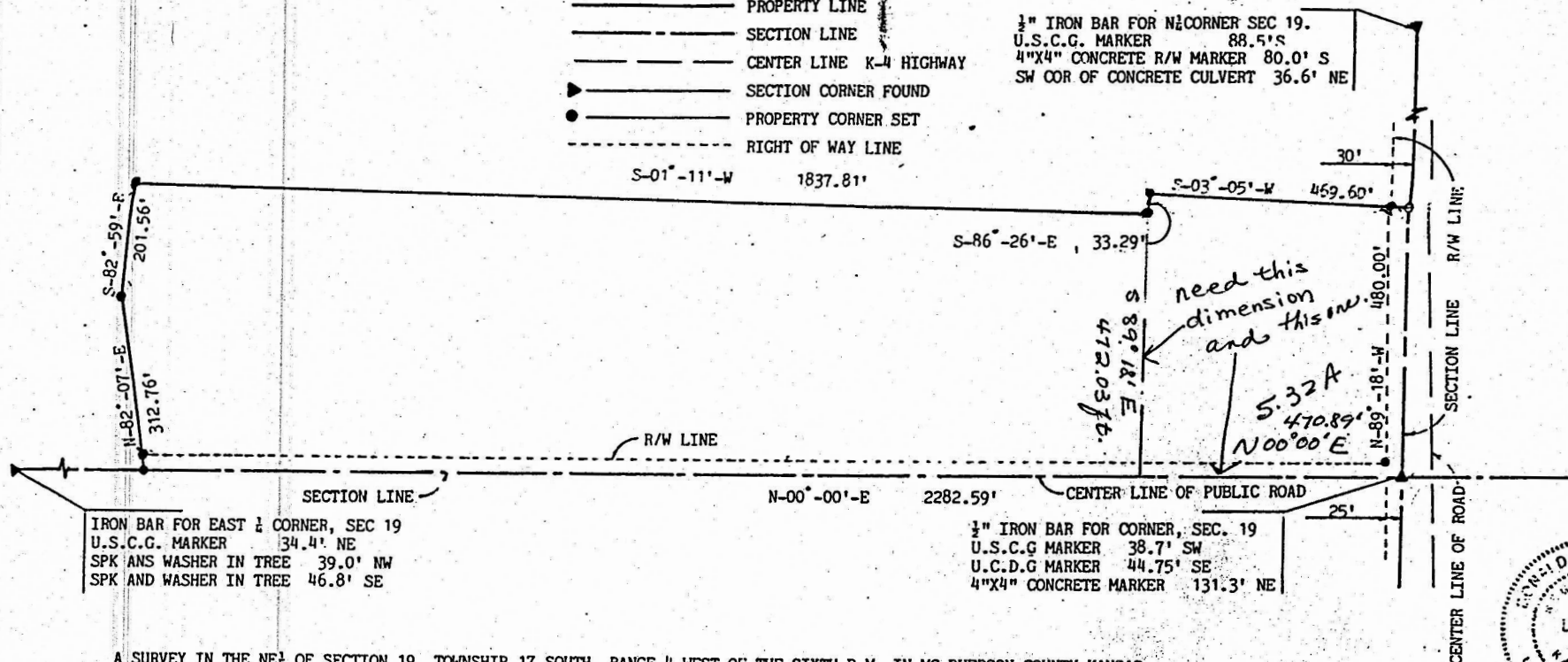
SURVEYORS CERTIFICATE



1"=200'

- PROPERTY LINE
- - - - - SECTION LINE
- - - - - CENTER LINE K-4 HIGHWAY
- ▶ ——— SECTION CORNER FOUND
- ——— PROPERTY CORNER SET
- - - - - RIGHT OF WAY LINE

1" IRON BAR FOR N¹/₂ CORNER SEC 19.
 U.S.C.G. MARKER 88.5' S
 4"X4" CONCRETE R/W MARKER 80.0' S
 SW COR OF CONCRETE CULVERT 36.6' NE



IRON BAR FOR EAST ¹/₂ CORNER, SEC 19
 U.S.C.G. MARKER 34.4' NE
 SPK AND WASHER IN TREE 39.0' NW
 SPK AND WASHER IN TREE 46.8' SE

1" IRON BAR FOR CORNER, SEC. 19
 U.S.C.G. MARKER 38.7' SW
 U.C.D.G. MARKER 44.75' SE
 4"X4" CONCRETE MARKER 131.3' NE

A SURVEY IN THE NE¹/₄ OF SECTION 19, TOWNSHIP 17 SOUTH, RANGE 4 WEST OF THE SIXTH P.M. IN MC PHERSON COUNTY KANSAS, DESCRIBED AS FOLLOWS: BEGINNING AT THE NORTHEAST CORNER OF SAID SECTION 19, THENCE N-89°-18'-W, ALONG THE NORTH LINE OF SAID SECTION 19, A DISTANCE OF 480.00 FEET, THENCE S-03°-05'-W, A DISTANCE OF 459.60 FEET, THENCE S-86°-26'-E, A DISTANCE OF 33.29 FEET, THENCE S-01°-11'-W, A DISTANCE OF 1837.81 FEET, THENCE S-82°-59'-E, A DISTANCE OF 201.56 FEET, THENCE N-82°-07'-E, A DISTANCE OF 312.76 FEET, TO THE EAST LINE OF SAID SECTION 19, THENCE N-00°-00'-E ALONG THE EAST LINE OF SAID SECTION 19, A DISTANCE OF 2282.59 FEET TO THE POINT OF BEGINNING, CONTAINING 26.5 ACRES MORE OR LESS.

D. W. BASSETT
 133 MILLVIEW ROAD
 SALINA, KANSAS 67401
 (913) 825-3058

D. W. Bassett
 SURVEYOR 10/12/89