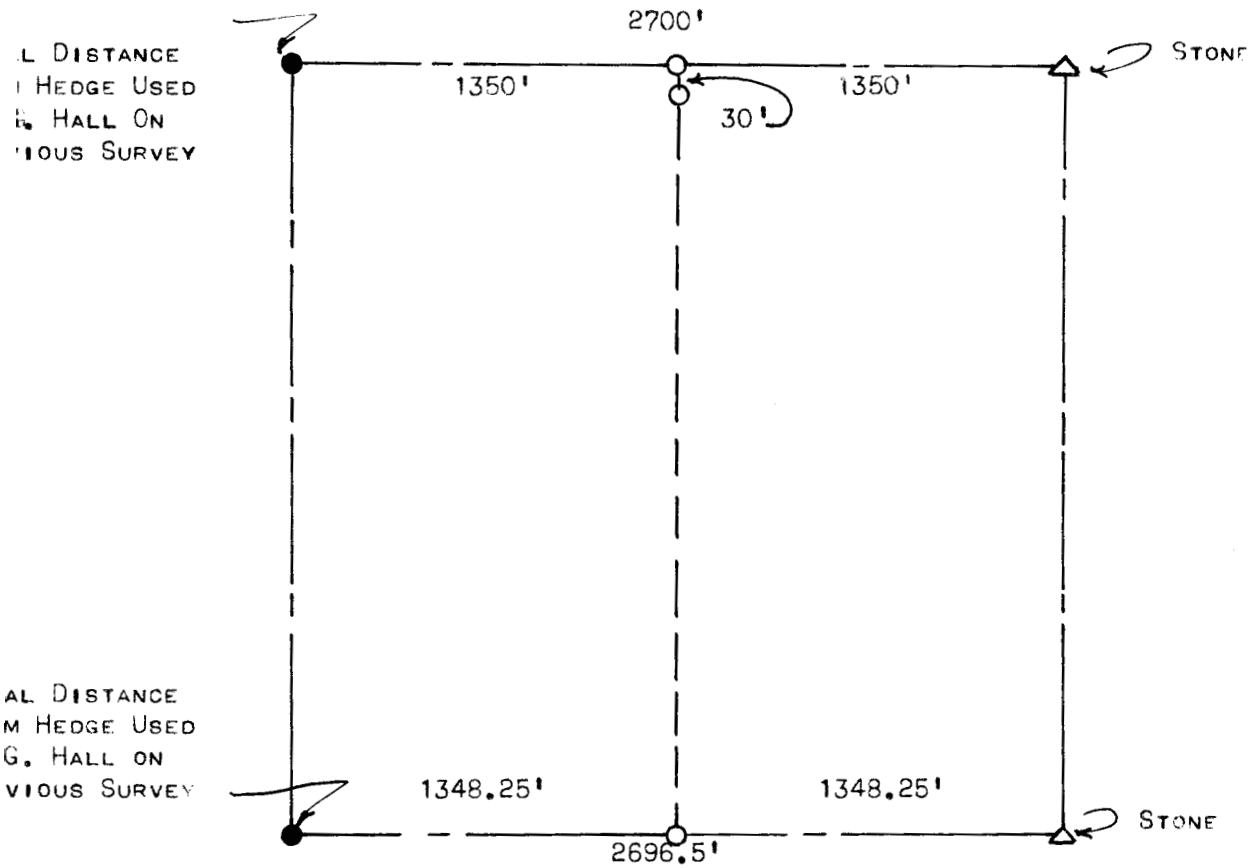


SURVEY IN THE NW $\frac{1}{4}$  OF SECTION

18, T21S, R1W



O PINE SET ON SURVEY

STATE OF KANSAS )  
COUNTY OF MCPHERSON) SS

I, FRANCIS D. WAGNER, COUNTY ENGINEER OF MCPHERSON COUNTY, KANSAS, DO HEREBY CERTIFY THAT I DID CAUSE TO BE DONE ON THE 9TH DAY OF JULY, 1956, A SURVEY TO DETERMINE THE PROPERTY LINE BETWEEN THE EAST HALF AND THE WEST HALF OF THE NORTHWEST QUARTER OF SECTION 18, T21S, R1W OF THE 6TH P.M. AND THAT THE ACCOMPANYING PLAT IS A TRUE EXHIBIT OF SAID SURVEY.

10 JULY, 1956

*Francis D. Wagner*

FRANCIS D. WAGNER  
COUNTY ENGINEER  
MCPHERSON COUNTY