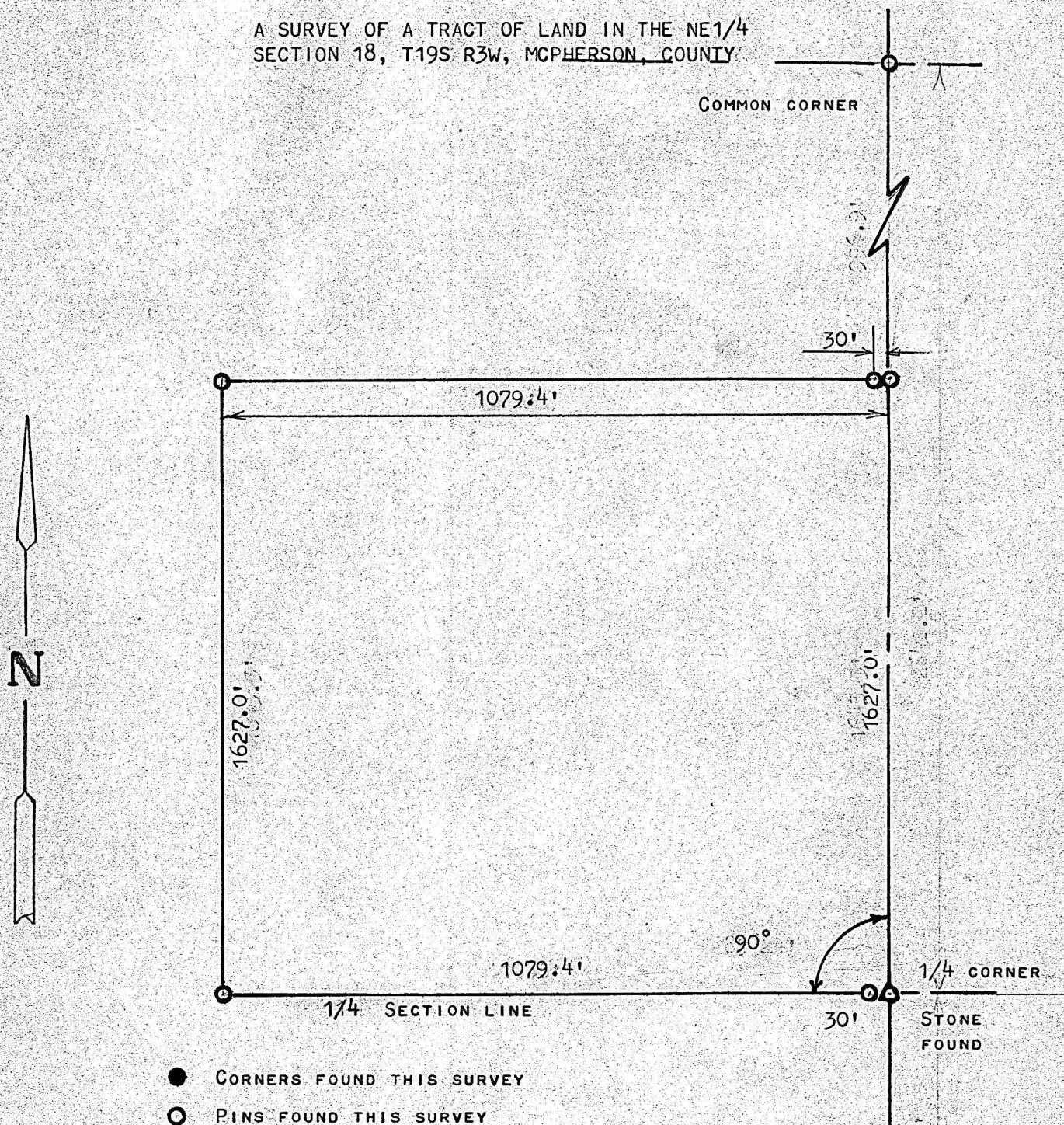


A SURVEY OF A TRACT OF LAND IN THE NE1/4
SECTION 18, T19S R3W, MCPHERSON, COUNTY



STATE OF KANSAS)
COUNTY OF MCPHERSON) SS

I, FRANCIS RANKIN, PROFESSIONAL ENGINEER OF THE STATE OF KANSAS
DO HEREBY CERTIFY THAT UNDER MY SUPERVISION A SURVEY
OF A TRACT OF LAND WAS MADE IN THE NE1/4, SECTION 18, T19S R3W
OF THE 6TH P.M. AND DESCRIBED AS FOLLOWS;
BEGINNING AT THE SE CORNER OF THE NE1/4, SECTION 18, T19S R3W;
THENCE WEST ON 1/4 SECTION LINE 1079.4'; THENCE NORTH PARALLEL
WITH SECTION LINE 1627.0 FEET; THENCE EAST PARALLEL WITH 1/4 SECTION
LINE 1079.4'; THENCE SOUTH ON SECTION LINE 1627.0 FEET; TO PLACE OF
BEGINNING SAID TRACT OF LAND CONTAINS 40.3 ACRES MORE OR LESS, AND
THAT THE ACCOMPANYING PLAT IS A TRUE EXHIBIT OF SAID SURVEY AS FAR AS
IT IS KNOWN TO ME.

SURVEY CALLED FOR DON BROWN

SIGNED THIS 16 DAY OF SEPTEMBER, 1969

Francis Rankin
FRANCIS RANKIN
PROFESSIONAL ENGINEER
MCPHERSON, KANSAS
799
KANSAS
PROFESSIONAL ENGINEER