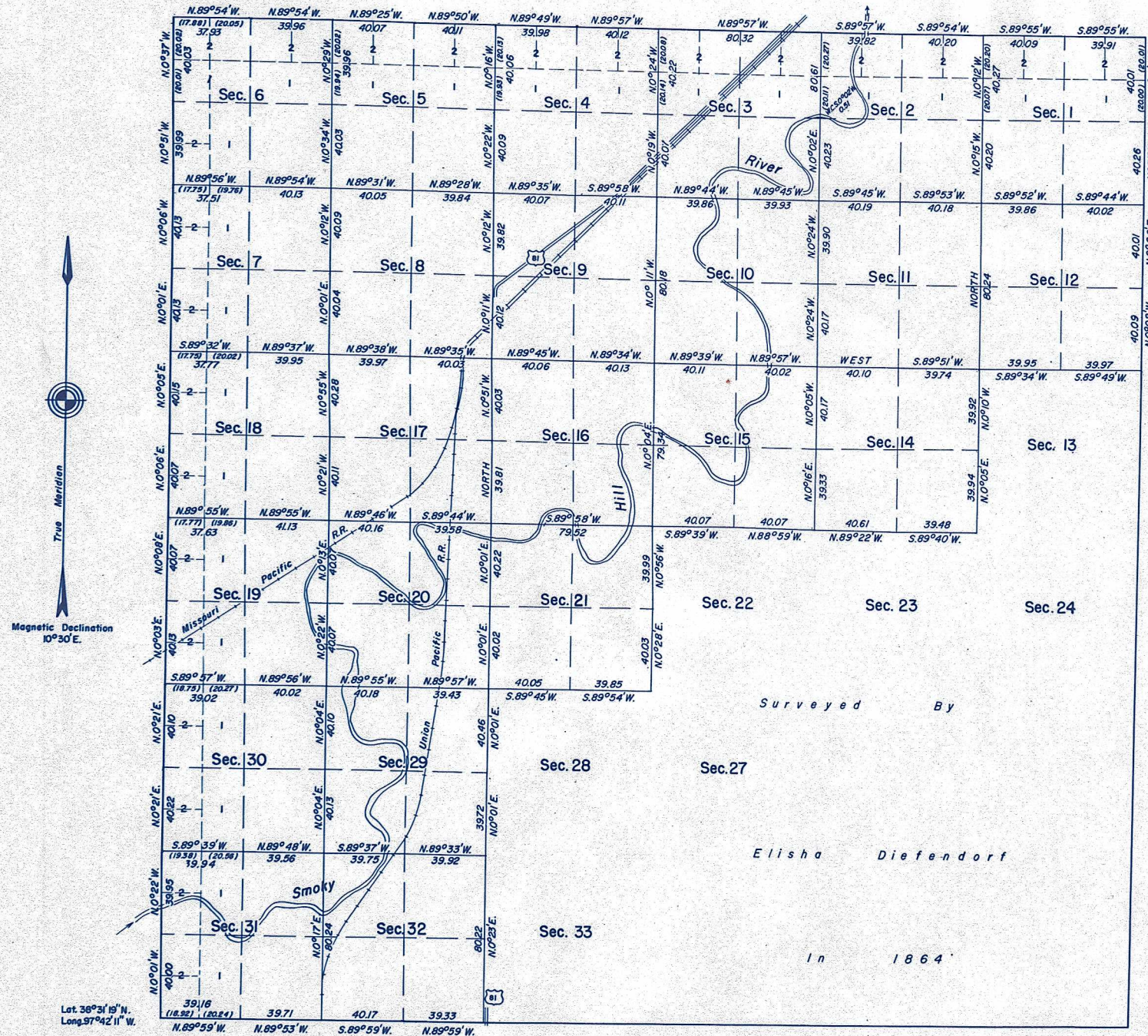


TOWNSHIP 17 SOUTH, RANGE 3 WEST OF THE SIXTH PRINCIPAL MERIDIAN, KANSAS

DEPENDENT RESURVEY



This plat represents a resurvey of the North and West boundaries, a portion of the South and East boundaries, and a portion of the Subdivisional Lines of T. 17 S., R. 3 W. of the Sixth Principal Meridian, Kansas, designed to restore the corners in their original locations according to the best available evidence. The lottings and areas are as shown upon the plat of the survey approved February 11, 1865.

The history of the earlier surveys is set forth in the field note record.

As shown hereon, the North and West boundaries, a portion of the South and East boundaries, and a portion of the Subdivisional Lines were resurveyed by Allan E. Arnold, September 6 to October 5, 1955, under Special Instructions dated April 14, 1955, for Group 11, Kansas.

UNITED STATES DEPARTMENT OF THE INTERIOR
BUREAU OF LAND MANAGEMENT
Washington, D. C. June 18, 1957

This plat is strictly conformable to the approved field notes, and the survey, having been correctly executed in accordance with the requirements of law and the regulations of this Bureau, is hereby accepted.

For the Director

Carl G. Harrington
Cadastral Engineering Staff Officer