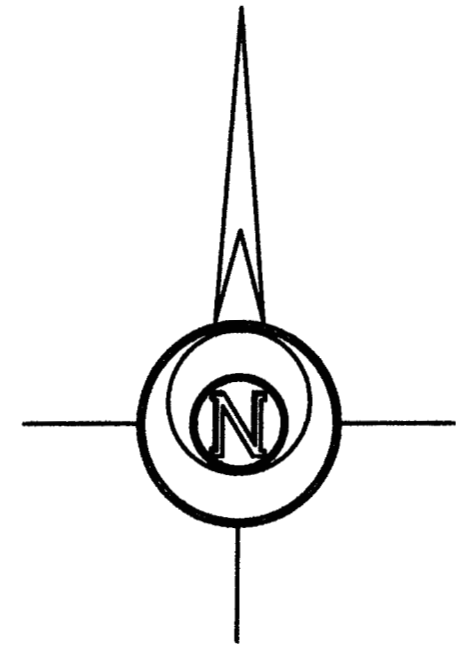
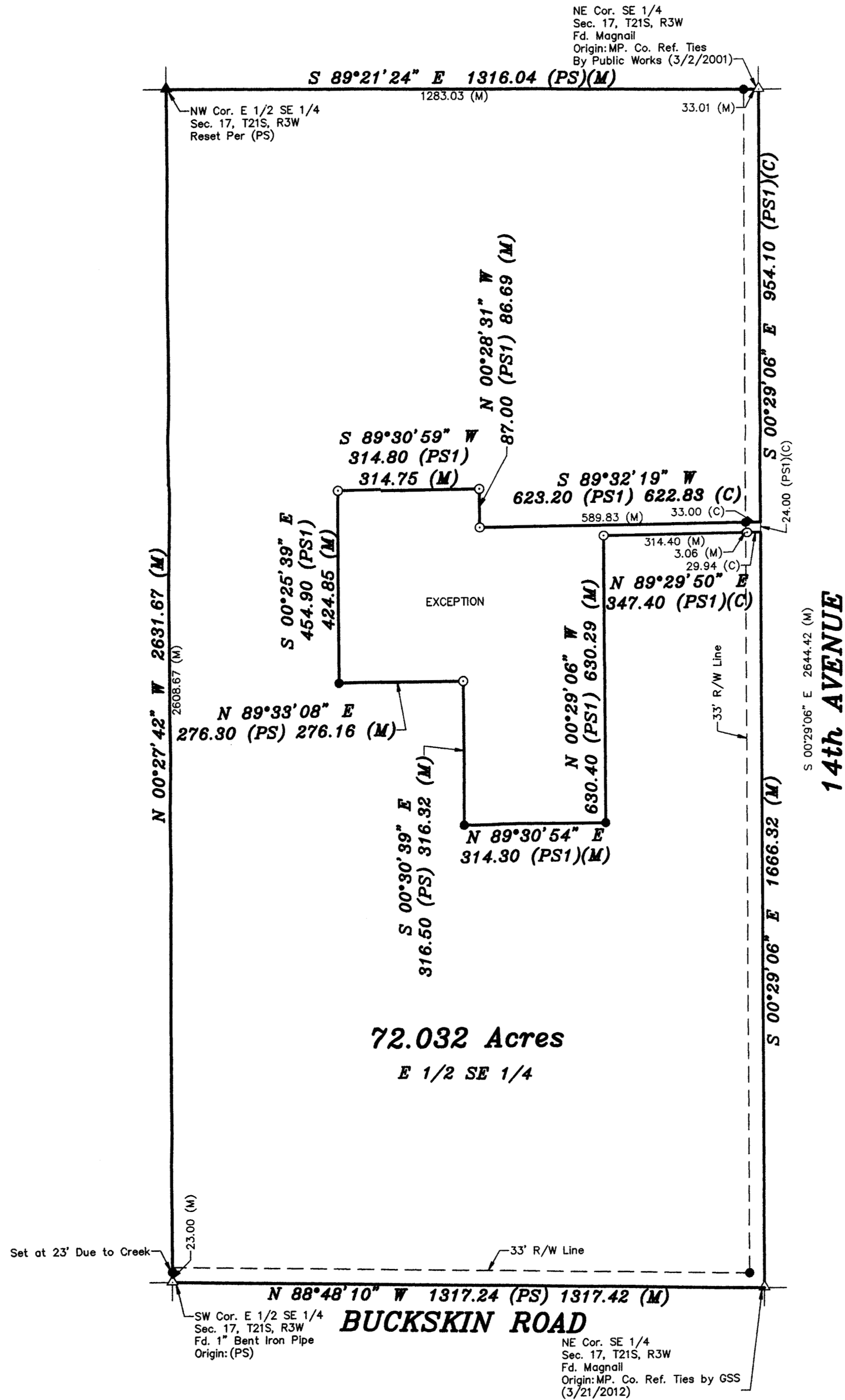


Saved 10/10/2016 9:26:08 AM by KLOUTZEN
Plot Date & Time Monday, October 10, 2016 9:47:03 AM Dwg Path U:\DD\GSSFILES\2016\20160647 C3d\dwg\20160647 Auto S Gnd



BASIS OF BEARING = NAD 83 KANSAS SOUTH ZONE

LEGEND

- △ - Sectional Monument Found
- ▲ - Section Monument Set (5/8" x 24" Iron Rebar w/G.S.S. Cap)
- - Found 3/4" Rebar From (PS)
- - 5/8" x 24" Iron Rebar Set w/G.S.S. Cap
- (C) - Calculated
- (M) - Measured
- (PS) - Previous Survey Francis Rankin: April 7, 1963
- (PS1) - Previous Survey Francis Rankin: June 31, 1973

DESCRIPTION OF RECORD:

The East 1/2 of the Southeast 1/4 of Section 17, Township 21 South, Range 3 West of the 6th P.M., McPherson County, Kansas, LESS A part of the Southeast 1/4 of Section 17, Township 21 South, Range 3 West of the 6th P.M., described as follows: Beginning at a point 954.1 feet South of the Northeast corner of said Southeast 1/4, Section 17, thence West 623.2 feet; thence North 87 feet; thence West 314.8 feet; thence South 424.9 feet; thence East 276.3 feet; thence South 316.5 feet; thence East 314.3 feet; thence North 630.4 feet; thence East 347.4 feet, thence North 24 feet to point of beginning, McPherson County, Kansas.

SURVEYOR'S CERTIFICATE:

I hereby certify this plat to be a true, correct and complete representation of the property described hereon, as surveyed under my supervision, this 10th day of October, 2016.



Prepared For: WIER FARMS, LLC		Description: A PORTION OF THE E 1/2 OF THE SE 1/4 SECTION 17, T21S, R3W McPHERSON COUNTY, KANSAS	
Prepared By: GSS		Garber Surveying Service, P.A.	
HUTCHINSON (Main Office) 2908 North Plum St. 67502 Ph. 620-665-7032 Fax 620-663-7401 McPHERSON (Branch Office) 115 East Marlin 67460 Ph. 620-241-4441 Fax 620-241-4458 NEWTON (Branch Office) 511 North Poplar St. 67114 Ph. 316-283-5053 Fax 316-283-5073			
Drawn By: KLL	Scale: 1"=200'	Date of Field Work: October 3, 2016	Job No:
Checked By: NDS	Date: 10/10/2016	Sheet 1 of 1 Sheet(s)	G2016-647