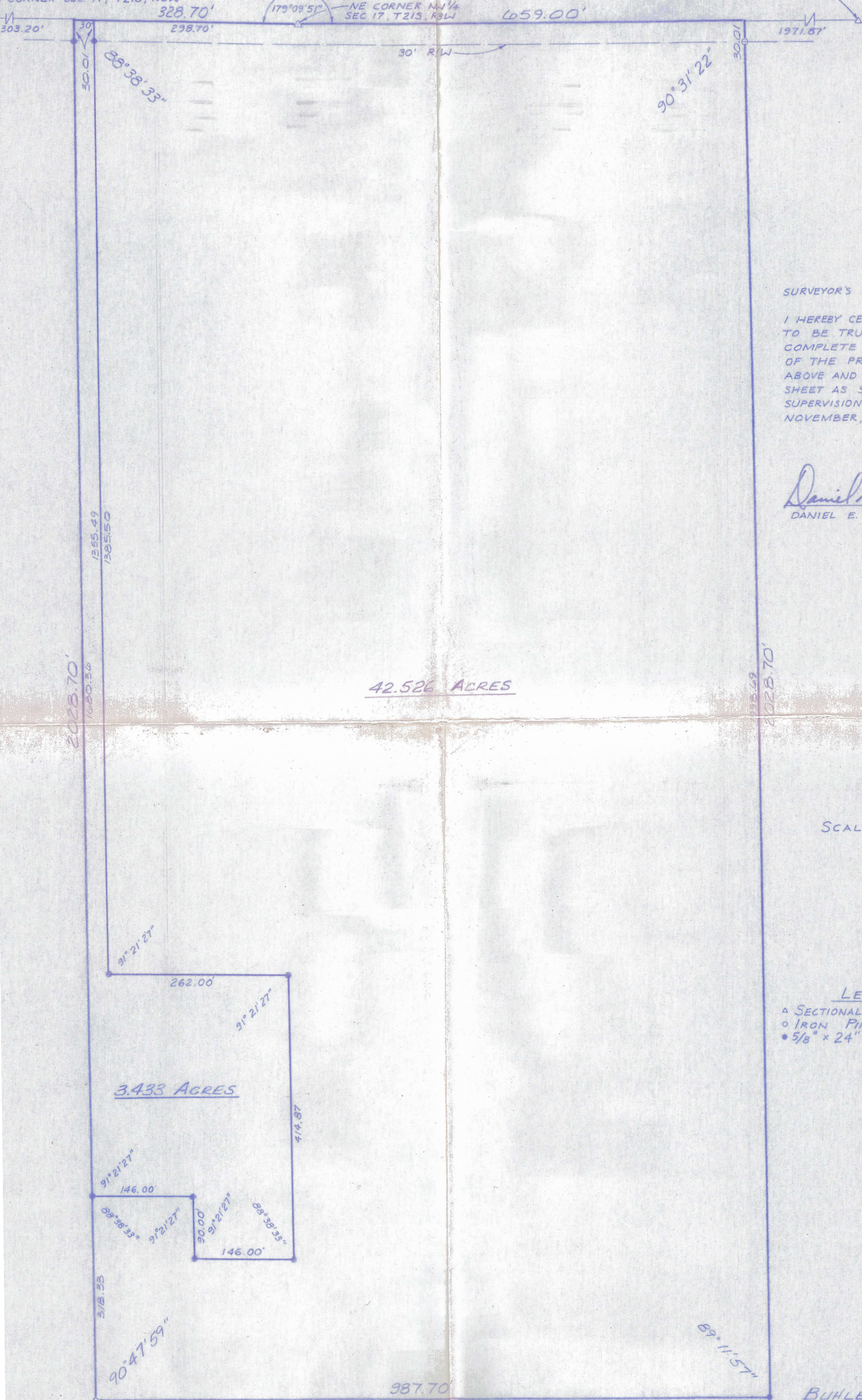


CORNER SEC 17, T21S, R3W

NE CORNER SEC 17, T21S, R3W

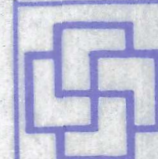


SURVEYOR'S CERTIFICATE:

I HEREBY CERTIFY THIS PLAT TO BE TRUE, CORRECT AND COMPLETE REPRESENTATION OF THE PROPERTY DESCRIBED ABOVE AND ON THE ATTACHED SHEET AS SURVEYED UNDER MY SUPERVISION, THIS 7TH OF NOVEMBER, 1989.

Daniel E. Garber

DANIEL E. GARBER RLS # 683



**Garber
Surveying Service, P.A.**

217 East 1st, Suite 16 Hutchinson, KS 67501 316-665-7032

Drawn: DM	Chkd: DES	Proj. No.
Scale: 1"=100'	Date: 11-14-1989	689-686